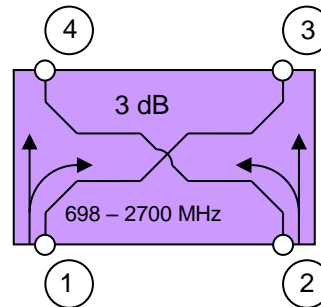


3 dB Coupler (X-Style)



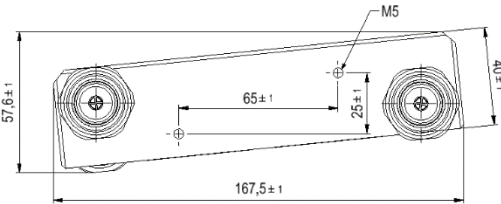
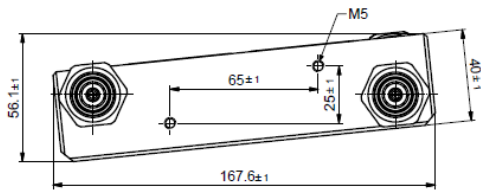
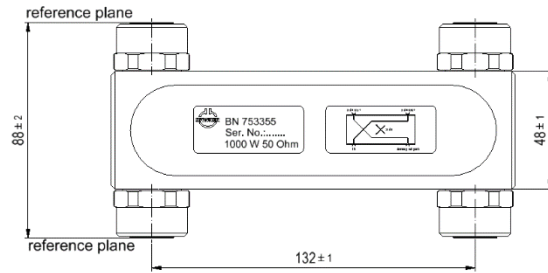
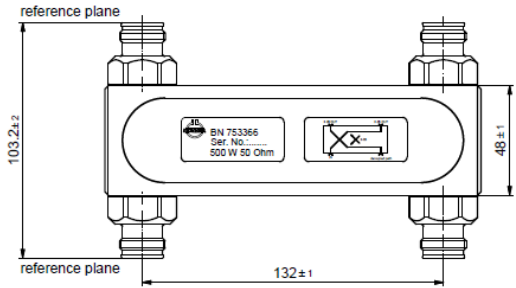
not binding



Block Diagram

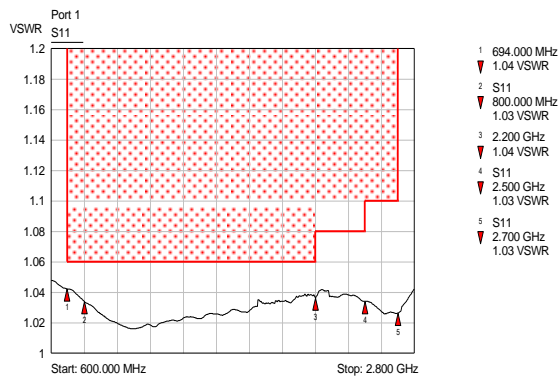
Part number	BN 753366	BN 753355
Connectors	4.3-10 socket (50 Ohms)	7-16 socket (50 Ohms)
Frequency range	694 - 2700 MHz	
Coupling attenuation	694 – 800 MHz 3 dB +/- 0.5 dB 800 – 2700 MHz 3 dB +/- 0.4 dB	
Isolation	694 – 2200 MHz ≥ 33 dB typical ≥ 35 dB 2200 – 2500 MHz ≥ 31 dB typical ≥ 33 dB 2500 – 2700 MHz ≥ 28 dB typical ≥ 31 dB	
VSWR	694 – 2200 MHz ≤ 1.06 typical ≤ 1.04 2200 – 2500 MHz ≤ 1.08 typical ≤ 1.06 2500 – 2700 MHz ≤ 1.10 typical ≤ 1.08	
Test voltage	500 V	
Power rating	max. 500 W	max. 1000 W
IM – value 3rd order at 2 x 20 W	≤ -160 dBc typical: ≤ -165 dBc	
Special feature	DC path Port 1 → Port 3 and Port 2 → Port 4 (max. 6.5 A AISG conform)	
Degree of protection mated / 1bar, 1h, ≤18°C	IP 68	
Environmental conditions	ETSI EN 300019-1-1 Class 1.2 ETSI EN 300019-1-2 Class 2.3 ETSI EN 300019-1-4 Class 4.1E	
Wall / Mast mounting	to be ordered separately under BN B13702	
Weight	0.9 kg	
Temperature range	-40 – +70 °C	

Dimensions:

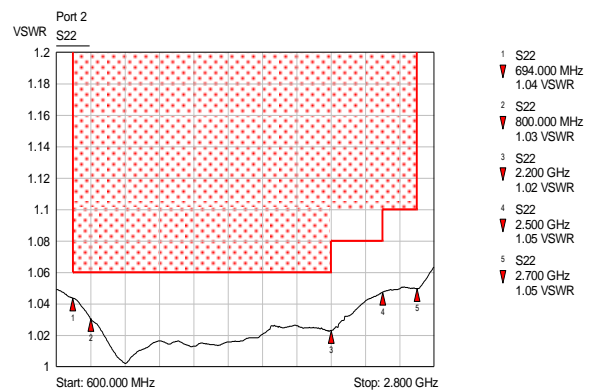


Measurements:

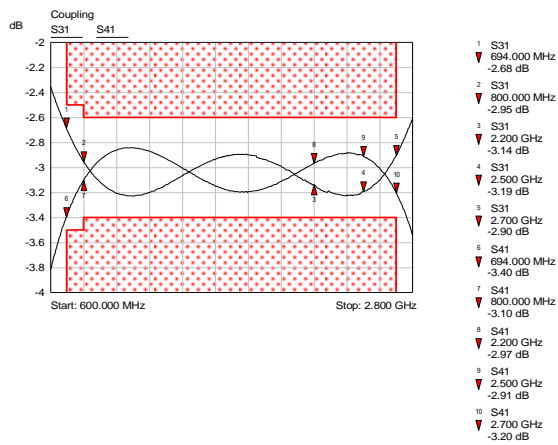
VSWR:



VSWR:



Coupling attenuation:



Isolation:

