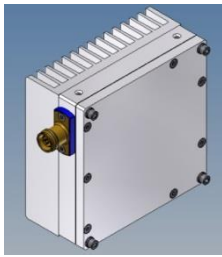


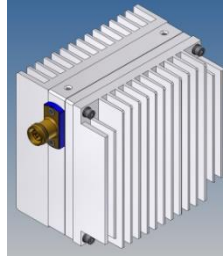
Coaxial Load 20W / 50W / 100W / 150W low IM



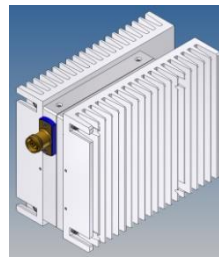
20W Load



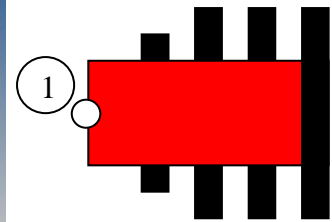
50W Load



100W Load



150W Load



block diagram

Electrical characteristics

Part number	BN 594282	BN 594283	BN 594284	BN 594285
Frequency range	130-3800 MHz (6000 MHz on request)			
Intermodulation products: 3rd order @ 2 x 20 W	≤ -120 dBc (typ. ≤ -125 dBc) @ 130 - 350 MHz ≤ -140 dBc (typ. ≤ -145 dBc) @ 350 - 694 MHz ≤ -150 dBc (typ. ≤ -155 dBc) @ 694 - 870 MHz ≤ -160 dBc (typ. ≤ -165 dBc) @ 870 - 3800MHz			
VSWR	≤ 1.15; typ. ≤ 1.08 @ 130 - 3000MHz ≤ 1.2; typ. ≤ 1.15 @ 3000 - 3800MHz			
Power Rating	≤20W	≤50W	≤100W	≤150W
Ambient temperature range	-40 ... +50 °C (full power rating) +50...+85 °C (limited power rating, see derating curve)			

Mechanical characteristics

Connectors	4.3-10 socket (50 Ohms)			
Dimensions, approx. (Excluding brackets and connectors)	See drawing			
Weight, approx.	1.2 kg	2.5 kg	3.5 kg	5.2 kg
Wall / Mast mounting	to be ordered separately under BN B20962 or B20963			

Environmental conditions

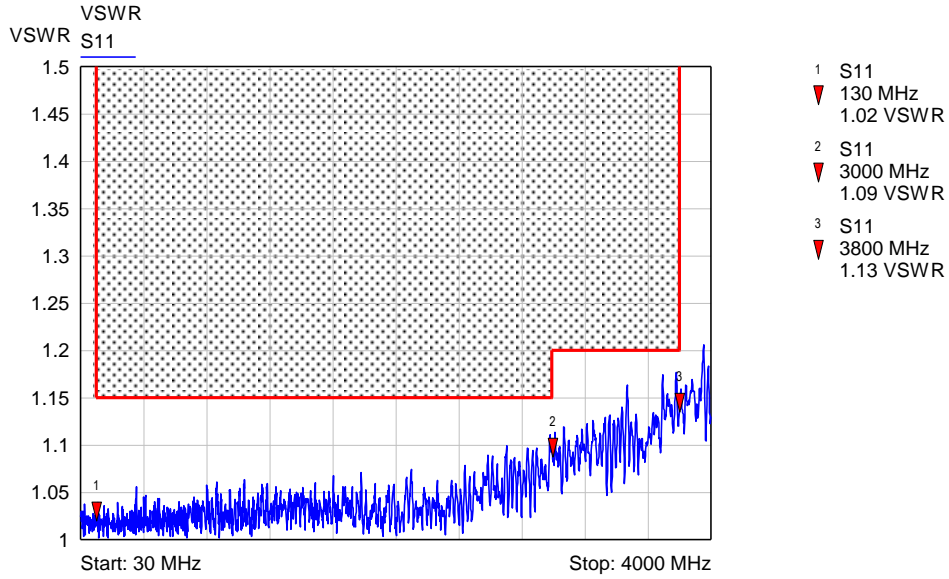
Class. of environmental conditions:	ETSI EN 300019-1-1 Class 1.2 ETSI EN 300019-1-2 Class 2.3 ETSI EN 300019-1-4 Class 4.1E
Degree of protection	IP 68
Operation Ambient temperature range	-40 °C to +50 °C
Storage Ambient temperature range	-40 °C to +85 °C
Relative humidity, max.	95% (non-condensing)

SPINNER GmbH
 This document is proprietary to us.
 All rights reserved. Any use, transfer, or reproduction of this document
 or the know-how contained therein requires our express consent.

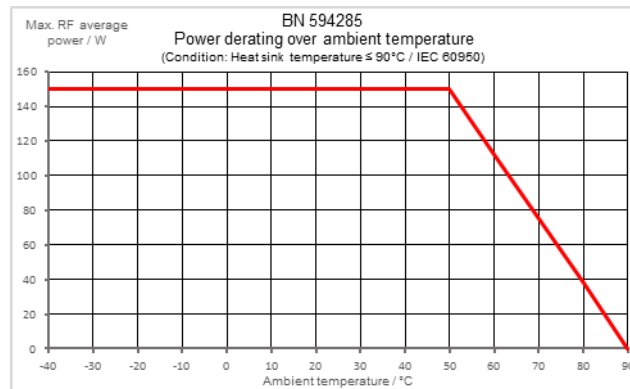
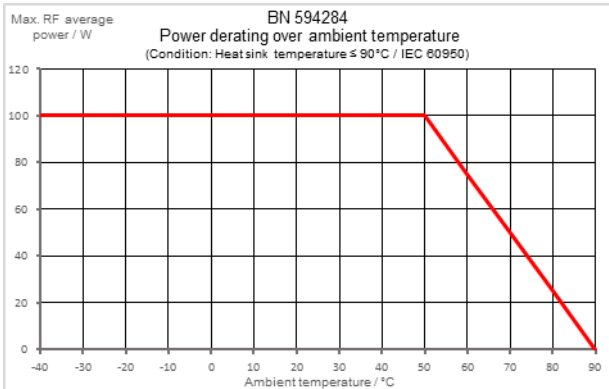
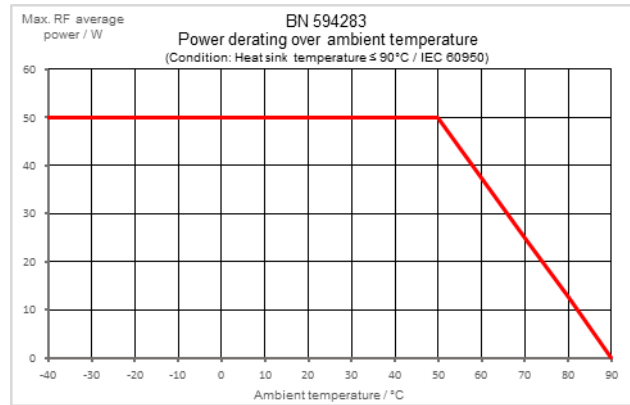
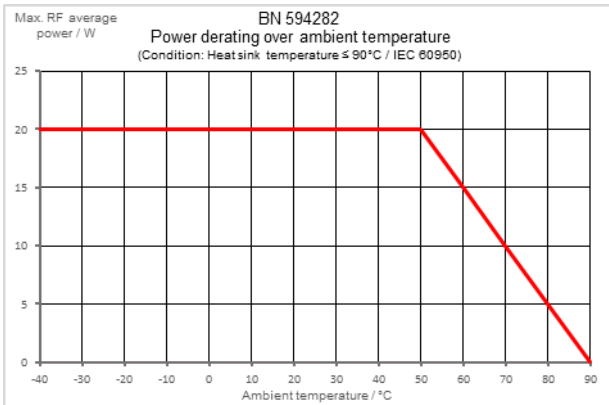
Template TD-00002Y

Coaxial Load 20W / 50W / 100W / 150W low IM

Measurements:



Temperature derating diagram:



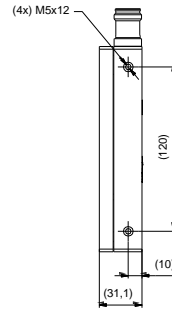
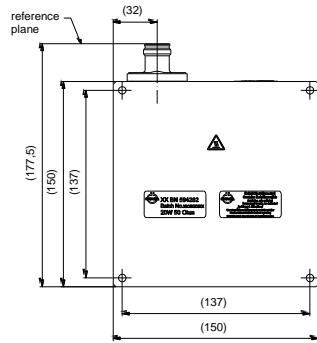
SPINNER GmbH
 This document is proprietary to us.
 All rights reserved. Any use, transfer, or reproduction of this document
 or the know-how contained therein requires our express consent.

Template TD-00002Y

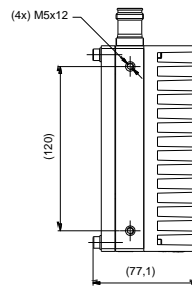
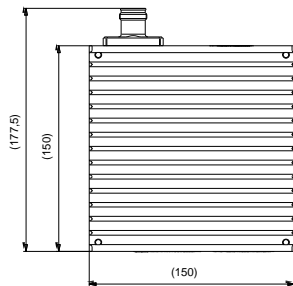
Coaxial Load 20W / 50W / 100W / 150W low IM

Dimension:

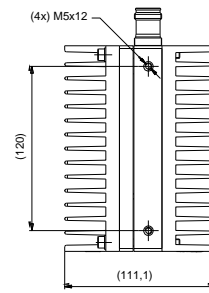
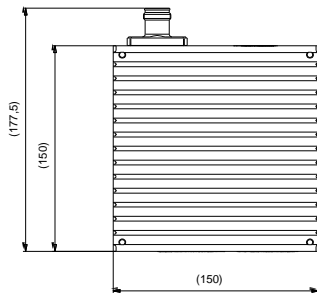
SPINNER GmbH
 This document is proprietary to us.
 All rights reserved. Any use, transfer, or reproduction of this document
 or the know-how contained therein requires our express consent.



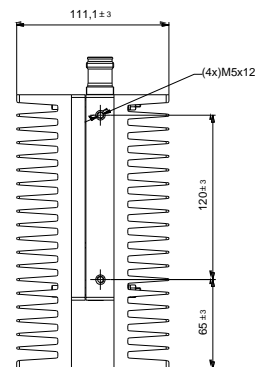
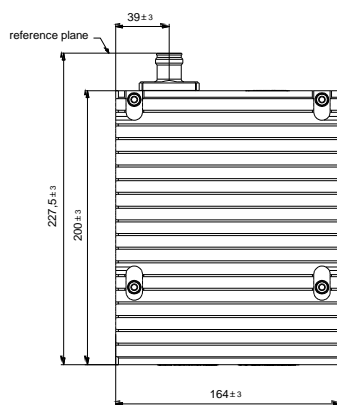
BN 594282



BN 594283



BN 594284



BN 594285

Standard:

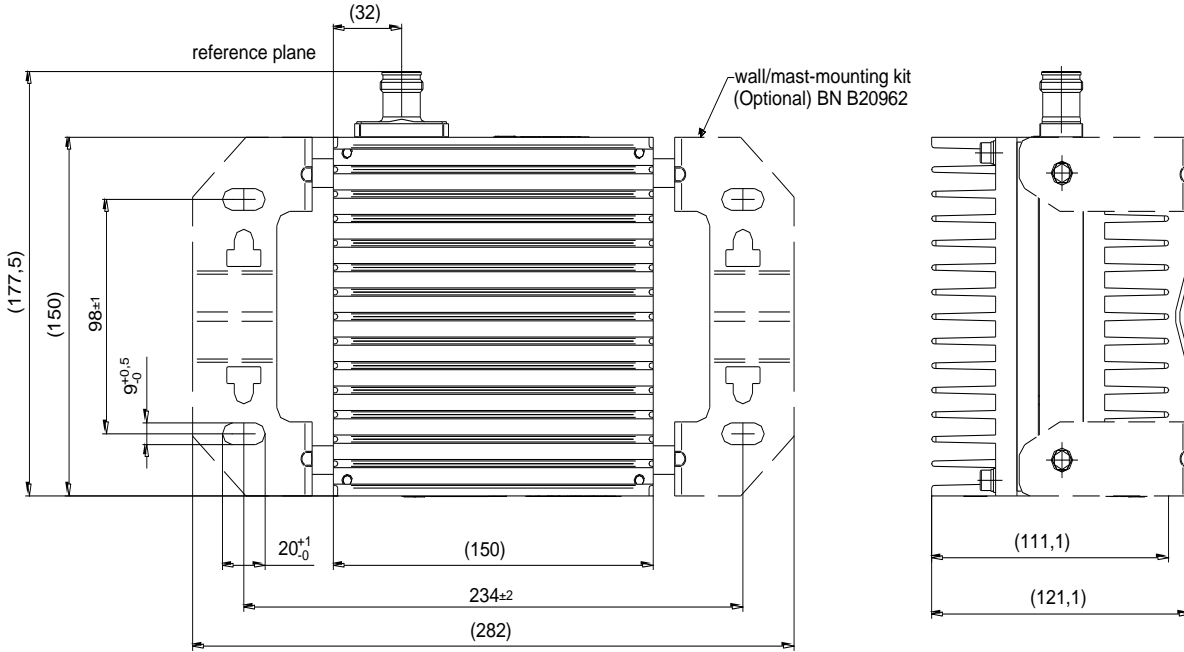
4.3-10 female (50 ohms): IEC 61169-54

modifications reserved!

Template TD-00002Y

Coaxial Load 20W / 50W / 100W / 150W low IM

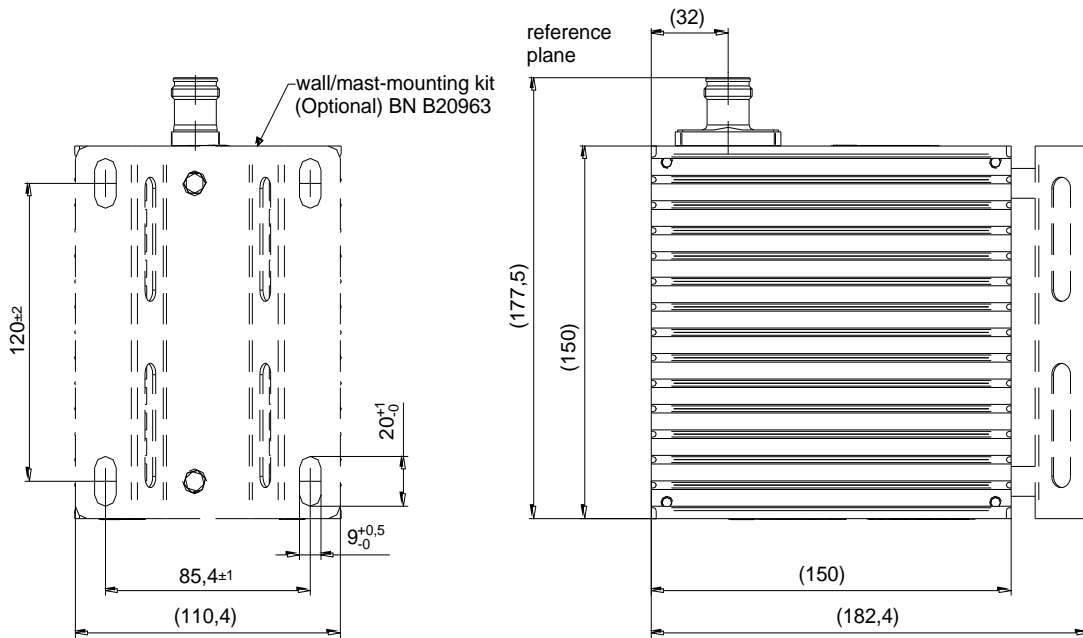
Dimensions with Wall / Mast mounting (example BN 594284):



Standard:
4.3-10 female: 50 (ohms) IEC 61169-54

modifications reserved

SPINNER GmbH
This document is proprietary to us.
All rights reserved. Any use, transfer, or reproduction of this document
or the know-how contained therein requires our express consent.



Standard:
4.3-10 female: 50 (ohms) IEC 61169-54

modifications reserved

Template TD-00002Y