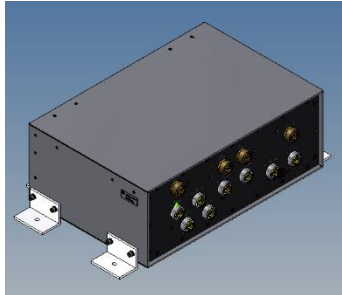
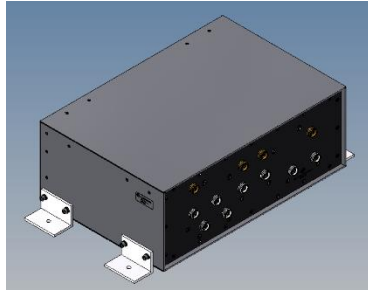


## Multiband Combining System

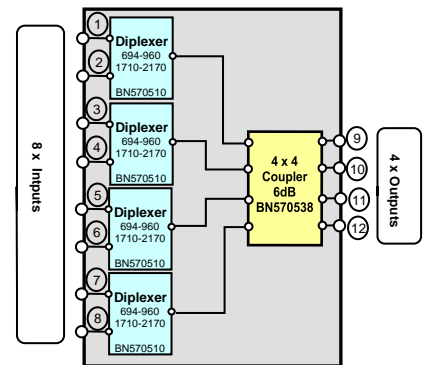
with 4 output ports



BN 570690



BN 572686



block diagram

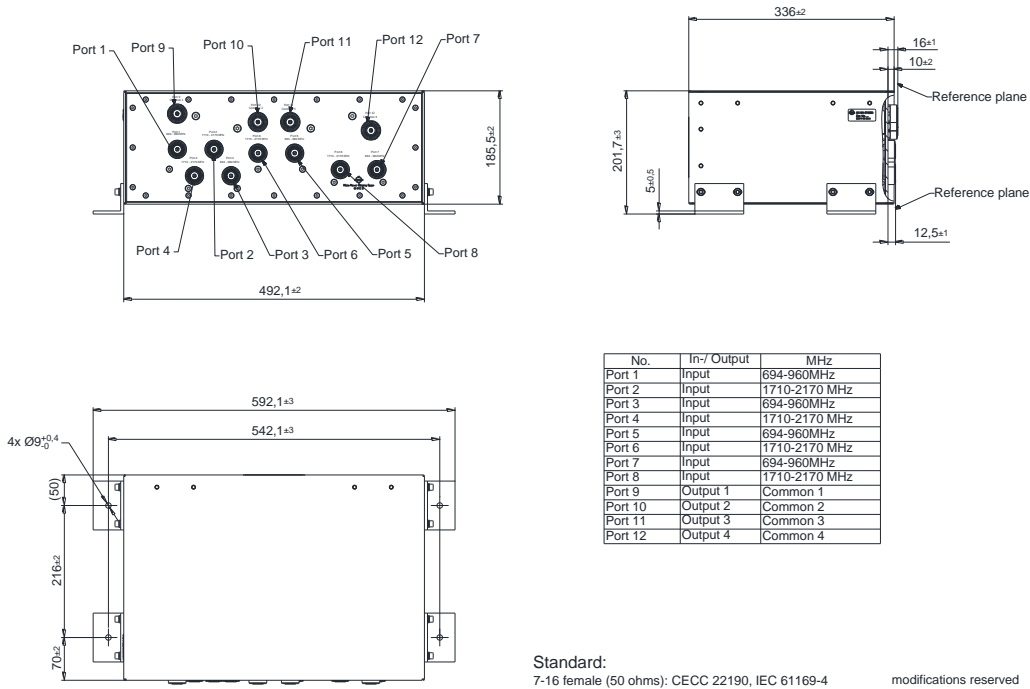
Part number	BN 570690	BN 572686
Input : output	8 : 4	8 : 4
Frequency range Port 1, 3, 5, 7 Port 2, 4, 6, 8	694 - 960 MHz 1710 - 2170 MHz	
Insertion loss(* splitting losses)	≤ 0.35 dB +6.1 dB ± 0.9 dB*	
Isolation Interband Intraband	≥ 50 dB ≥ 30 dB	
IM-value 3rd order @ 2 x 20 W	-155 dBc max. (-160 dBc typ.)	
Impedance	50 Ohms	
Connectors	7-16 female	4.3-10 female
VSWR	≤ 1.25 typ. (1.4 max.)	
Power rating	250 W per input port	
Degree of protection	IP65 (connectors facing downwards)	
Environmental conditions	ETSI EN 300019-1-1 Class 1.2 ETSI EN 300019-1-2 Class 2.3 ETSI EN 300019-1-3 Class 3.3	
Temperature range	-40 °C – +65 °C	
Weight	17 kg	
Mounting	Universal mounting kit included	

\*unused input ports must be terminated with 5W standard load 531712 for 570690 (to be ordered separately).

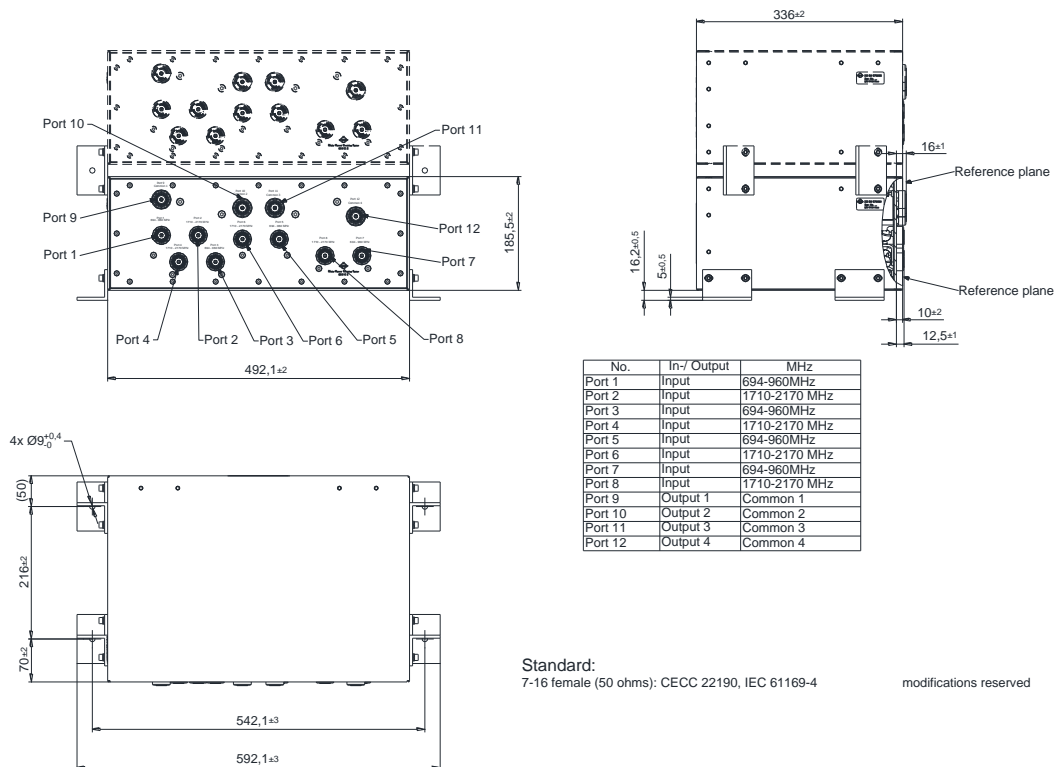
\*unused input ports must be terminated with 5W standard load 531726 for 572686 (to be ordered separately).

Dimensions (three different mounting options of both 7/16 and 4.3/10 connectors):

Option 1: Mounting angles used as feet



Option 2: Connecting two stacked boxes



Option 3: outdoor use (connector downward installation)

