

Installation guide for In-Building panel antennas

1 Introduction and safety advice

This instruction shall provide information how to install the antenna with mounting kits.

All shown tasks are intended to be carried out by qualified personnel only. Safety rules apply (e.g. for working with heavy loads, radio frequency power signals or tools). In order to prevent damage to equipment and humans, make sure that no RF power is present at the combiner during installation.

Please note that satisfactory performance of the system (especially in terms of inter-modulation) can only be achieved if all jumper cables and connectors are handled properly. Please make sure that all connectors are clean and free from metal, dust or dirt. Avoid sharp bends of the connecting jumper cables.

SPINNER does not guarantee for any faults or damage resulting from improper installation.

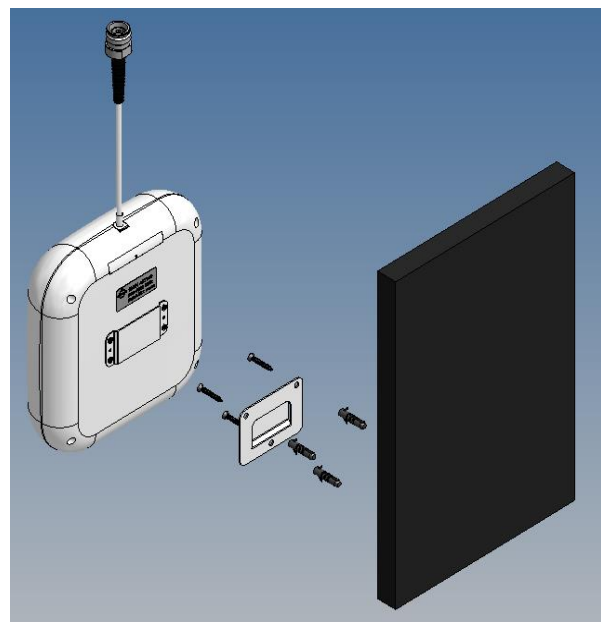
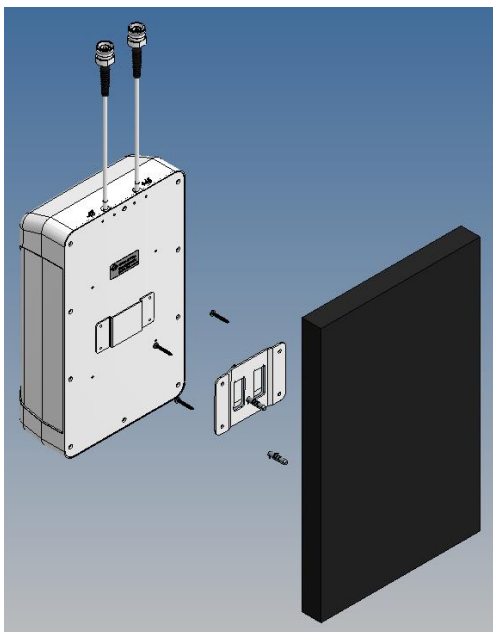
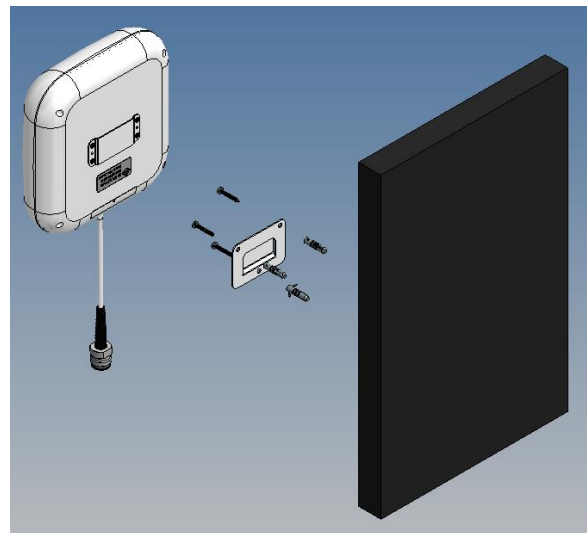
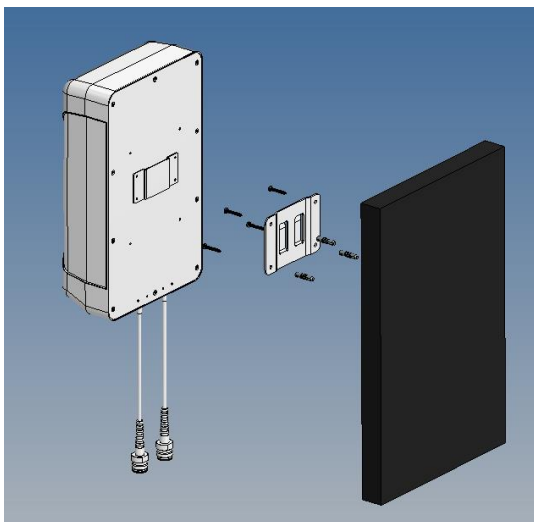
2 Installation

2.1 Install the antenna:

Drill the holes (Ø 6mm) in the wall and put the plastic expansion nails into the wall, lock the mounting plate with these screws (M4*25mm) on the wall. Then hang the antenna back plate onto the wall with mounting plate (see below).

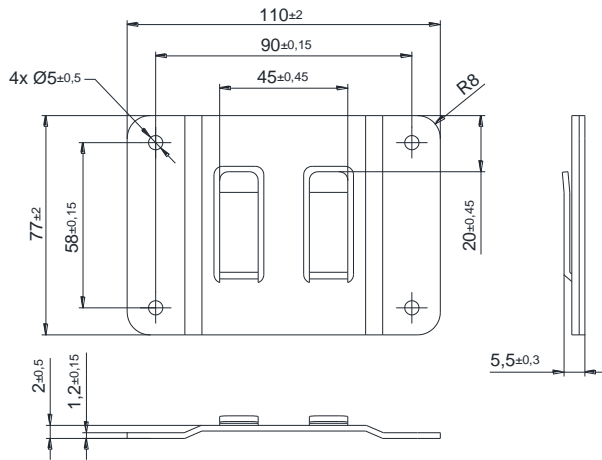
Note: It is also possible to install the antenna “upside down” (180° turned), that the cables exit on top.

The method is applicable for antenna A77136, A77136C0001, A77136C0002, A77138, A77139, A77140, A77149C0001 and A77149C0002.

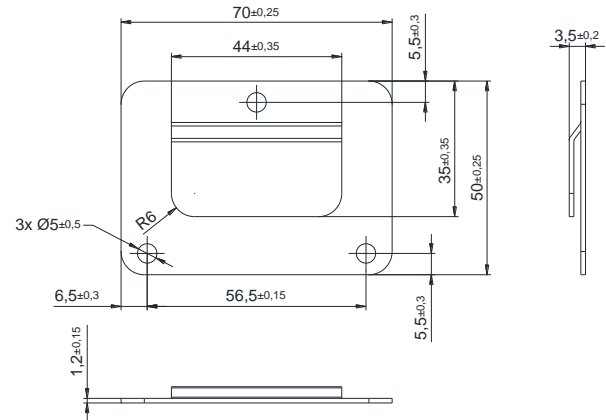


Dimensions of wall mounting plate:

For A77136, A77136C0001, A77136C0002, A77138,
A77139, A77149C0001 and A77149C0002

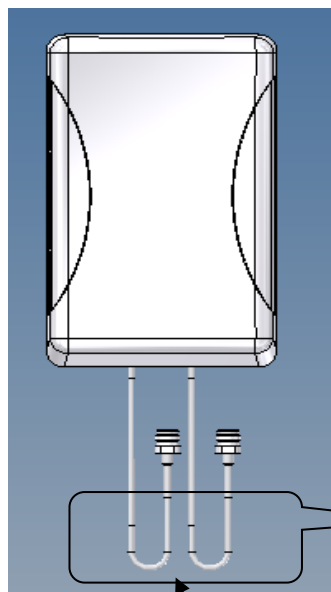


For A77140

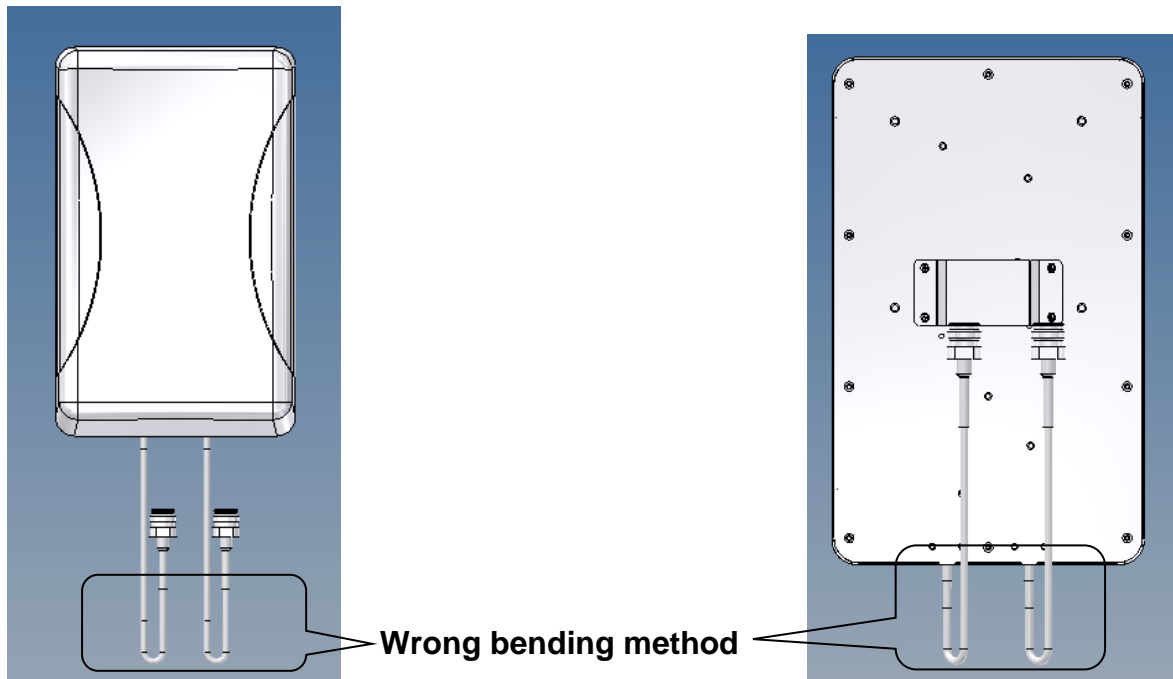


2.2 Warning:

As shown below, the cable of antenna can't be bent 180° and bending diameter can't be < 40mm.



Ø ≥ 40mm



3 Operation

After carrying out all described steps, the antenna is ready for use. Make sure that the specified environmental conditions for operation are not exceeded.