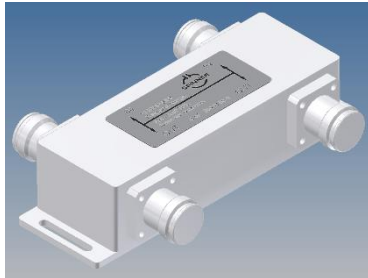
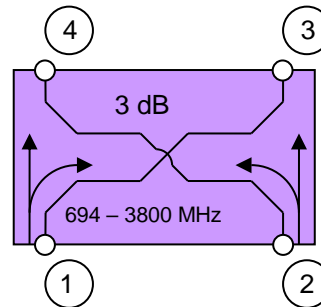


### 3 dB Coupler (X-Style)



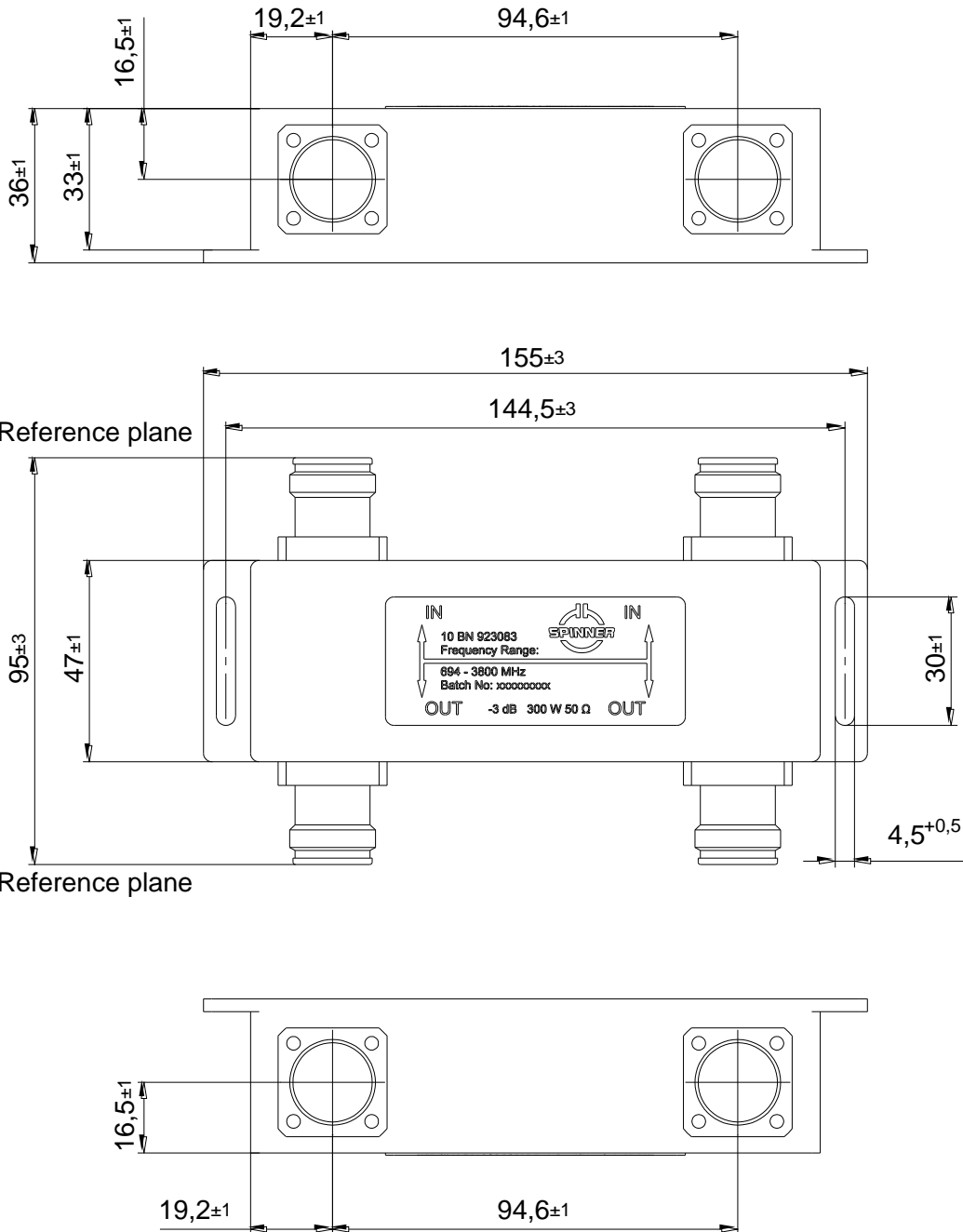
not binding



Block Diagram

Part number	BN 923083
Connectors Port 1; Port 2 Port 3; Port 4	4.3-10 socket (50 Ohms) Input ports Output ports
Frequency range	694 - 3800 MHz
Insertion loss Port 1, 2 → Port 3; Port 1, 2 → Port 4	3 dB +/- 0.6 dB
Isolation	≥ 25 dB
VSWR	≤ 1.25
Power rating	300 W
IM – value 3rd order at 2 x 20 W	≤ -155 dBc
Special feature	DC path Port 1 → Port 3 and Port 2 → Port 4 (max. 6.5 A AISG conform)
Degree of protection	IP 65 (Outdoor)
Environmental conditions	ETSI EN 300019-1-1 Class 1.2 ETSI EN 300019-1-2 Class 2.3 ETSI EN 300019-1-4 Class 4.1E
Wall / Mast mounting	integrated
Weight	0.8 kg
Paint color	Grey
Temperature range	-40 – +65 °C
Dimensions (w x h x d)	See drawing

Dimensions:



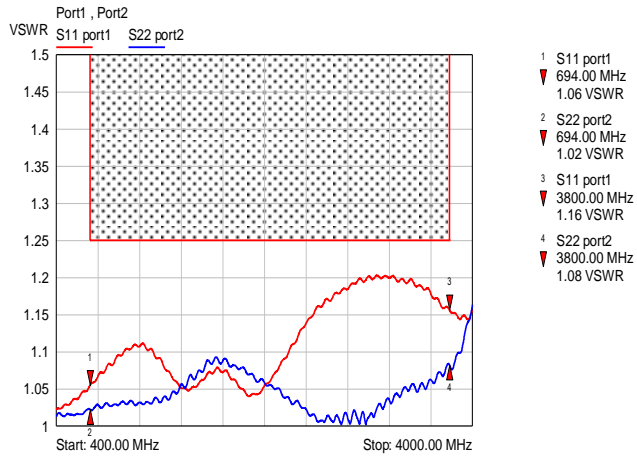
**Standard:**

4,3-10 female (50 ohms): IEC 61169-54

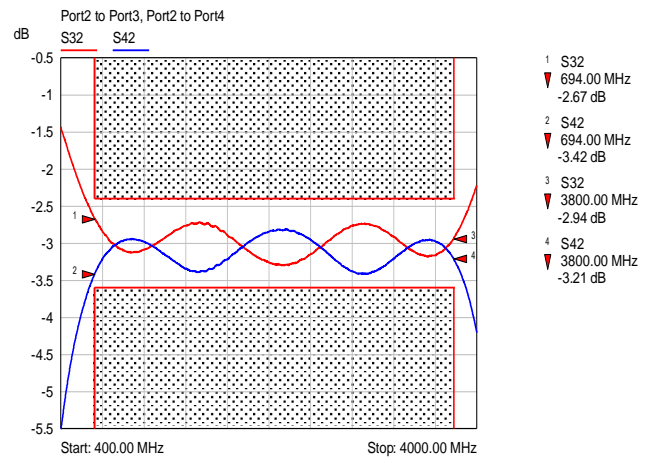
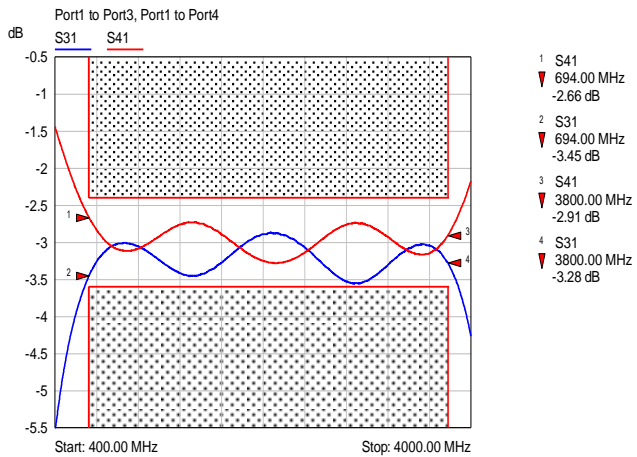
modifications reserved

**Measurement:**

**VSWR:**



**Insertion loss:**



**Isolation:**

