

**Surge Protector 7-16 female-female  
with Quarter Wavelength Stub and DC Break**

**Connectors:**

Unprotected port (antenna) 7-16 socket bulkhead (50Ω)  
Protected port (transceiver) 7-16 socket bulkhead (50Ω)

**Frequency range / VSWR:**

850 to 2450 MHz /  $\leq 1.11$   
800 to 2500 MHz /  $\leq 1.14$   
698 to 2700 MHz /  $\leq 1.35$

**Intermodulation products:**

$\leq -165$  dBc  
3<sup>rd</sup> order @ 2 x 20 W

**Insertion loss:**

$\leq 0.1$  dB

**Max. average RF power:**

(for VSWR = 1; sea level and 40°C) 3.0 kW at 800 MHz  
1.7 kW at 2500 MHz

**Peak power:**

370 kW

**Peak voltage:**

4.3 kV

**Nominal surge current:**

100 kA (test pulse 8/20 μs)  
50 kA (test pulse 10/350 μs)

**Residual pulse voltage:**

< 15 mV (test pulse 4kV 1.2/50μs and 2kA 8/20μs)

**Residual pulse energy:**

< 30 nJ (test pulse 4kV 1.2/50μs and 2kA 8/20μs)

**Material and surfaces:**

Inner conductor CuBe age hardened / silver plated and brass / silver plated  
Outer conductor brass / silver plated  
Other metal parts brass / bright nickel plated  
Insulation PTFE  
Sealing silicone rubber

**Degree of protection:**

IP 67 (in mated condition)

**Operating temperature:**

-40 °C to +85 °C

**Weight:**

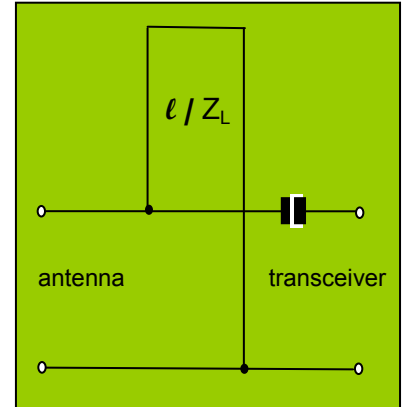
approx. 430 g

**Standards:**

CECC 22190; IEC 60169-4

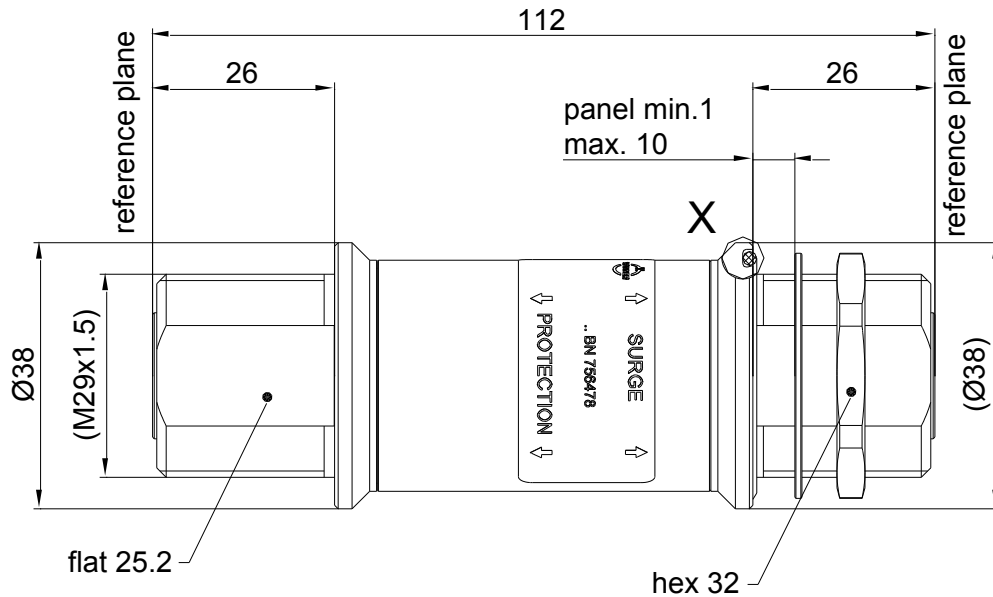
**Appendix:**

Dimensions

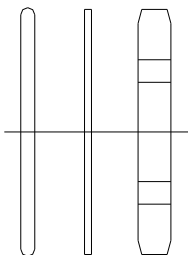


Block diagram

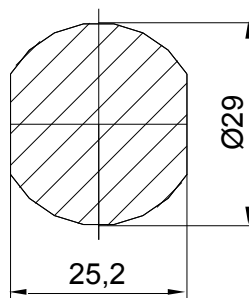
Dimensions:



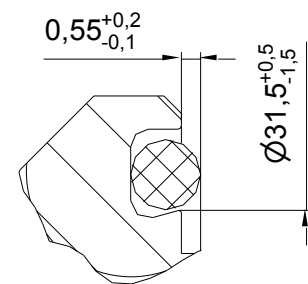
added separately



cross section



X ( 5 : 1 )



(dimension in mm)

modifications reserved