

Coaxial Two Way Switch (DPDT) | BN 754066C0001



Typical illustration

Radio frequency characteristics

Interface type (4 connections)	N female (50 Ω) according to IEC 61169-16			
Characteristic impedance	50 Ω			
Frequency range	0 to 1 GHz	1 to 2 GHz	2 to 3 GHz	3 to 5 GHz
VSWR, max.	1.03	1.13	1.13	1.22
Isolation, min.	75 dB	60 dB	60 dB	50 dB
Insertion loss, max.	0.04 dB	0.04 dB	0.06 dB	0.06 dB
Average power capability ^{RFC1)} at ambient temperature -10 to +45°C	790 W	560 W	450 W	350 W
Peak voltage capability ^{RFC1)}	3.0 kV			

*RFC1) Standard conditions: - Dielectric: Dry air under standard pressure at sea level (p = 1013 hPa)
- Load VSWR, max. 1.0 (no standing wave)
- No modulation, sinusoidal carrier only*

Electrical and mechanical characteristics

Switch type	Two way switch, DPDT	
Actuator type	Solenoid drive, latching, self cutoff	
Connector 1 ^{EMC1)} for operating voltage, control, interlock contacts and signaling	25 pole connector according to DIN 41652 / IEC 807-2	
Operating	Operating voltage	12 V DC ±10%
	Operating current, typ. ^{EMC2)}	2 A
	Standby current, max. ^{EMC2)}	25 mA
	Nominal fuse	The switch must be secured externally by a time-delay fuse, 2 A
Control	Control voltage	U In LOW = 0 to 4 V DC / -0.7 mA (0 - active) U In HIGH = 8 to 32 V DC
	Current limiting	The circuit must be limited externally to 0.5 A
Signal contacts Interlock contacts	Lead time typ. ^{EMC2)} (only interlock contacts)	4 ms (the interlock contacts open 4 ms before and close 1.5 ms after switching of the RF contacts)
	Maximum ratings	ES1 circuits according to EN 62368-1, 42.4 V ACpk / 60 V DC / 0.5 A
	Current limiting	The circuit must be limited externally to 0.5 A
Switching time, typ. ^{EMC2)}	100 ms	
Command hold time, min.	100 ms (during this time, the voltage at control input must not change)	
Switching frequency, max.	30 operations per minute	

SPINNER GmbH
This document is proprietary to us.
All rights reserved. Any use, transfer, or reproduction of this document
or the know-how contained therein requires our express consent.

Template 10014442.dotx



Coaxial Two Way Switch (DPDT) | BN 754066C0001

Lifetime, min.	500,000 operations
Weight, approx.	0.8 kg

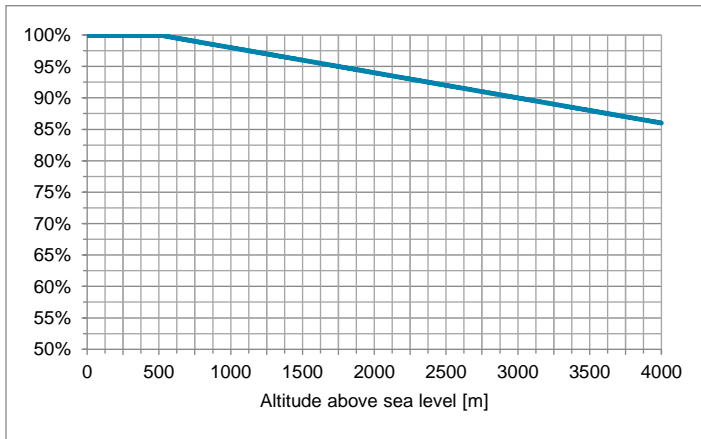
EMC1) Suitable mating connector included
 EMC2) At room temperature and nominal voltage 12 V DC

Environmental conditions

Operational conditions	ETSI EN 300 019-1-3 V2.3.2 (2009-1) class 3.1 N
Ambient temperature ^{EC1)}	-10 to +60°C
Condensation	Not allowed
Relative humidity, max.	95%

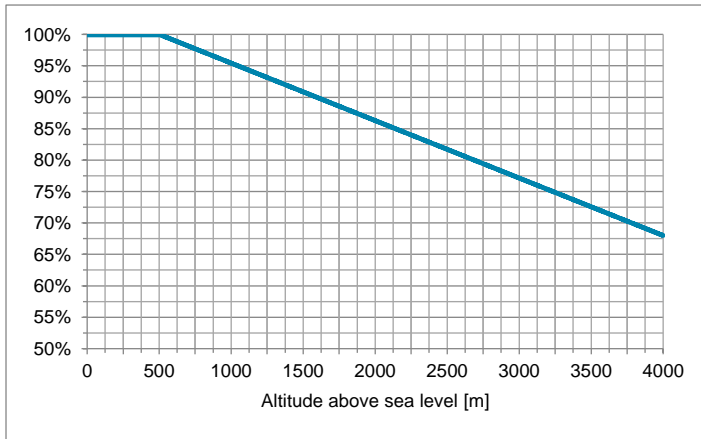
The maximum input power can be applied up to 500 m or 1600 ft above sea level unless noted otherwise in the data sheet. Above this height the maximum input power must be reduced as shown in the diagram.

Derating of input power with increasing altitude



The maximum voltage can be applied up to 500 m or 1600 ft above sea level unless noted otherwise in the data sheet. Above this height the voltage must be reduced as shown in the diagram.

Derating of voltage with increasing altitude



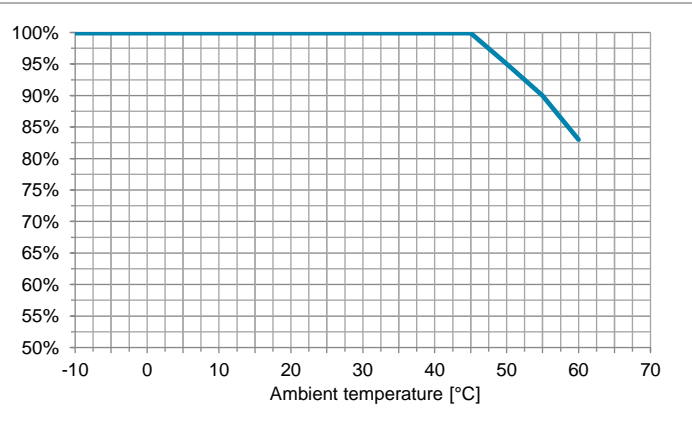
SPINNER GmbH
 This document is proprietary to us.
 All rights reserved. Any use, transfer, or reproduction of this document
 or the know-how contained therein requires our express consent.

Template 10014442.dotx

Coaxial Two Way Switch (DPDT) | BN 754066C0001

Derating of input power with increasing ambient temperature

The maximum input power can be applied up to +45°C ambient temperature unless noted otherwise in the data sheet. Above this ambient temperature the maximum input power must be reduced as shown in the diagram.



Max. altitude above sea level	4,000 m or 13,120 ft according to IEC EN 60664-1
Protection class	III according to IEC EN 61140
IP protection level	IP40 according to IEC EN 60529 (all interfaces terminated)
Installation position	Any
Transport conditions	ETSI EN 300 019-1-2 V2.1.4 (2003-04) class 2.2
Ambient temperature	-25 to +70°C
Rain, condensation, icing	Not allowed
Storage conditions	ETSI EN 300 019-1-1 V2.1.4 (2003-04) class 1.2
Ambient temperature	-10 to +60°C
Rain, condensation, icing	Not allowed

EC1) Extended temperature range on request

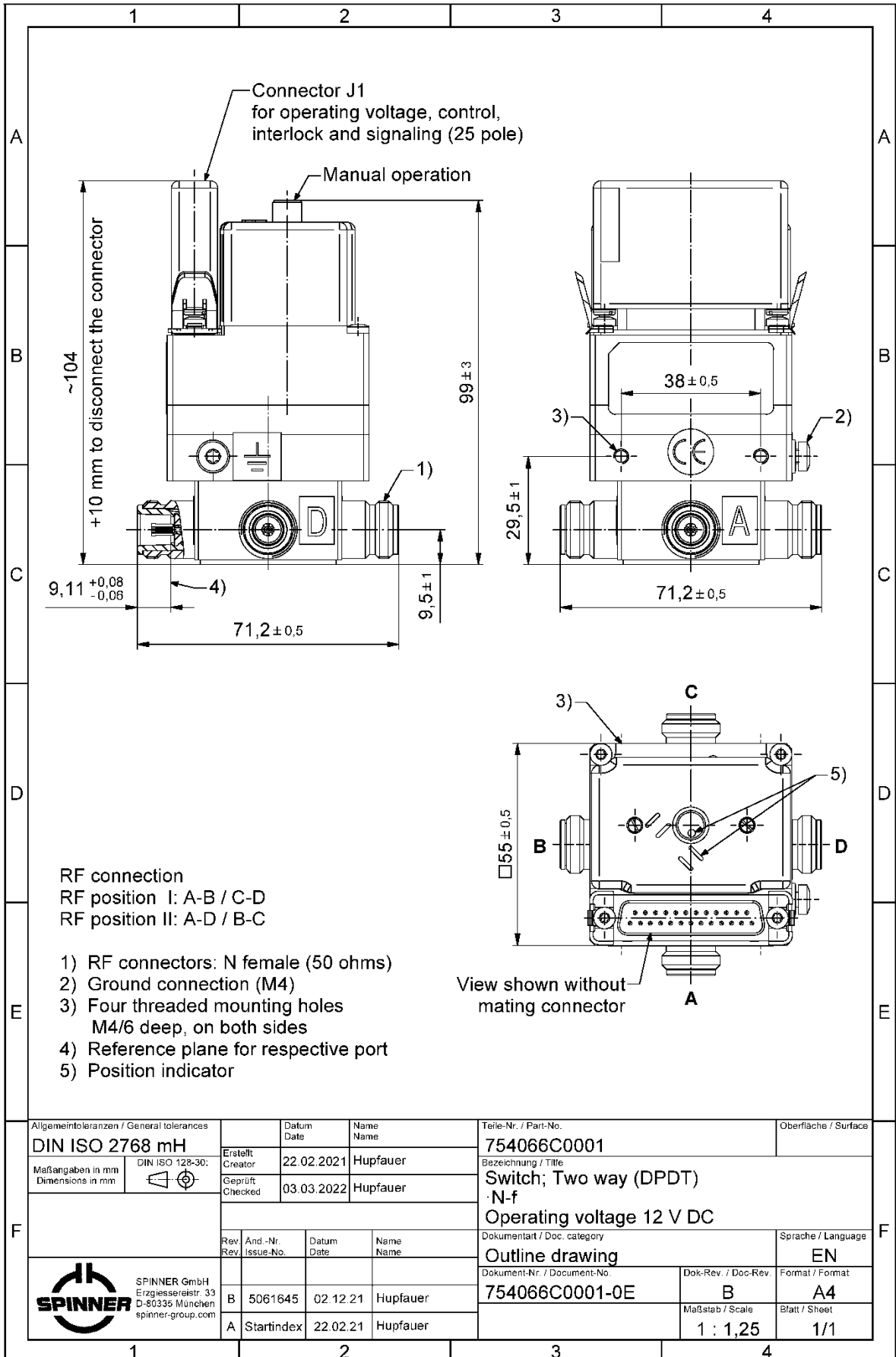
Applicable documents

Product manual	M36318
----------------	--------

Coaxial Two Way Switch (DPDT) | BN 754066C0001

Outline (all dimensions in millimeter)

SPINNER GmbH 2022, alle Rechte vorbehalten.
Schutzvermerk ISO 15016 beachten.
SPINNER GmbH 2022, all rights reserved.
Refer to protection notice ISO 15016.



SPINNER GmbH
This document is proprietary to us.
All rights reserved. Any use, transfer, or reproduction of this document
or the know-how contained therein requires our express consent.

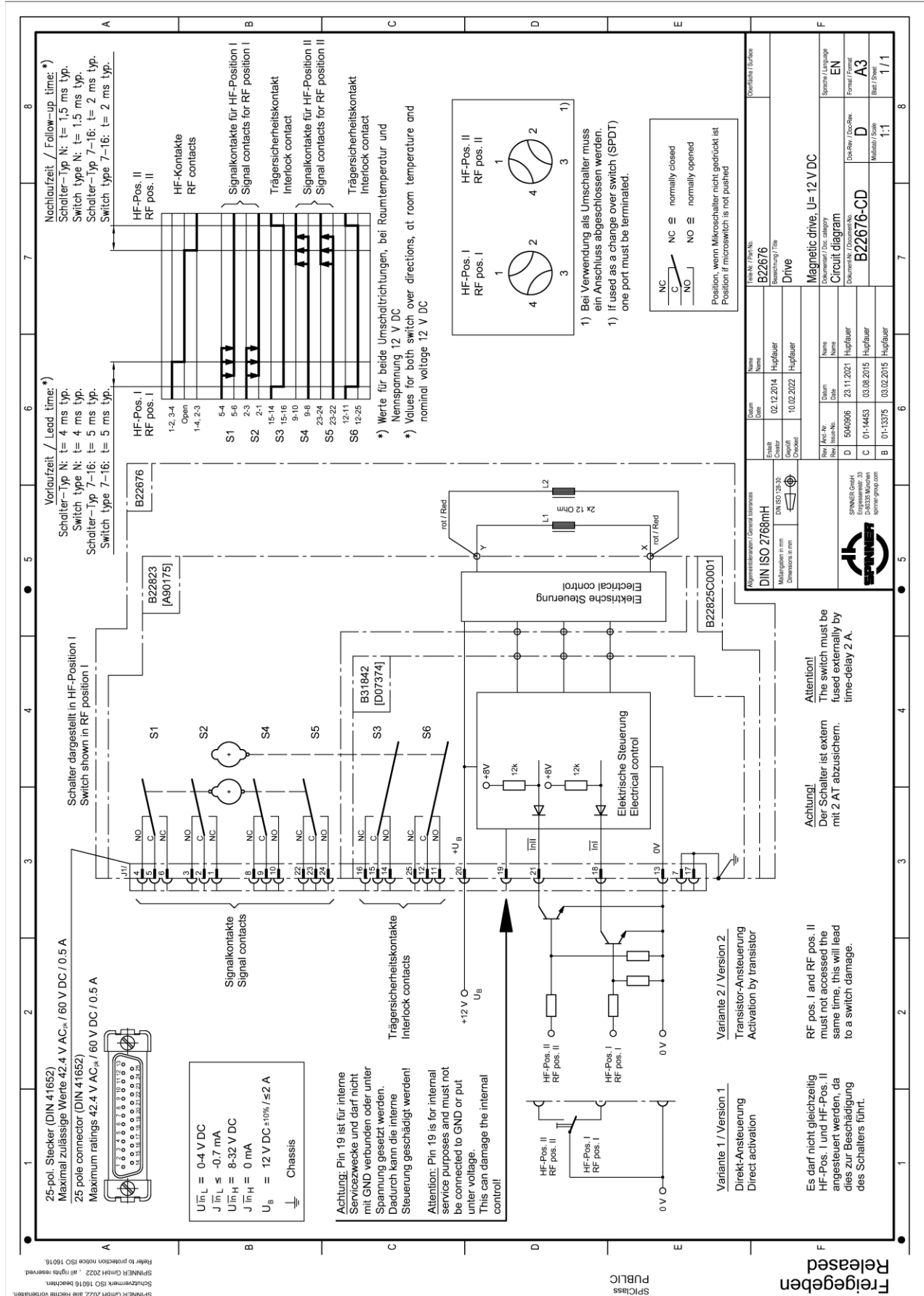
SPIClass
PUBLIC

Freigegeben
Released

Template 10014442.dwt

Coaxial Two Way Switch (DPDT) | BN 754066C0001

Circuit diagram



SPINNER GmbH 2022. Alle Rechte vorbehalten.
 Schutzhinweis ISO 15016 beachten.
 SPINNER GmbH 2022. All rights reserved.
 Refer to protection notice ISO 15016.

Freigegeben
 SPIClass
 PUBLIC