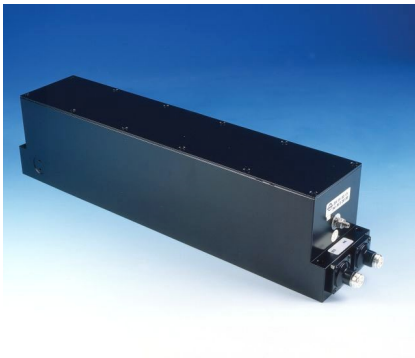
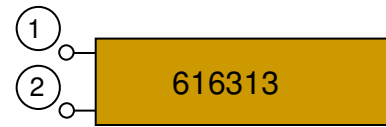


Bandstop Filter for GSM-R



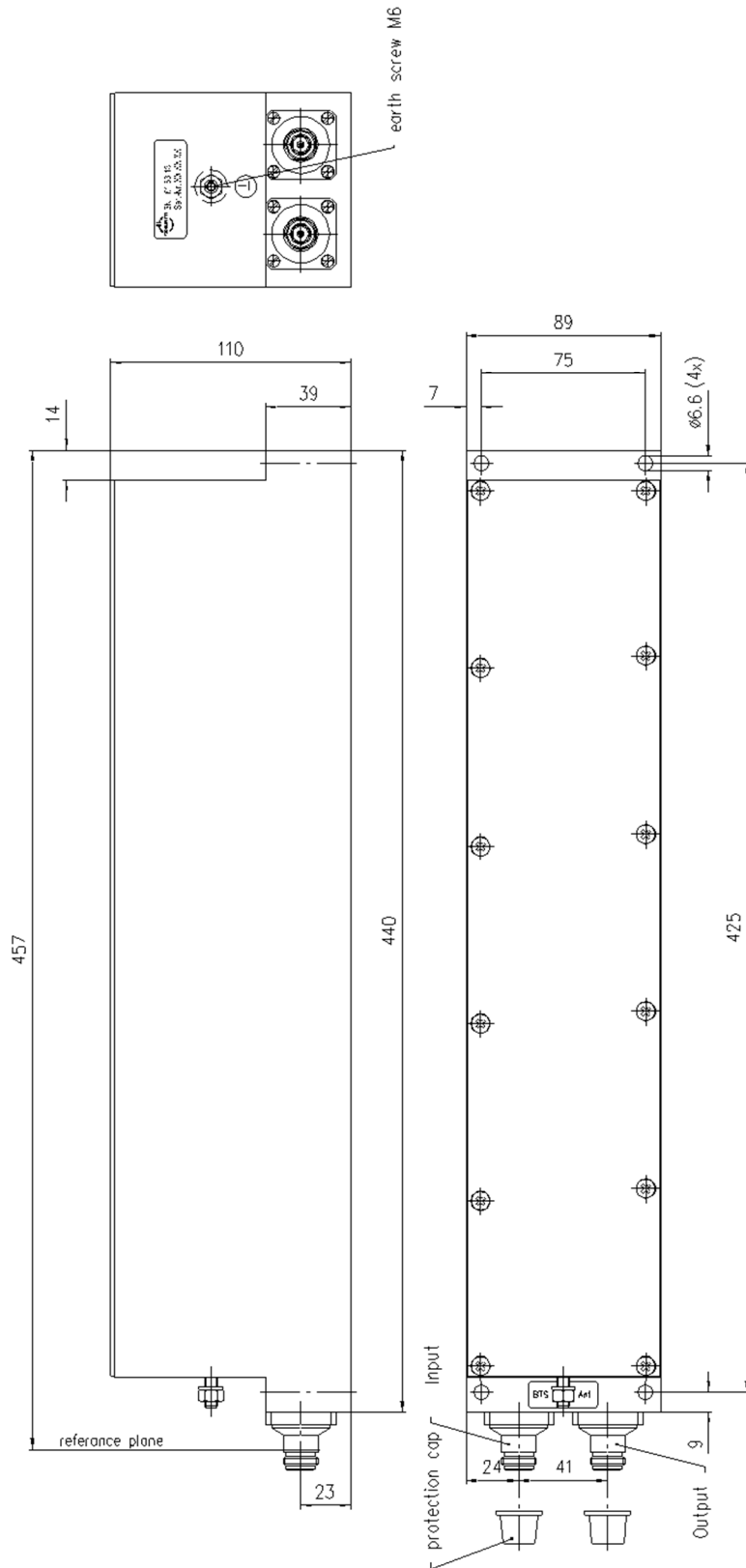
not binding



block diagram

Part number	BN 616313	
Connectors	N socket (50 Ohms)	
Frequency range		
Passband	890 – 915/935 – 960 MHz 1710 – 1880/1920 – 2170 MHz	
Stopband	876– 880/921 – 925 MHz	
Insertion loss		
Passband	890 – 915 MHz	≤ 0.7 dB
	935 – 960 MHz	≤ 0.4 dB
	1710 – 1880 MHz	≤ 0.2 dB
	1920 – 2170 MHz	≤ 0.2 dB
Stopband	876– 880 MHz	≥ 54 dB
	921 – 925 MHz	≥ 50 dB
VSWR	≤ 1.29	
Test voltage	500 V	
Power rating	200 W	
Special feature	DC pass (max. 1 A) Suitable for railway application	
IM – value 3rd order @ 2 x 20 W	≤ -150 dBc typical: ≤ -160 dBc	
Degree of protection	IP 65	
Environmental conditions	ETSI EN 300019-1-1 Class 1.2 ETSI EN 300019-1-2 Class 2.3 ETSI EN 300019-1-4 Class 4.1E	
Weight	6.5 kg	
Wall / Mast mounting	not possible	
Temperature range	-40 °C – +85 °C	

Dimensions:



Measurements:

