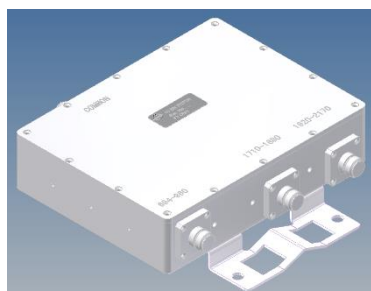
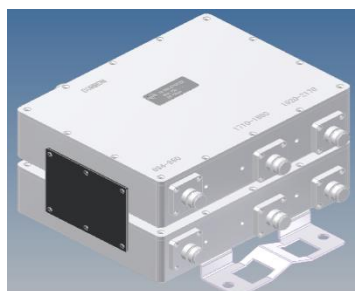


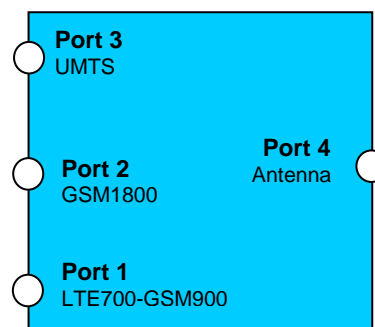
Triplexer LTE700-GSM900 / GSM1800 / UMTS



Single Unit



Double Unit



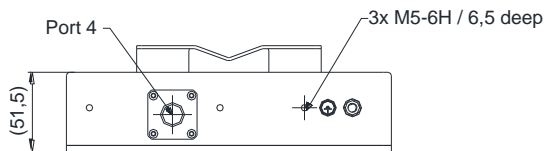
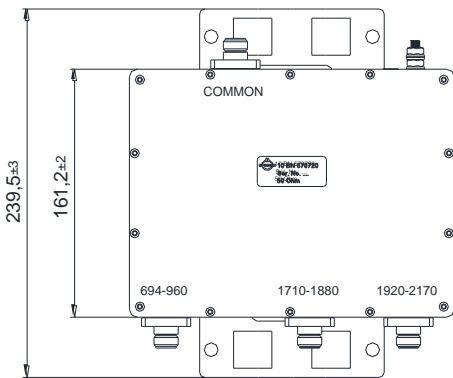
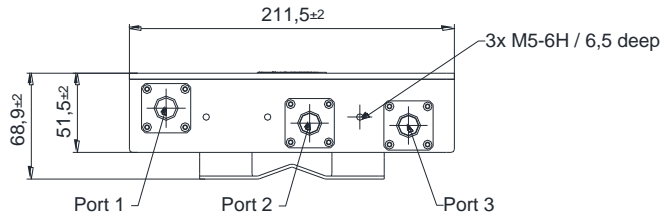
Block Diagram

Part number	BN 570720	BN570722	BN570721	BN 570723
Version	single	double	single	double
Connectors	4.3-10 female (50 Ohms)			
Frequency range	Port 1 694 - 960 MHz ( LTE700-GSM900) Port 2 1710 – 1880 MHz ( GSM1800) Port 3 1920 – 2170 MHz (UMTS)			
Insertion loss	Port 1 → Port 4 ≤ 0.20 dB Port 2 → Port 4 ≤ 0.35 dB Port 3 → Port 4 ≤ 0.45 dB			
Isolation	Port 1 → Port 2, 3 Port 2 → Port 1, 3 Port 3 → Port 1, 2 ≥ 50 dB			
VSWR	≤ 1.22			
Power rating	≤ 250 W			
IM- value 3rd order @ 2 x 20 W	≤ -155 dBc   typical: ≤ -160 dBc			
DC-by-pass	All inports → Port 4 (with DC auto identification function) (max. 1A per input max. 60V DC(AISG Standard, 2.0, § 6.4))		Only on Port 3 ↔ Port 4 (bidirectional)	
Surge Protection	3 kA (10/350 µs)			
Degree of protection	IP 65			
Environmental conditions	ETSI EN 300019-1-1 Class 1.2 ETSI EN 300019-1-2 Class 2.3 ETSI EN 300019-1-4 Class 4.1E			
Weight	3.3 kg	6.6 kg	3.3 kg	6.6 kg
Wall / Mast mounting	Part of delivery			
Temperature range	-40 °C – +60 °C			

Dimensions:

570720 / 570721

Single unit



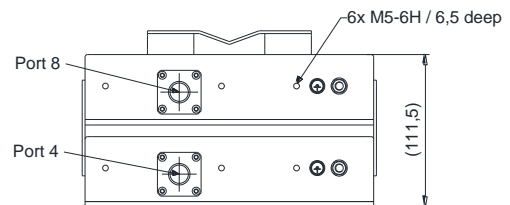
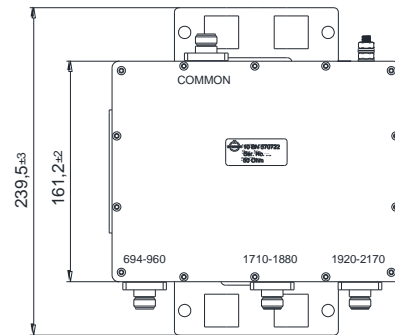
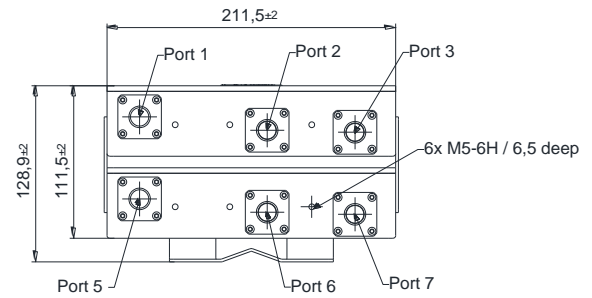
Standard:

4,3-10 female (50 ohms): IEC 61169-54

modifications reserved

570722 / 570723

Double unit



Standard:

4,3-10 female (50 ohms): IEC 61169-544

modifications reserved

Measurement:

