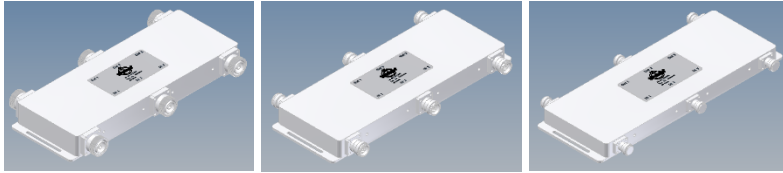


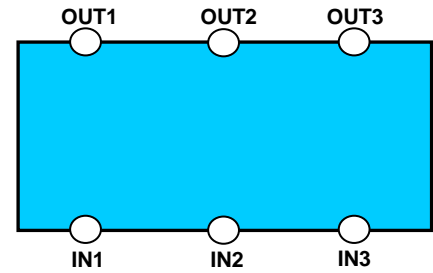
3-WAY COMBINER 694-2700 MHz



BN 570684

BN 570685

BN 570733

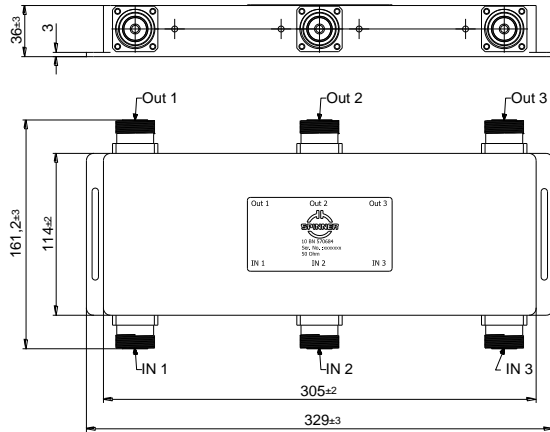


Block Diagram

Part number	BN 570684	BN 570685	BN 570733
Connectors IN 1 - 3 OUT 1 - 3	7-16 female (50 Ohms) Input ports Output ports	4.3-10 female (50 Ohms) Input ports Output ports	N female (50 Ohms) Input ports Output ports
Frequency range	694 - 2700 MHz		
Insertion loss IN 1, 2, 3 → OUT 1, 2, 3	5.0 dB ± 1.3 dB*(694 – 800MHz) 5.0 dB ± 1.0 dB*(800 – 2500MHz) 5.0 dB ± 1.3 dB*(2500 – 2700MHz)		
*including nominal 4.8dB splitting losses			
Isolation	≥ 25dB (@694 - 2500MHz) ≥ 23dB (@2500 - 2700MHz)		
VSWR	≤ 1.25		
Max. input power per port	200 W		
IM-value 3rd order @ 2 x 20W	≤ -155 dBc typ. -160 dBc		
DC-by-pass	DC path IN1 → OUT3, IN2 → OUT2, IN3 → OUT1 (max. 6.5 A AISG 2.0 conform)		
Test voltage	500 V		
Degree of protection	IP 65 outdoor		
Class. of environmental conditions	ETSI EN 300019-1-1 Class 1.2 ETSI EN 300019-1-2 Class 2.3 ETSI EN 300019-1-4 Class 4.1E		
Weight	2.6 kg	2 kg	1.6 kg
Paint color	Gray		
Wall / Mast mounting	included		
Operating temperature	-30°C - +65°C		
Dimension (L x W x H)	See drawing		

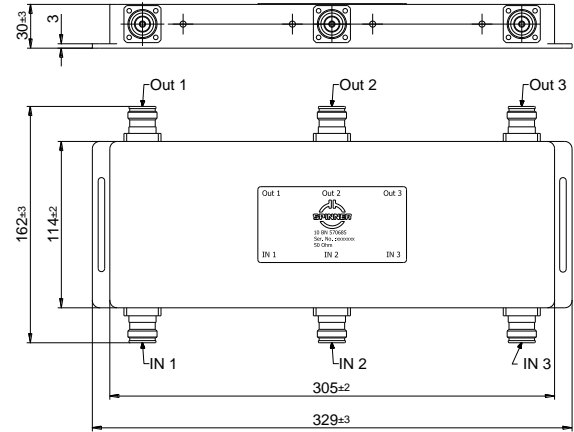
Dimensions:

BN 570684



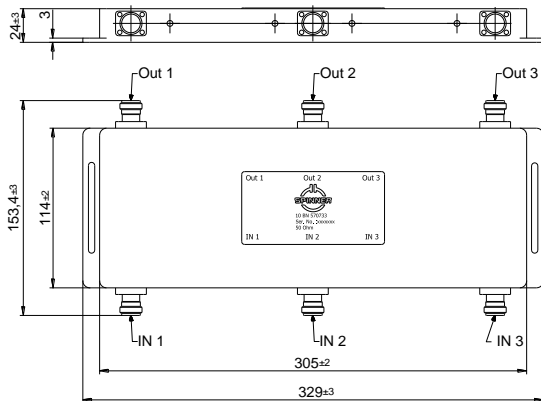
Standard:
7-16 female (50 ohms): EN 122190, IEC 61169-4 modifications reserved

BN 570685



Standard:
4.3-10 female (50 ohms): IEC 61169-54; modifications reserved

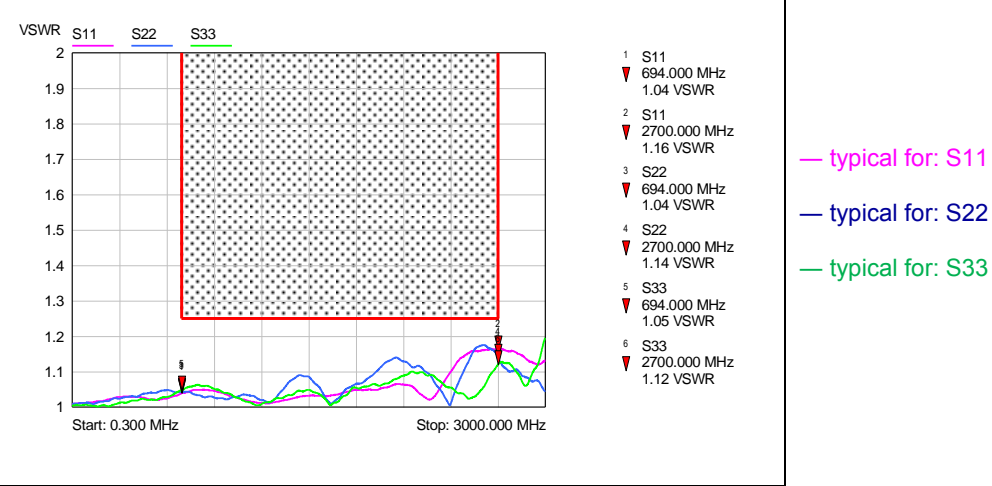
BN 570733



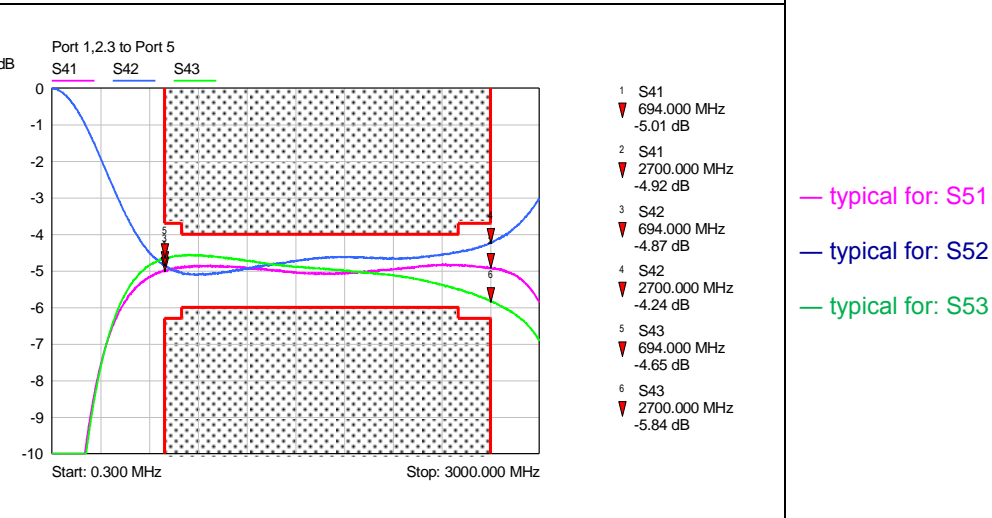
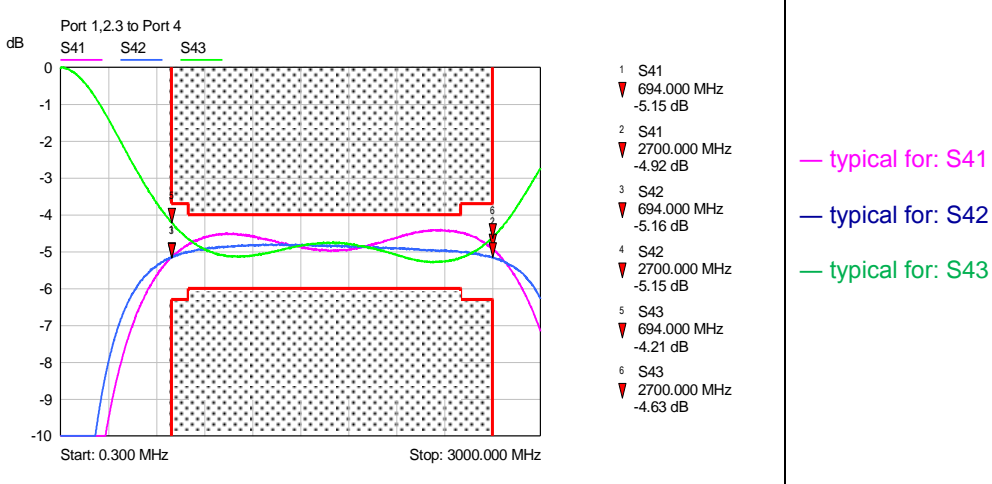
Standard:
N female (50 ohms): CECC 22210, IEC 61169-16 modifications reserved

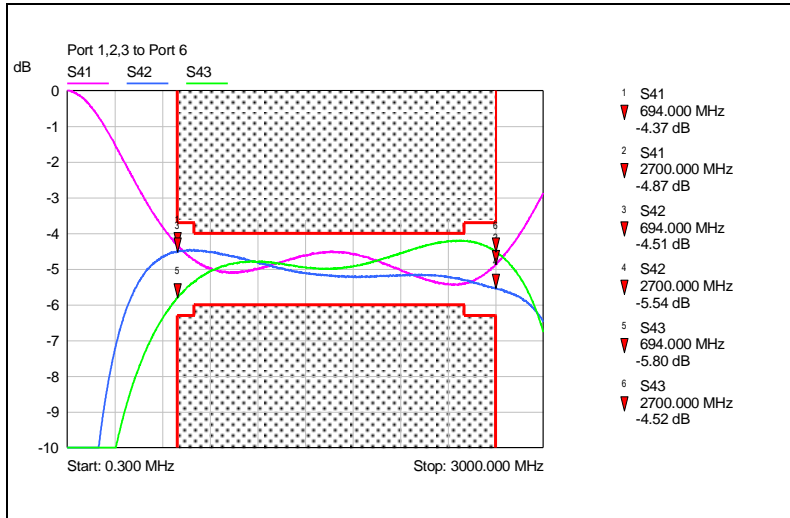
Measurement:

VSWR:



Insertion loss:

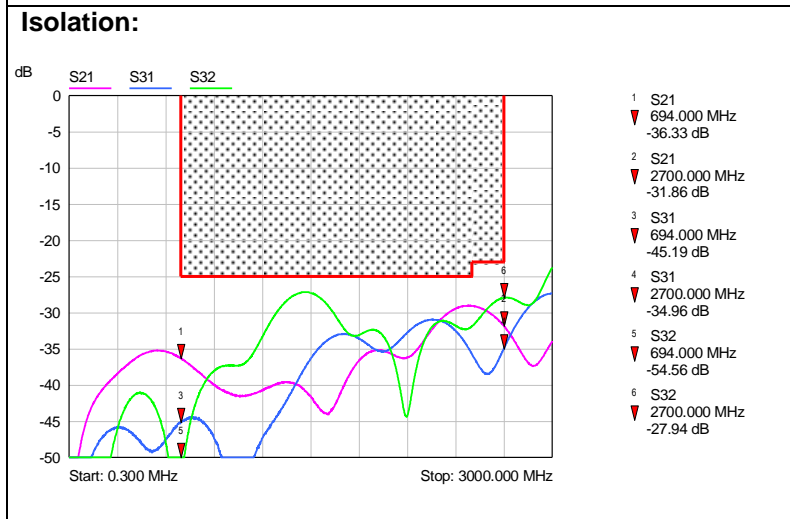




— typical for: S61

— typical for: S62

— typical for: S63



— typical for: S21

— typical for: S31

— typical for: S32