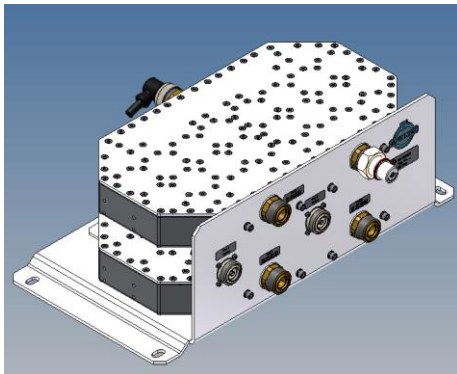
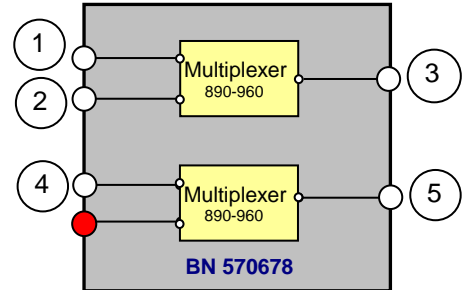


GSM900 Multiplexer and GSM900 UL DL Filter



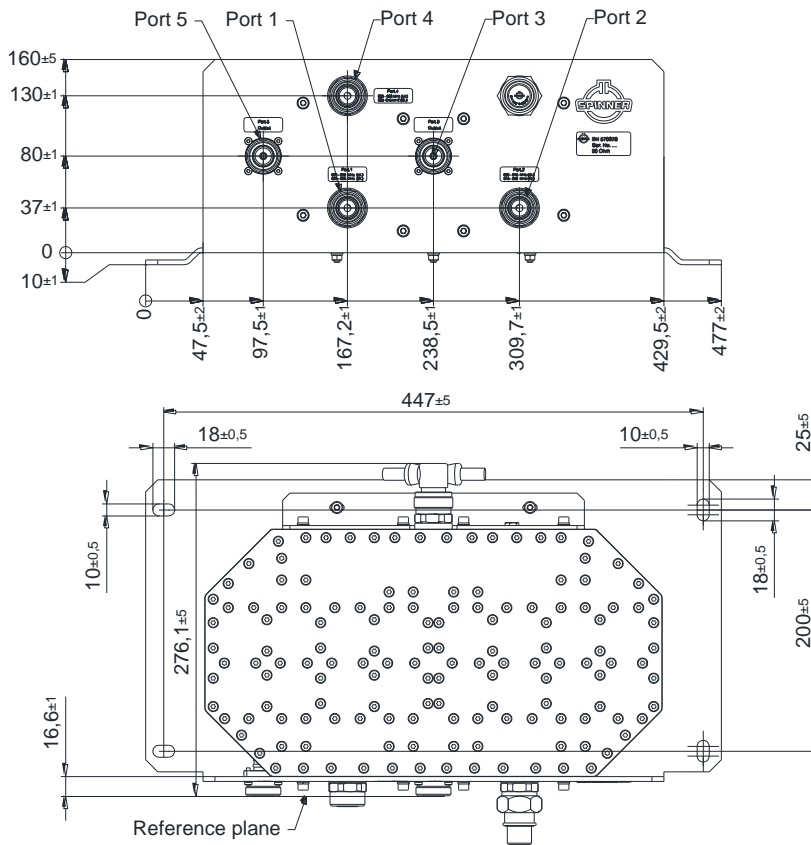
not binding



block diagram

Part number		BN 570678
Connectors		7-16 socket (50 Ohms)
Frequency range	Port 1 Port 2 Port 4	880 – 890 MHz (UL) / 925 – 935 MHz (DL) 900 – 915 MHz (UL) / 945 – 960 MHz (DL) 890 – 900 MHz (UL) / 935 -945 MHz (DL)
Insertion loss	Port 1 → Port 3 Port 2 → Port 3 Port 4 → Port 5	≤ 1.2 dB ≤ 1.2 dB ≤ 1.0 dB
Isolation	Port 1 ↔ Port 2	≥ 30 dB
VSWR		≤ 1.2
Power rating		100 W (CW) max. per port
Intermodulation products in RX band with 2 x 43dBm (20 W)		≤-155 dBc typical: ≤ -160dBc
Degree of protection		Indoor use
Environmental conditions		ETSI EN 300019-1-1 Class 1.2 ETSI EN 300019-1-2 Class 2.3 ETSI EN 300019-1-3 Class 3.3
Wall / Mast mounting		part of delivery
Temperature range		-25 °C – +65 °C

Dimensions:



SIGN			
No.	Input / Output	Operate	MHz
Port 1	Input	TEF	880 – 890 MHz (UL) / 925 – 935 MHz (DL)
Port 2	Input	T-Deutschland	900 – 915 MHz (UL) / 945 – 960 MHz (DL)
Port 3	Output		
Port 4	Input	Vodafone	890 – 900 MHz (UL) / 935 -945 MHz (DL)
Port 5	Output		

Standard:

7-16 female (50 ohms): CECC 22190, IEC 61169-4;

modifications reserved