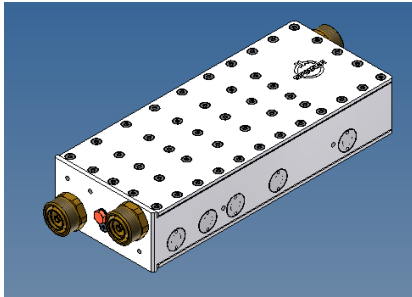
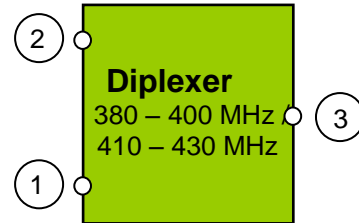


Diplexer Tetra



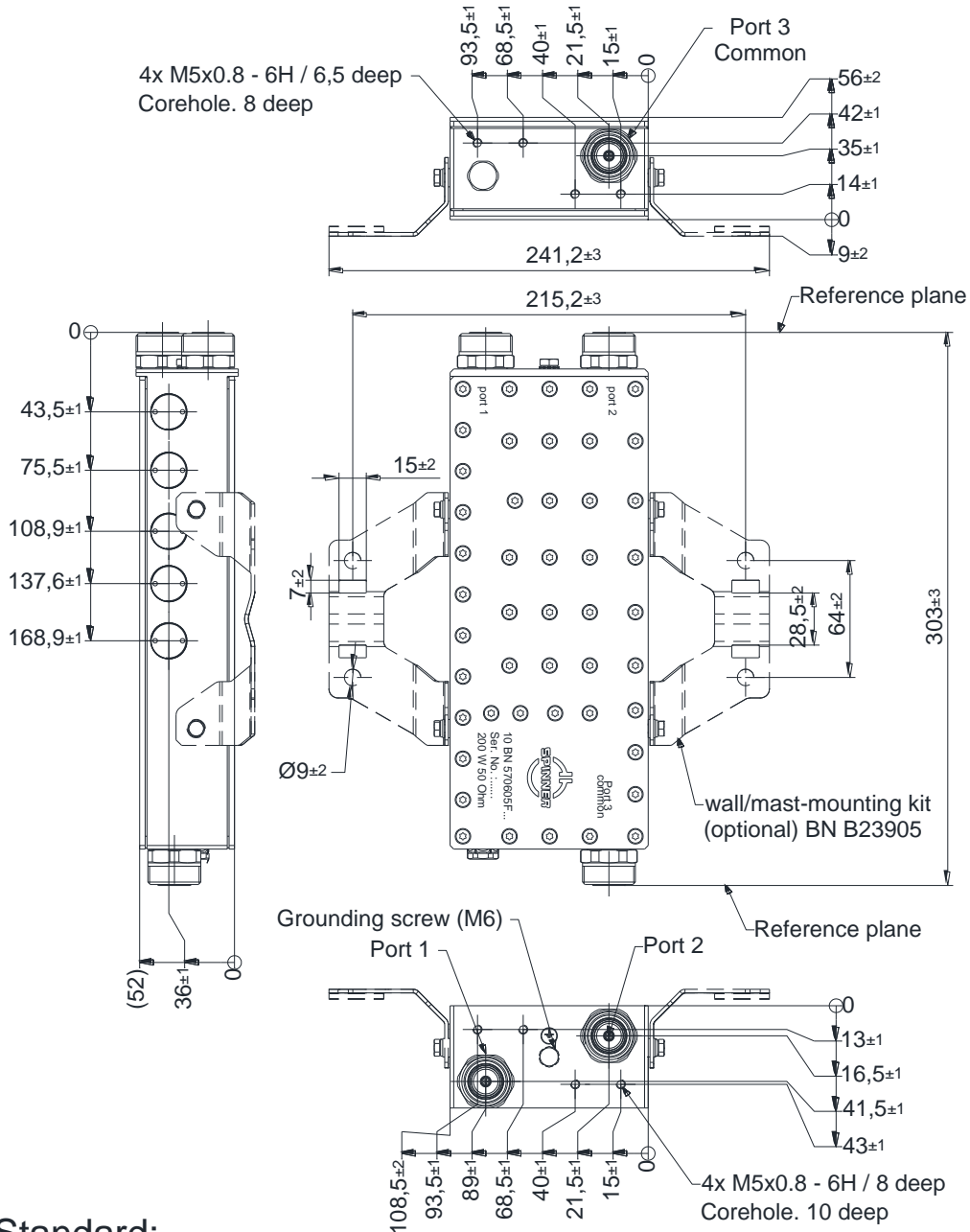
not binding



block diagram

Part number	BN 570605	
Connectors	7-16 socket (50 Ohms)	
Frequency range	Port 1	380 – 400 MHz
	Port 2	410 – 430 MHz
Insertion loss	Port 1 to Port 3	≤ 0.8 dB typ. ≤ 1.3 dB @ 400 MHz
	Port 2 to Port 3	≤ 0.8 dB typ. ≤ 1.3 dB @ 410 MHz
Isolation		≥ 60 dB typ.
		≥ 40 dB @400 MHz
		≥ 40 dB @410 MHz
VSWR		≤ 1.22
Power rating	Port 1	200 W
	Port 2	200 W
IM – value 3rd order @ 2 x 20 W		≤ -150dBc typical: ≤ -160dBc
Special feature		DC stop between all ports
Degree of protection		IP 65 (outdoor use)
Environmental conditions		ETSI EN 300019-1-1 Class 1.2
		ETSI EN 300019-1-2 Class 2.3
		ETSI EN 300019-1-3 Class 4.1E
Weight		Approx. 4.0 kg
Wall / Mast mounting		to be ordered separately under BN B23905
Temperature range		-5 °C – +60 °C

Dimension:



Standard:

7-16 female (50 ohms): CECC 22190, IEC 61169-4

modifications reserved

Measurements:

