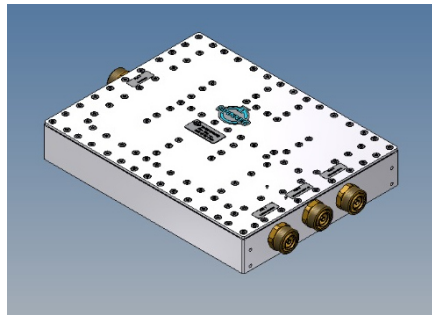
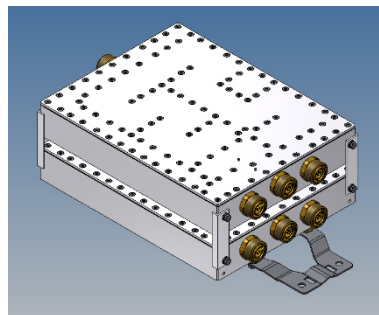


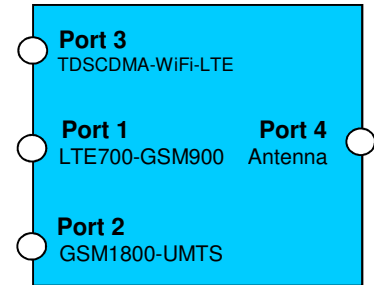
Triplexer LTE700-GSM900 / GSM1800-UMTS / TDSCDMA-WiFi-LTE



single unit



double unit

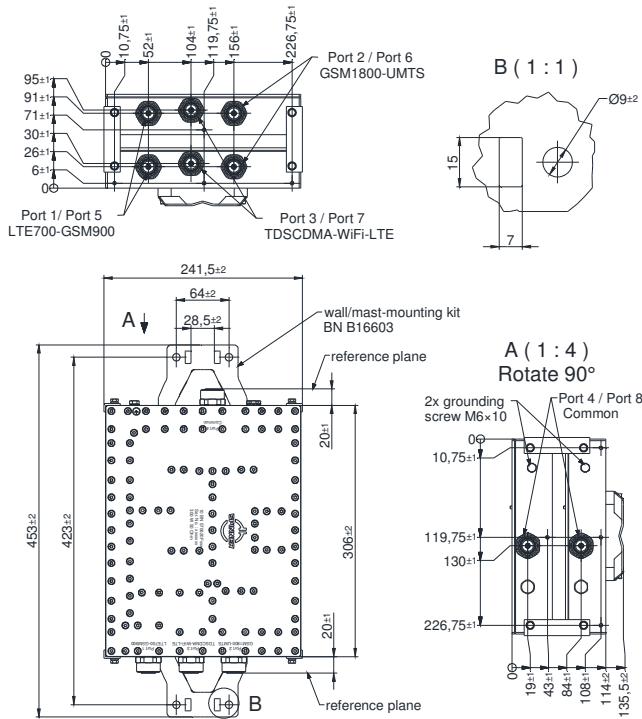


Block Diagram

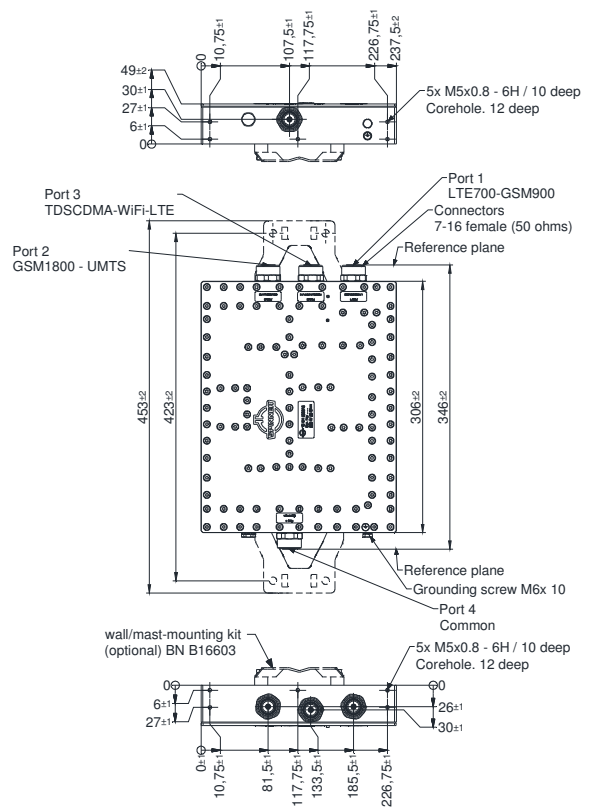
Part number		BN 570515	BN 570620
Version		single	double
Connectors		7-16 female (50 Ohms)	
Frequency range	Port 1 Port 2 Port 3	690 – 960 MHz (LTE700-GSM900) 1710 – 2170 MHz (GSM1800-UMTS) 2300 – 2690 MHz (TDSCDMA-WiFi-LTE)	
Insertion loss	Port 1, 2, 3 → Port 4	≤ 0.30 dB (typ. 0.15 dB)	
Isolation	Port 1 → Port 2, 3 Port 2 → Port 1, 3 Port 3 → Port 1, 2	≥ 50 dB (typ. 65 dB) ≥ 60 dB (typ. 65 dB) ≥ 60 dB (typ. 65 dB)	
VSWR		≤ 1.25 (typ. 1.2)	
Power rating	Port 1 Port 2 Port 3	≤ 300 W ≤ 300 W ≤ 300 W	
IM - Value	3rd order @ 2 x 20 W	≤ -155 dBc typical: ≤ -160 dBc	
DC by-pass		all inputs Max. 1 A per input max. 60 V DC (AISG Standard, 2.0, § 6.4)	
Surge Protection		3 kA (10/350 μs)	
Degree of protection		IP 65 (outdoor)	
Environmental conditions		ETSI EN 300019-1-1 Class 1.2 ETSI EN 300019-1-2 Class 2.3 ETSI EN 300019-1-4 Class 4.1E	
Weight		6.3 kg	12.5 kg
Wall / Mast mounting		to be ordered separately under BN B16603	part of delivery
Temperature range		- 25°C – + 65°C	

Dimensions:

Double Unit



Single Unit

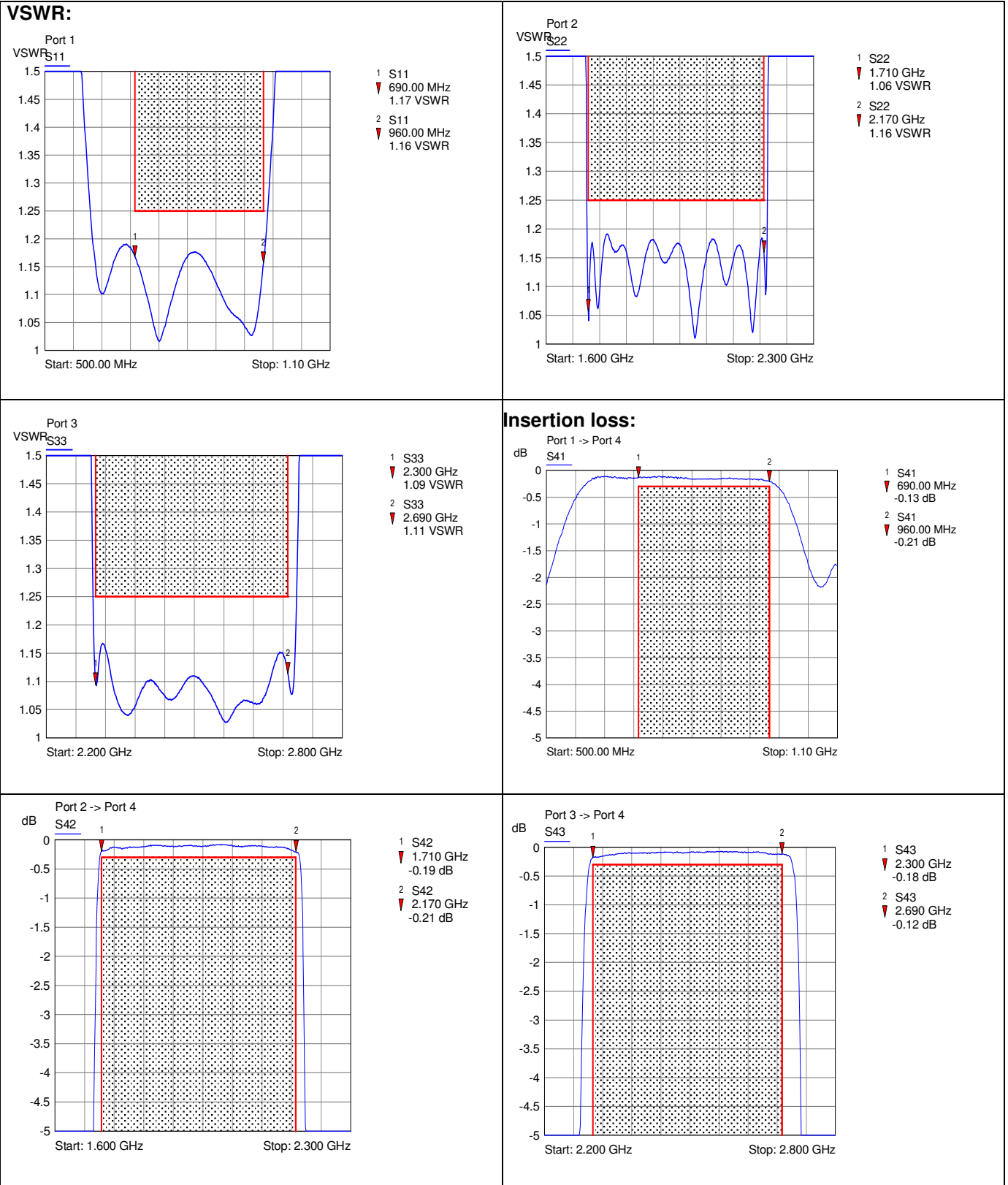


Standard:

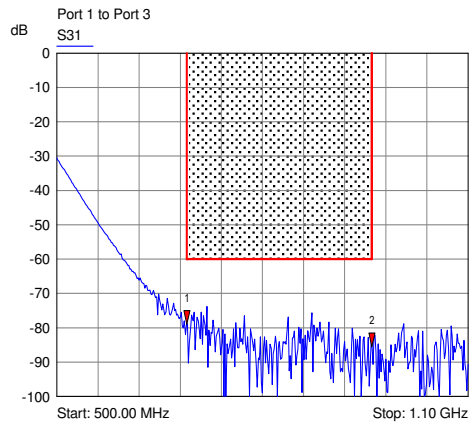
7-16 female (50 ohms): CECC 22190, IEC 61169-4

modifications reserved

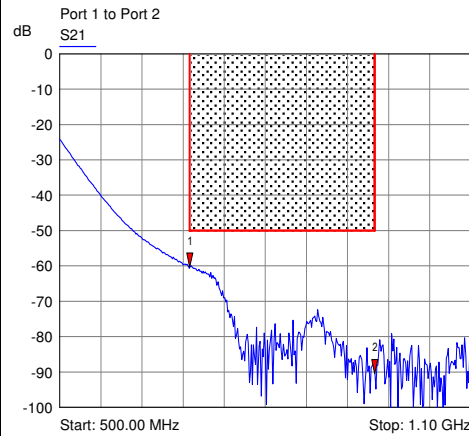
Measurements:



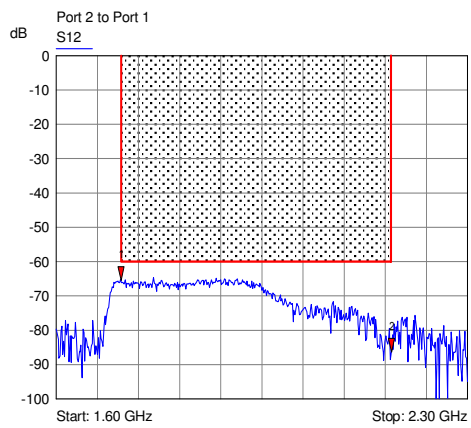
Isolation:



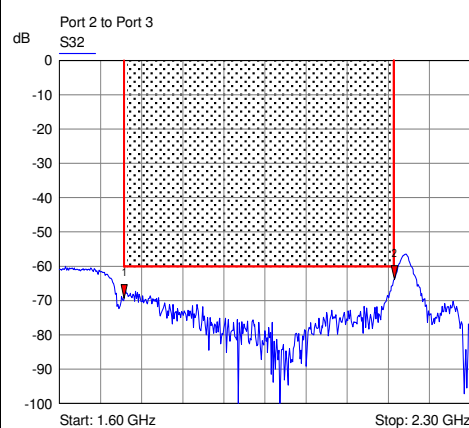
- 1 S31
▼ 690.00 MHz
-78.98 dB
- 2 S31
▼ 960.00 MHz
-85.54 dB



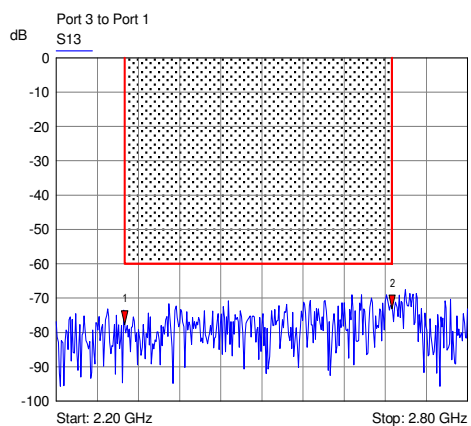
- 1 S21
▼ 690.00 MHz
-60.33 dB
- 2 S21
▼ 960.00 MHz
-90.51 dB



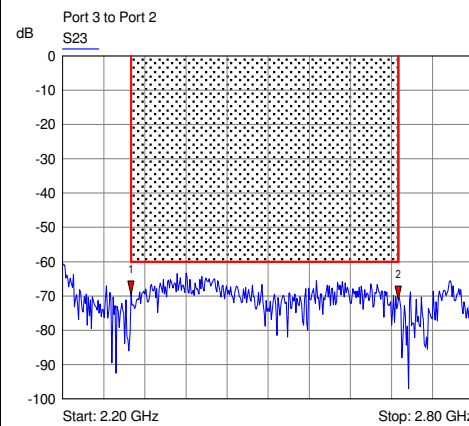
- 1 S12
▼ 1.71 GHz
-65.56 dB
- 2 S12
▼ 2.17 GHz
-86.37 dB



- 1 S32
▼ 1.71 GHz
-69.23 dB
- 2 S32
▼ 2.17 GHz
-63.73 dB



- 1 S13
▼ 2.30 GHz
-77.69 dB
- 2 S13
▼ 2.69 GHz
-73.19 dB



- 1 S23
▼ 2.30 GHz
-69.71 dB
- 2 S23
▼ 2.69 GHz
-71.21 dB