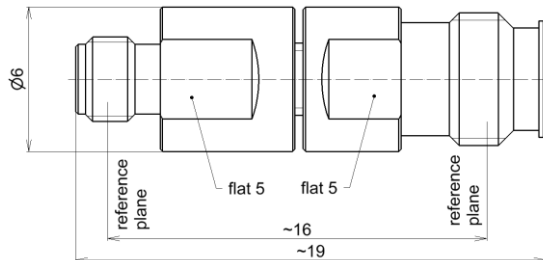


Adapter; precision, 1.35 mm socket, 0.8 mm socket | BN 534954

A photo of the product is to be placed here.



all dimensions in millimeter

Radio frequency characteristics

Interface type	1.35 mm socket per IEEE Std 287 0.8 mm socket per IEEE Std 287
Frequency range	DC to 90 GHz
Characteristic impedance	50 Ω
Return loss, min.	28 dB @ DC to 20 GHz
	20 dB @ 20 to 50 GHz
	17 dB @ 50 to 90 GHz
Insertion loss, max. / typ.	0.6 dB / 0.4 dB

Mechanical characteristics

Inner conductor material / surface coating	CuBe age hardened / gold-plated
Outer conductor material / surface coating	CuBe / gold-plated copper alloy / gold-plated
Other parts material / surface coating	copper alloy / gold-plated
Weight, approx.	10 g
Marking	laser engraving

Environmental conditions

<b>Operation</b>	
Ambient temperature range	+18 to +28°C
Relative humidity, max.	95% (non-condensing)
<b>Storage</b>	
Ambient temperature range	-40 to +70°C
Relative humidity, max.	95% (non-condensing)

Scope of delivery and accessories

Scope of delivery	protective caps
-------------------	-----------------

SPINNER GmbH  
 This document is proprietary to us.  
 All rights reserved. Any use, transfer, or reproduction of this document  
 or the know-how contained therein requires our express consent.

Template TD-00261.dotx