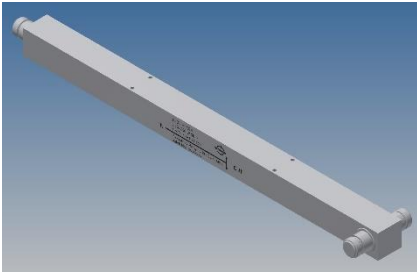
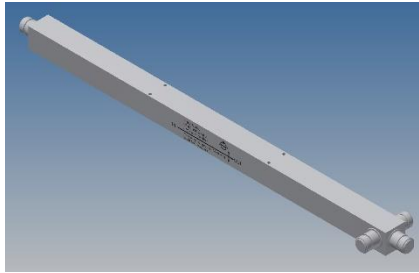


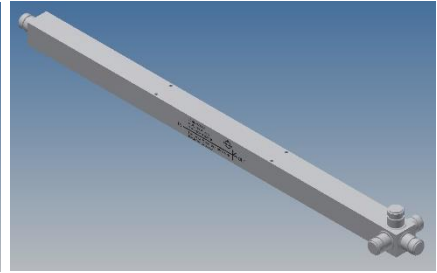
Cavity 2, 3, 4-Way- power splitter



2 way splitter



3 way splitter



4 way splitter

Electrical characteristics

Part number	BN 923024	BN 923025	BN 923026
Splitting ratio	1: 0.5: 0.5	1: 0.33: 0.33: 0.33	1: 0.25: 0.25: 0.25: 0.25
Frequency range:	350 – 3800 MHz		
Insertion loss:	≤ 3.3 dB	≤ 5.2 dB	≤ 6.6 dB
Return loss (Port 1)	≤ 1.25 (Port 1)	≤ 1.25 (Port 1)	≤ 1.35 (Port 1)
Impedance	50 Ohm		
Passive intermodulation (IM3), 3rd order @ 2 x 20W	-140 dBc max.		
Power Rating:	≤ 250 W CW		

Mechanical characteristics

Connectors	N female		
Dimensions, approx.	See drawing		
Weight, approx.	964 g	1045 g	1134 g
Color	grey		
Wall / Mast mounting	to be ordered separately under BN B30342		

Environmental conditions

Class. of environmental conditions	ETSI EN 300019-1-1 Class 1.2 ETSI EN 300019-1-2 Class 2.3 ETSI EN 300019-1-4 Class 4.1E
Degree of protection	IP 65 (Outdoor)
Operation Ambient temperature range	-30 °C to +65 °C
Storage Ambient temperature range	-40 °C to +85 °C
Relative humidity, max.	95% (non-condensing)

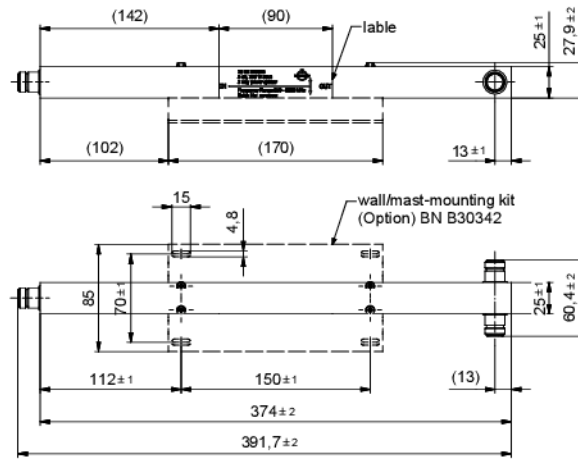
This document is proprietary to us. All rights reserved. Any use, transfer, or reproduction of this document or the know-how contained therein requires our express consent.

Template TD-00002Y

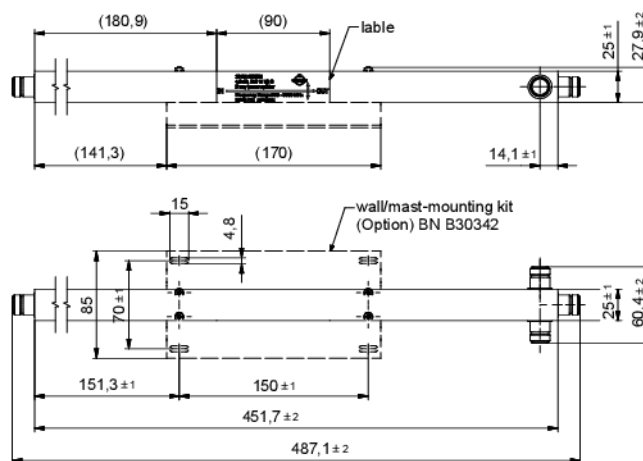
Cavity 2, 3, 4-Way- power splitter

Outline (all dimensions in millimeter)

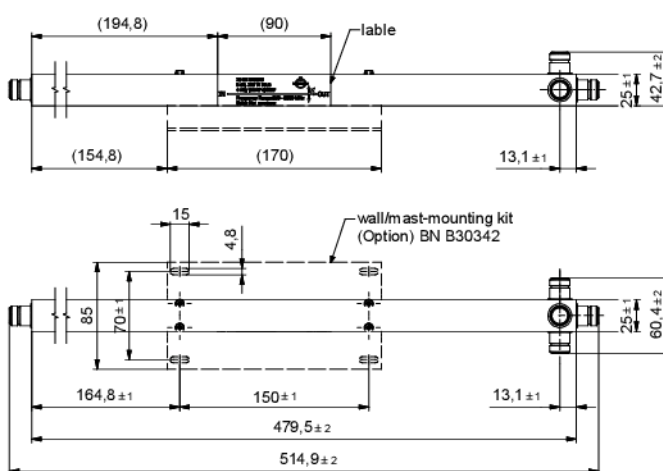
923024



923025



923026



Standard:
N female (50 ohms): CECC 22210, IEC 61169-16

modifications reserved!

SPINNER GmbH
This document is proprietary to us.
All rights reserved. Any use, transfer, or reproduction of this document
or the know-how contained therein requires our express consent.

Template TD-00002Y