

Gas Discharge Arrestor
Static sparkover voltage 600 Volt

Sparkover voltage:

- Static (100 V/s) 510 V to 720 V
- Dynamic (1 kV/μs) ≤ 1200 V

RF power rating:

(unmodulated; VSWR=1; sea level; 40 °C) ≤ 1200 W

Arc (residual) voltage:

≤ 25 V

Allowed surge current:

- Single pulse (8/20 μs) min. 25 kA
- 5 pulses in 3 min. (8/20 μs) min. 10 kA

Isolation resistance:

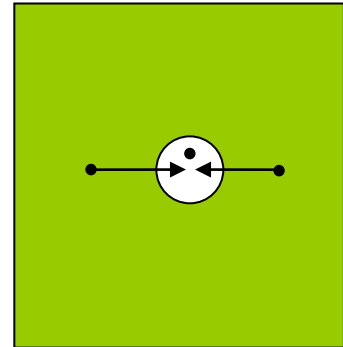
≥ 1 GΩ

Capacitance:

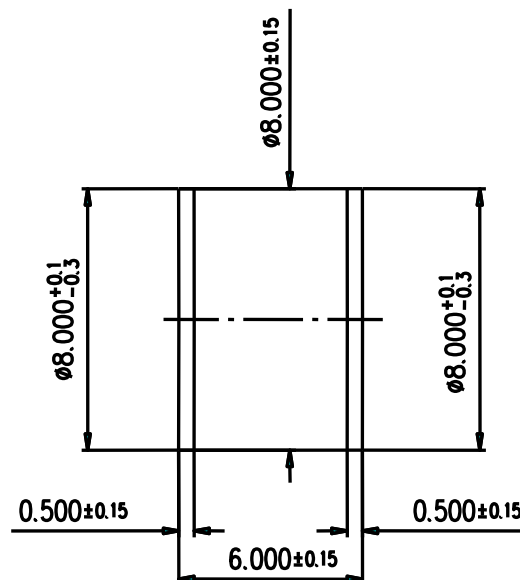
≤ 1 pF

Free from radioactivity

Dimensions:



Symbol for
Block diagrams



(dimensions in mm)

modifications reserved