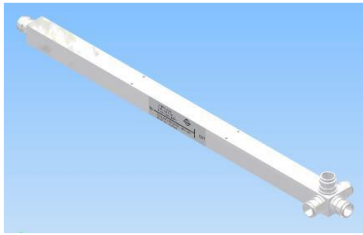
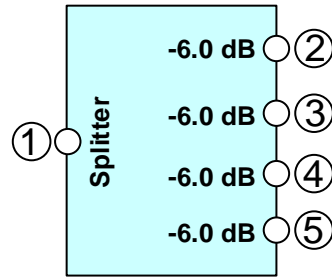


Cavity 4-Way- power splitter



Picture not binding



block diagram

**Electrical characteristics**

Part number	<b>BN 818274F001</b>		
Splitting ratio	1 : 0.25 : 0.25 : 0.25 : 0.25		
Frequency range:	88 – 136 MHz	136 – 350 MHz	350 – 3800 MHz
Insertion loss:	≤ 7.9 dB	≤ 7.9 dB	≤ 6.6 dB
Return loss (Port 1)	≤ -4.5 dB	≤ -4.5 dB	≤ -16.5 dB
Impedance	50 Ohm		
Passive intermodulation (IM3), 3rd order @ 2 x 20W	-155 dBc max. / -160 dBc typ.		
Power Rating:	≤ 400 W CW		

**Mechanical characteristics**

Connectors	4.3-10 female
Dimensions, approx.	65 x 65 x 519 mm (Width x Height x Depth)
Weight, approx.	1134 g
Color	grey (RAL 7047)
Wall / Mast mounting	to be ordered separately under BN B30342

**Environmental conditions**

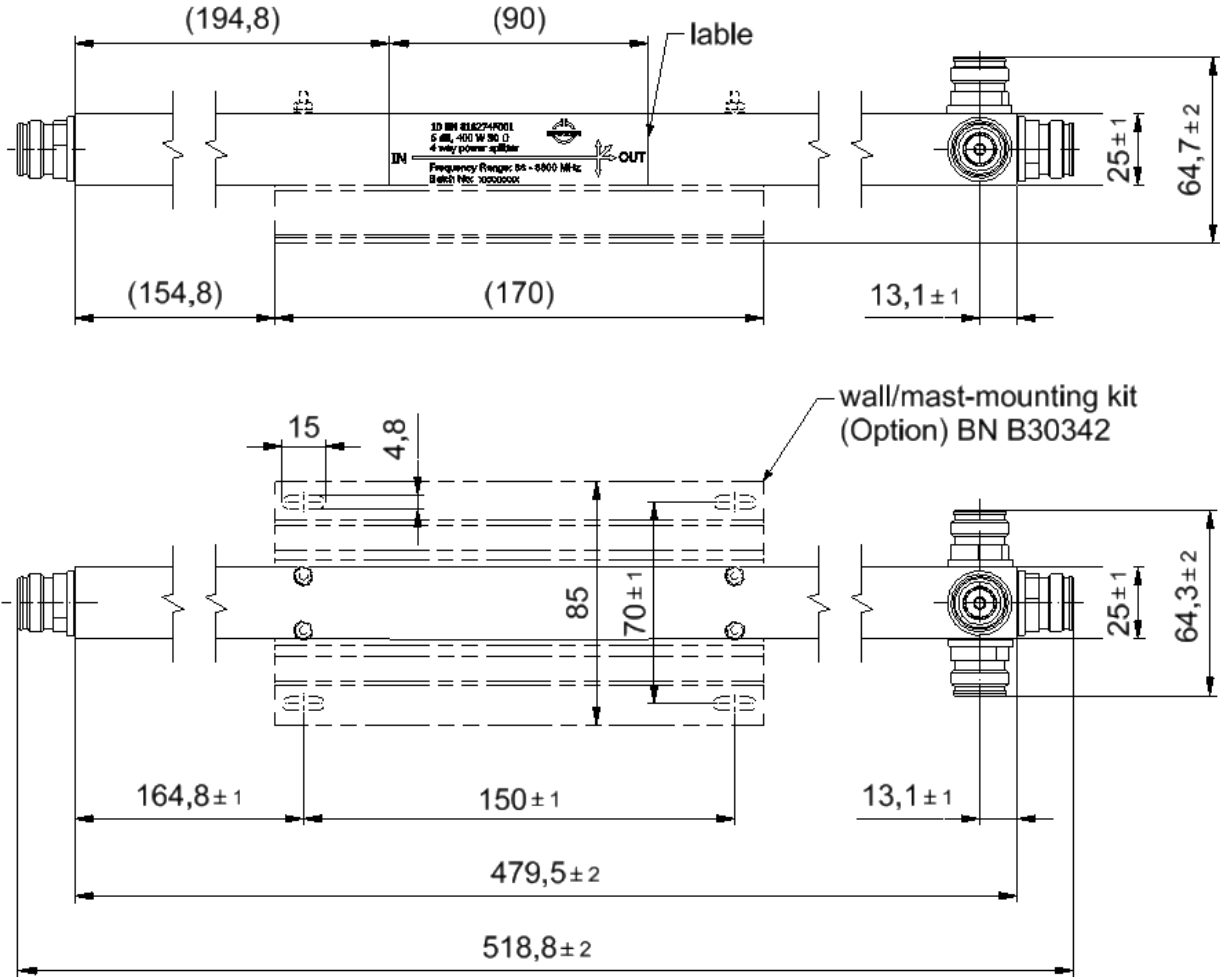
Class. of environmental conditions	ETSI EN 300019-1-1 Class 1.2 ETSI EN 300019-1-2 Class 2.3 ETSI EN 300019-1-4 Class 4.1E
Degree of protection	IP 65 (Outdoor)
Operation Ambient temperature range	-30 °C to +65 °C
Storage Ambient temperature range	-40 °C to +85 °C
Relative humidity, max.	95% (non-condensing)

This document is proprietary to us. All rights reserved. Any use, transfer, or reproduction of this document or the know-how contained therein requires our express consent.

SPINNER GmbH  
 Template TD-00002Y

Cavity 4-Way- power splitter

Dimension:



SPINNER GmbH  
 This document is proprietary to us.  
 All rights reserved. Any use, transfer, or reproduction of this document  
 or the know-how contained therein requires our express consent.

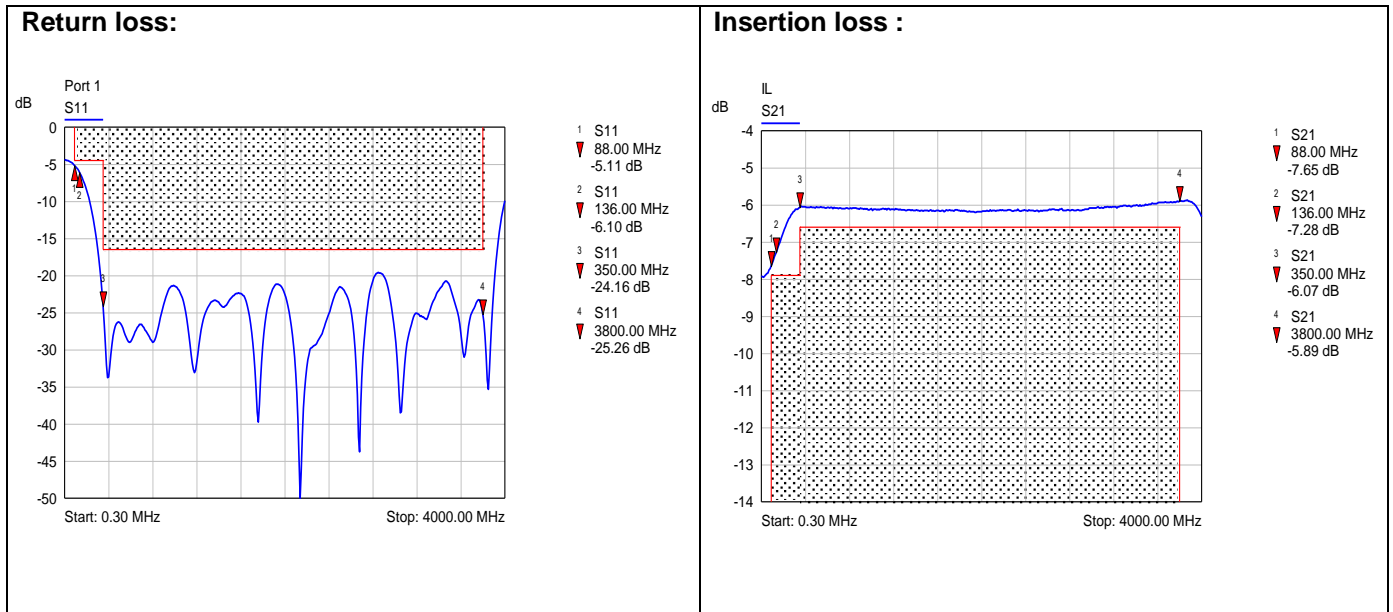
Standard:

4.3-10 female (50 ohms): IEC 61169-54

modifications reserved!

Cavity 4-Way- power splitter

Measurement:



This document is proprietary to us. All rights reserved. Any use, transfer, or reproduction of this document or the know-how contained therein requires our express consent.

SPINNER GmbH  
 Template TD-00002Y