

## Bandpass Filter TETRA TX

### Connectors

7-16 female (50 Ohms)

### Frequency range

Passband 390 – 395 MHz

### Insertion loss

Passband  $\leq 0.5$  dB

### Isolation:

RX Band	380 – 385 MHz	$\geq 30$ dB
GSM 900	890 – 960 MHz	$\geq 50$ dB

### VSWR

$\leq 1.25$

### Power rating

200 W

### Intermodulation products

3rd order @ 2 x 20 W  $\leq -150$  dBc | typical:  $\leq -160$  dBc

### Degree of protection

IP 54 (indoor)

### Weight

1.7 kg

### Wall / Mast mounting

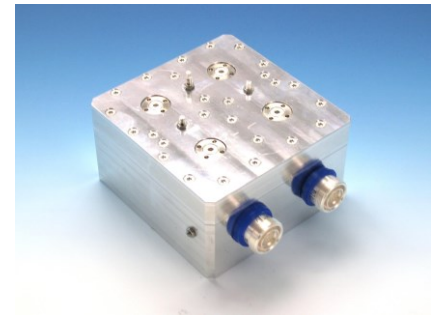
to be ordered separately under BN B07787

### Temperature range

-5 °C – +60 °C

### Appendix:

Dimensions	VSWR
	Insertion loss
	Isolation

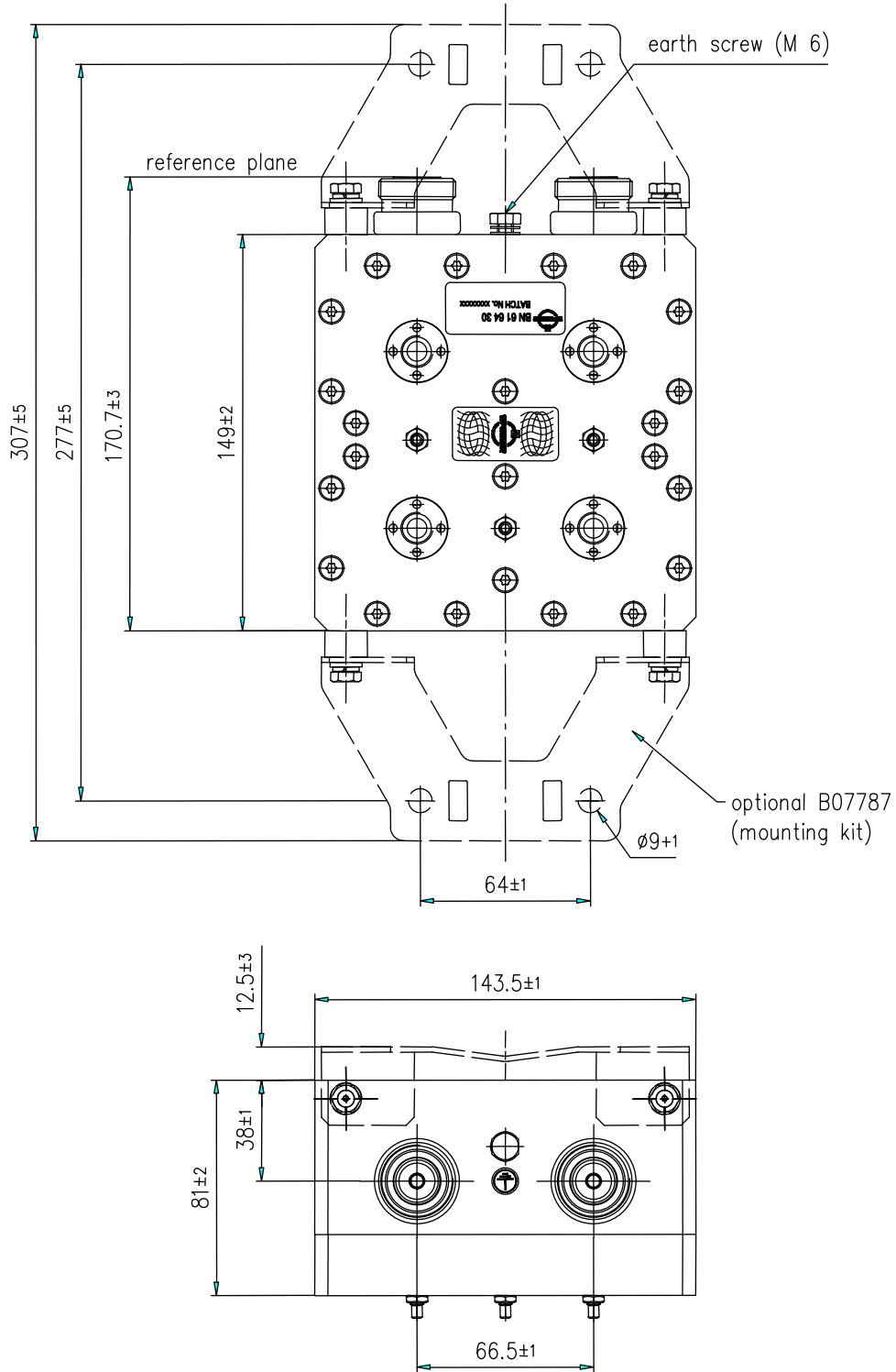


not binding



Block Diagram

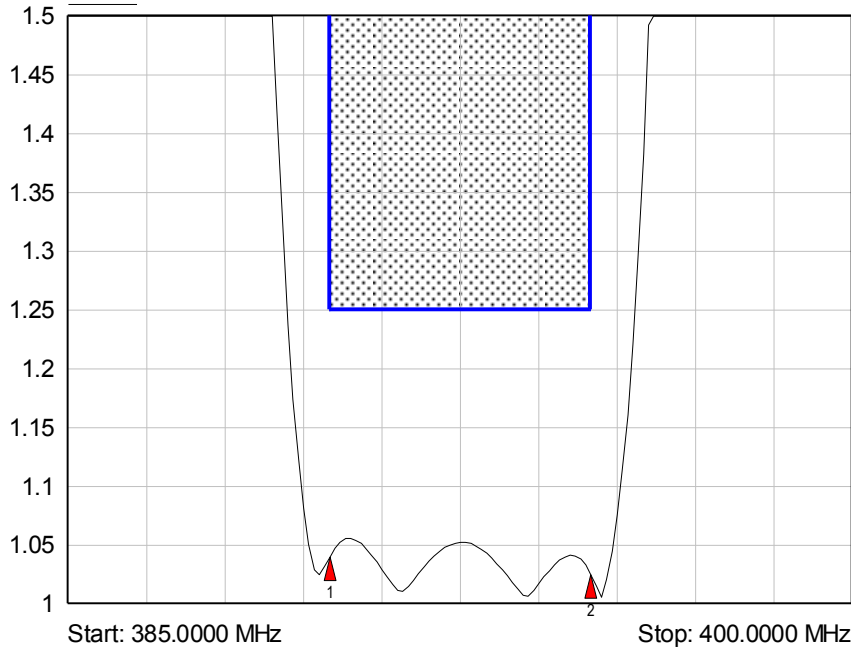
Dimensions



modifications reserved

**VSWR**

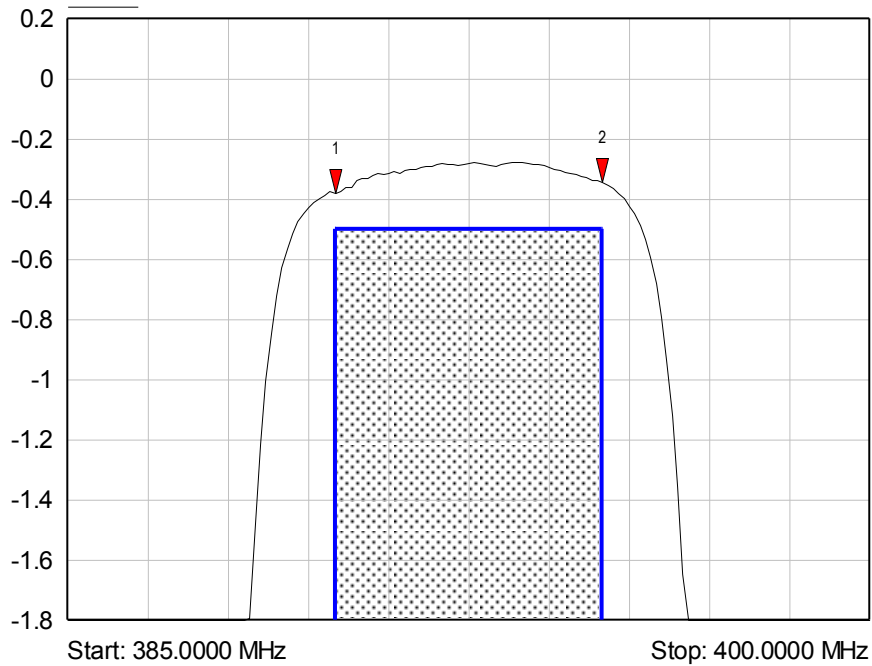
VSWR S11



- 1 S11  
▼ 390.0000 MHz  
1.04 VSWR
- 2 S11  
▼ 395.0000 MHz  
1.03 VSWR

**Insertion loss**

dB S21



- 1 S21  
▼ 390.0000 MHz  
-0.38 dB
- 2 S21  
▼ 395.0000 MHz  
-0.36 dB

Isolation

