

Rigid Line Components 52-120 BT

- Outer conductor system copper/copper alloy
- Easy assembly
- SPINNER flaring tool BN 511400 with Insert BN 511445 available
- PTFE insulation
- For indoor application

Components

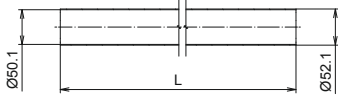
	Length	Weight	Part Number
Inner conductor tube (copper)	L = 2 m L = 4 m	2.90 kg 5.80 kg	BN A02424 BN K24058C0004
Outer conductor tube (copper)	L = 2 m L = 4 m	10.21 kg 20.42 kg	BN A02425 BN K33221C0004
Inner support		1.78 kg	BN 542705
Flange		1.72 kg	BN 049917S012
Coupling element 52-120 BT including screw set		1.31 kg	BN 528101
90° Elbow		8.52 kg	BN 528165
Adapter 52-120 BT (without coupling element) to 4 1/2" EIA (339 IEC 50-105)		4.06 kg	BN 528118
Coupling element for 4 1/2" EIA (339 IEC 50-105) incl. screw set		1.07 kg	BN 822810
Adapter 52-120 BT (without coupling element) to 6 1/8" EIA		5.30 kg	BN 528117
Coupling element for 6 1/8" EIA incl. screw set		2.12 kg	BN 919310

Electrical Data

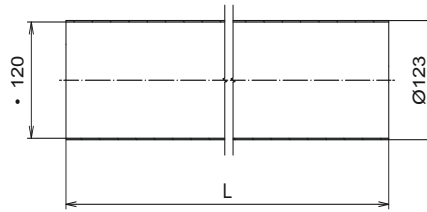
Impedance		50 Ω
Cut off frequency for H11-Mode		1.0 GHz
Proof voltage at sea level (NN)		22.0 kV
Frequency range		0 ≤ f ≤ 860 MHz
Average power at +40 °C ambient temperature	100 MHz 230 MHz 860 MHz	≤ 142.0 kW ≤ 93.0 kW ≤ 48.0 kW (≤ 60.0 kW) ¹
Attenuation at +20 °C ambient temperature (dB/100m)	100 MHz 230 MHz 860 MHz	0.22 0.33 0.63

¹ In this case it is necessary to paint the rigid line with a black, heat resistant varnish

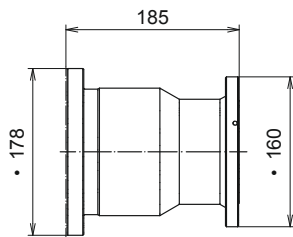
Rigid Line Components 52-120 BT



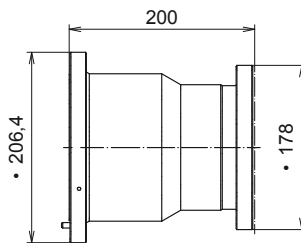
Inner conductor tube
BN A02424; BN K24058



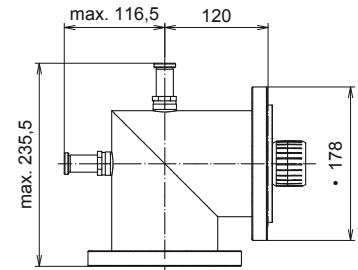
Outer conductor tube (not painted)
BN A02425; BN K33221



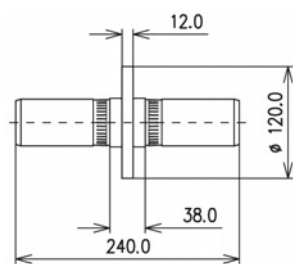
Adapter 52-120 BT to 4 1/2" EIA¹
BN 528118



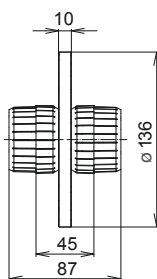
Adapter 52-120 BT to 6 1/8" EIA
BN 528117



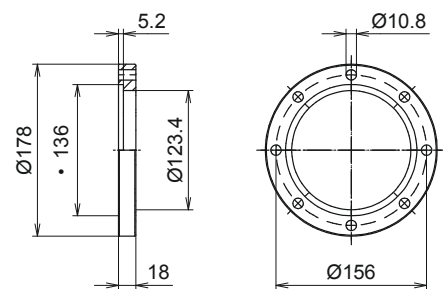
90° Elbow with adjustment screws
BN 528165



Inner support
BN 542705



Coupling element, including screw set
BN 528101



Flange, nickel plated
BN 049917S012

Length of rigid line L	Number inner supports required
3.0 m ≤ L ≤ 4.0 m	1

¹ 339 IEC 50-105

Rigid Lines & Cable
 Connectors