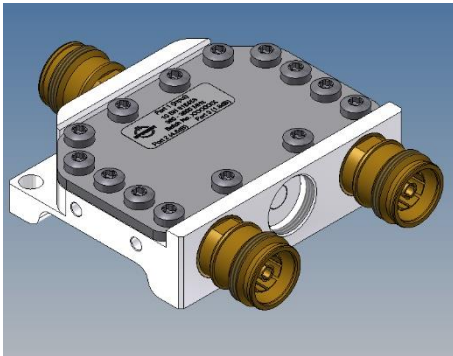
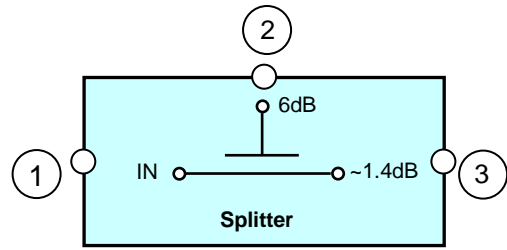


Asymmetric Splitters 4.8dB /6dB /7dB /8dB /10dB /13dB /15dB /20dB



Picture not binding



Block diagram using 6 dB as example.

Electrical characteristics

Part number	818458	818459	818460	818461	818462	818463	818464	818465	
Splitting ratio	1: 0.33: 0.67	1: 0.25: 0.75	1: 0.2: 0.8	1: 0.16: 0.84	1: 0.1 : 0.9	1: 0.05 : 0.95	1: 0.03 : 0.97	1: 0.01 : 0.99	
Insertion loss:	< 2.8 dB typ. 1.8dB	< 2.1 dB typ. 1.4dB	< 1.7 dB typ. 1.2dB	< 1.3 dB typ. 0.9dB	< 1.0 dB typ. 0.6dB	< 0.7 dB typ. 0.4dB	< 0.6 dB typ. 0.3dB	< 0.4 dB typ. 0.1dB	
Coupling	4.8 dB ± 1.5 dB	6 dB ± 1.5 dB	7 dB ± 1.5 dB	8 dB ± 1.5 dB	10 dB ± 2 dB	13 dB ± 2 dB	15 dB ± 2 dB	20 dB ± 2 dB	
Return Loss	Port 3*		≤ -5 dB	≤ -5 dB	≤ -5 dB	≤ -10 dB	≤ -10 dB	≤ -10 dB	≤ -10 dB
VSWR	Port 1		≤ 1.3						
Frequency range:	380 – 3800 MHz								
Impedance	50 Ohm								
DC-by-pass	Port 1 to Port 3 (max. 1A per input max. 60V DC (AISG Standard, 2.0, § 6.4))								
Passive intermodulation (IM3), 3rd order @ 2 x 20W	-155 dBc max. / -160 dBc typ.								
Power Rating Average power (CW)	≤ 300 W (Port 1) ≤ 100 W (Port 3)								

* According to DIN 14024-1

Mechanical characteristics

Connectors	4.3-10 female
Dimensions, approx.	82 x 105 x 24 mm (Width x Height x Depth)
Weight, approx.	0.3 kg
Color	light grey polyurea (RAL 7047)
Wall / Mast mounting	to be ordered separately under BN B23656

Environmental conditions

Class. of environmental conditions	ETSI EN 300019-1-1 Class 1.2 ETSI EN 300019-1-2 Class 2.3 ETSI EN 300019-1-4 Class 4.1E
Degree of protection	IP 65 (Outdoor)
Operation Ambient temperature range	-40 °C to +55 °C
Storage Ambient temperature range	-40 °C to +85 °C

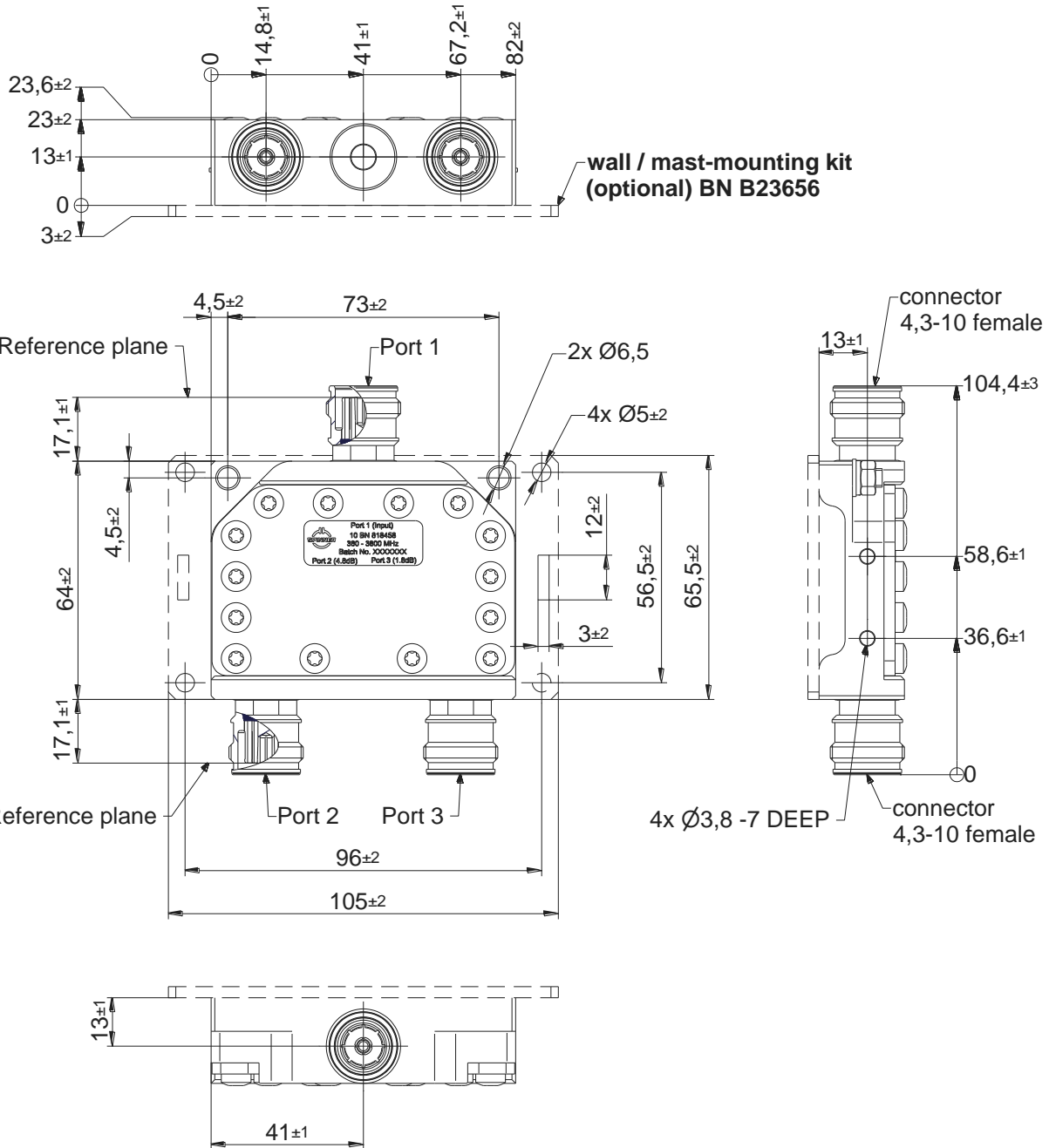
SPINNER GmbH. This document is proprietary to us. All rights reserved. Any use, transfer, or reproduction of this document or the know-how contained therein requires our express consent.

Template TD-00002Y

Asymmetric Splitters 4.8dB /6dB /7dB /8dB /10dB /13dB /15dB /20dB

Relative humidity, max.	95% (non-condensing)
-------------------------	----------------------

Outline (all dimensions in millimeter)



Standard:

4.3-10 female (50 ohms): IEC 61169-54

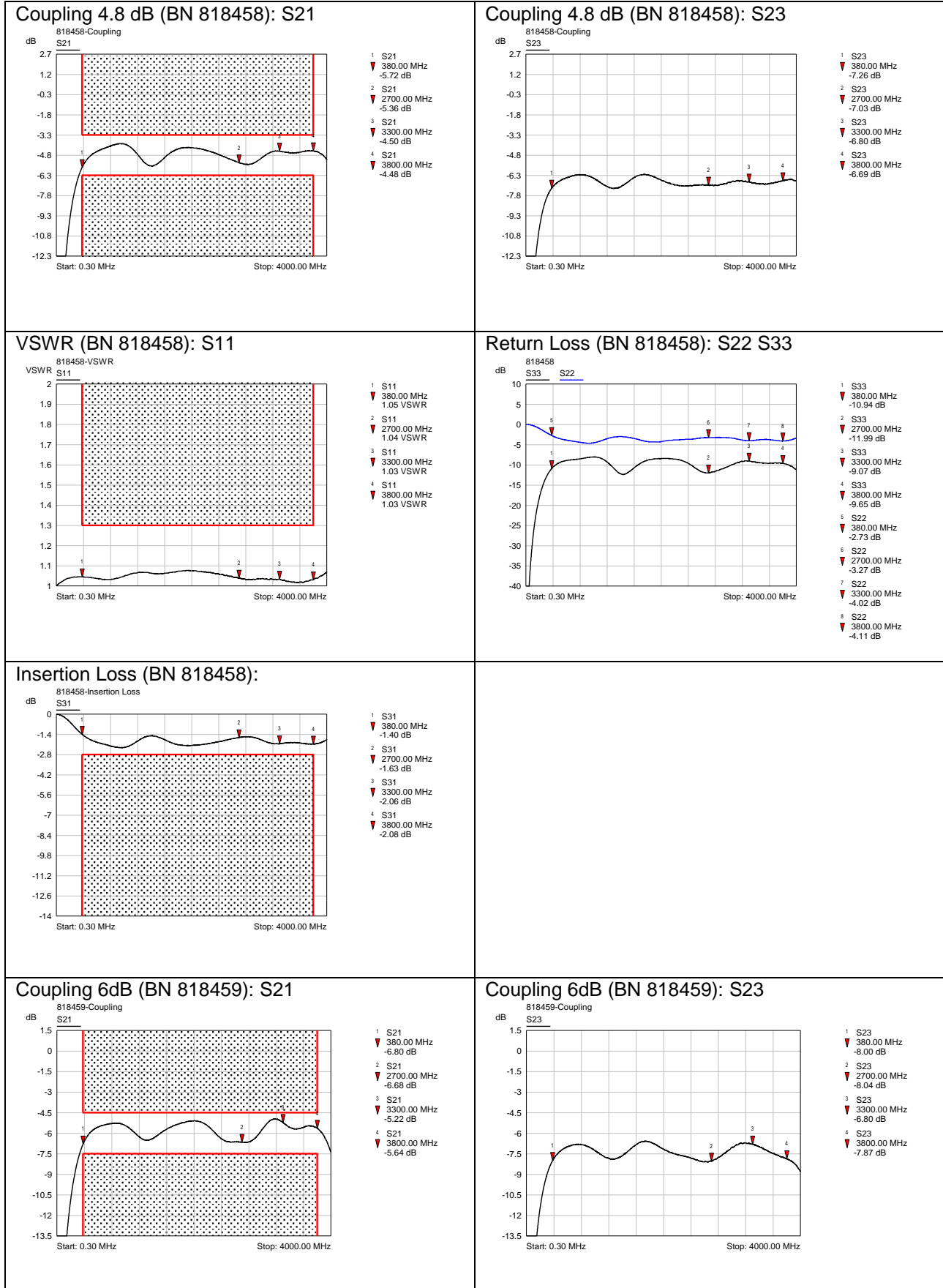
modifications reserved.

SPINNER GmbH
 This document is proprietary to us.
 All rights reserved. Any use, transfer, or reproduction of this document
 or the know-how contained therein requires our express consent.

Template TD-00002Y

Asymmetric Splitters 4.8dB /6dB /7dB /8dB /10dB /13dB /15dB /20dB

Measurement:

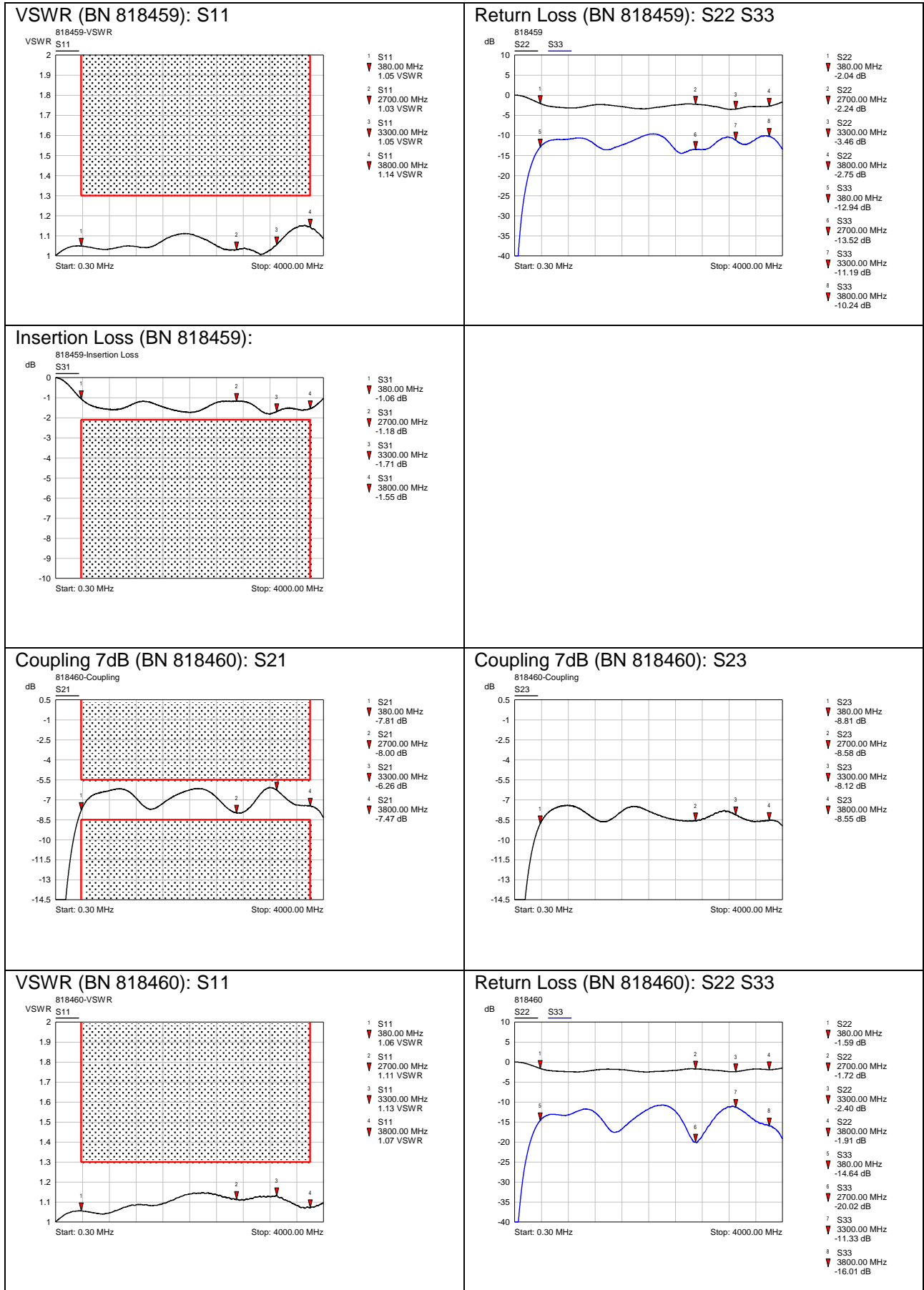


SPINNER GmbH
 This document is proprietary to us.
 All rights reserved. Any use, transfer, or reproduction of this document
 or the know-how contained therein requires our express consent.

Template TD-00002Y

Asymmetric Splitters 4.8dB /6dB /7dB /8dB /10dB /13dB /15dB /20dB

SPINNER GmbH
 This document is proprietary to us.
 All rights reserved. Any use, transfer, or reproduction of this document
 or the know-how contained therein requires our express consent.

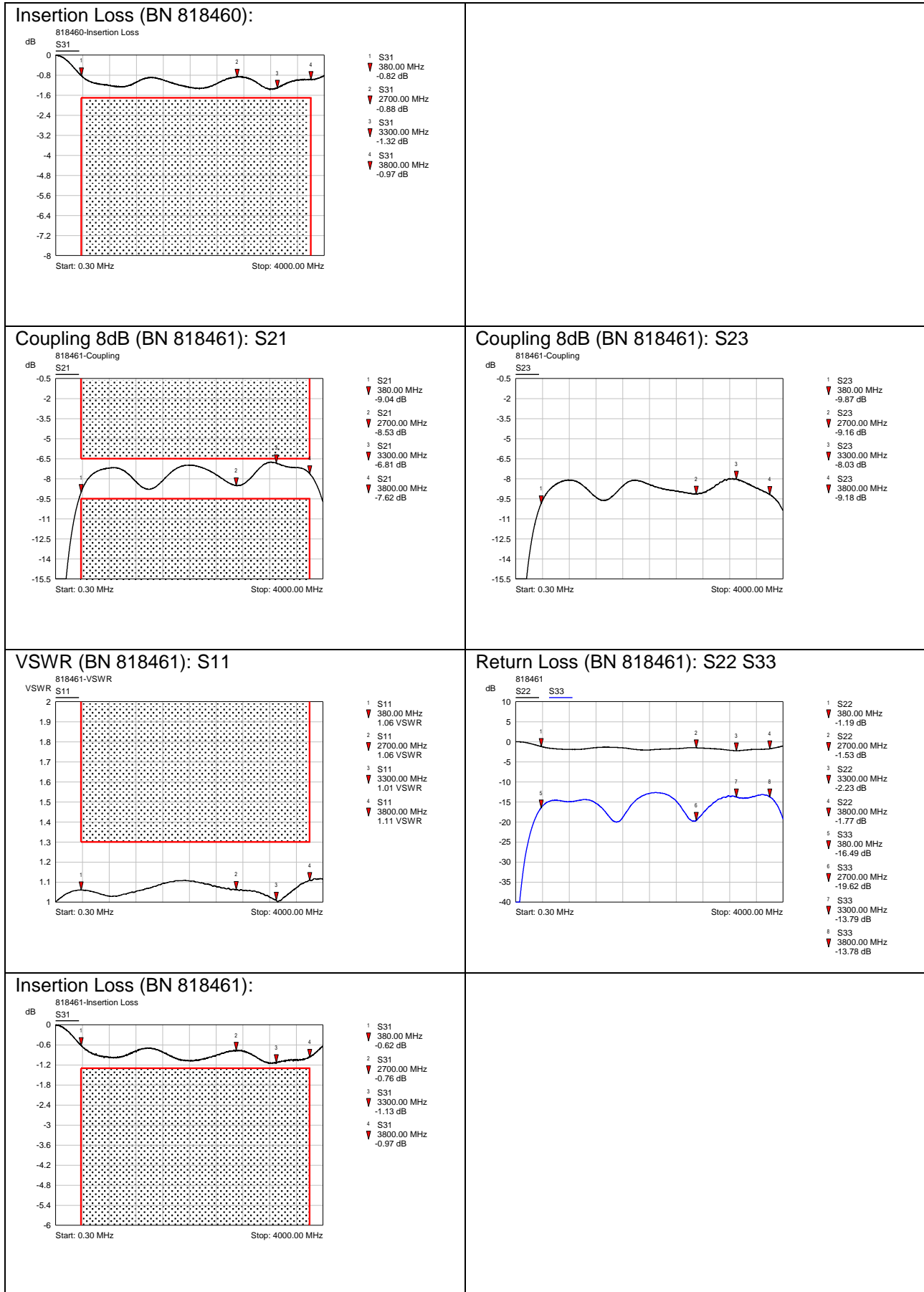


Template TD-00002Y

Asymmetric Splitters 4.8dB /6dB /7dB /8dB /10dB /13dB /15dB /20dB

This document is proprietary to us. All rights reserved. Any use, transfer, or reproduction of this document or the know-how contained therein requires our express consent.

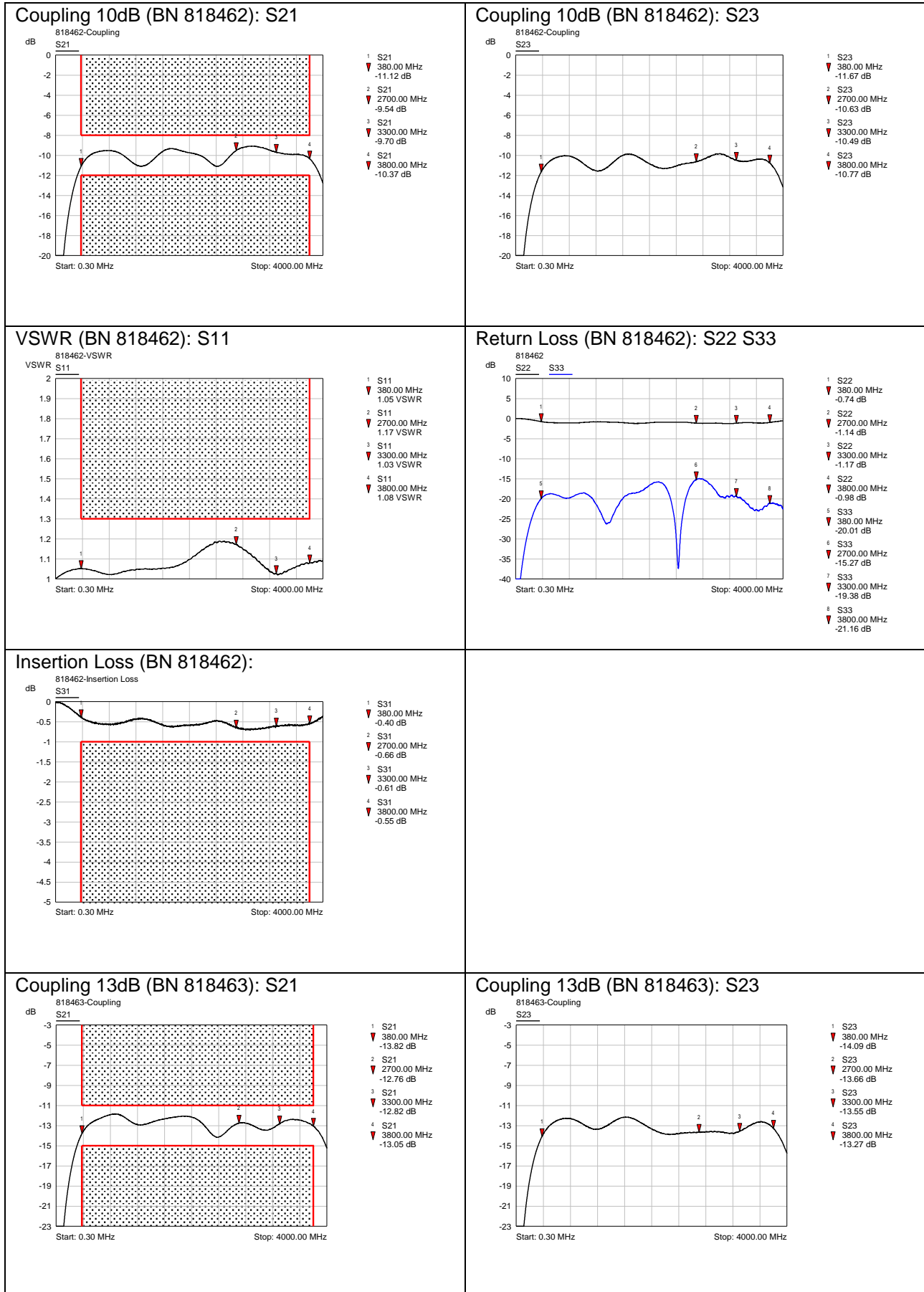
Template TD-00002Y



Asymmetric Splitters 4.8dB /6dB /7dB /8dB /10dB /13dB /15dB /20dB

SPINNER GmbH
 This document is proprietary to us.
 All rights reserved. Any use, transfer, or reproduction of this document
 or the know-how contained therein requires our express consent.

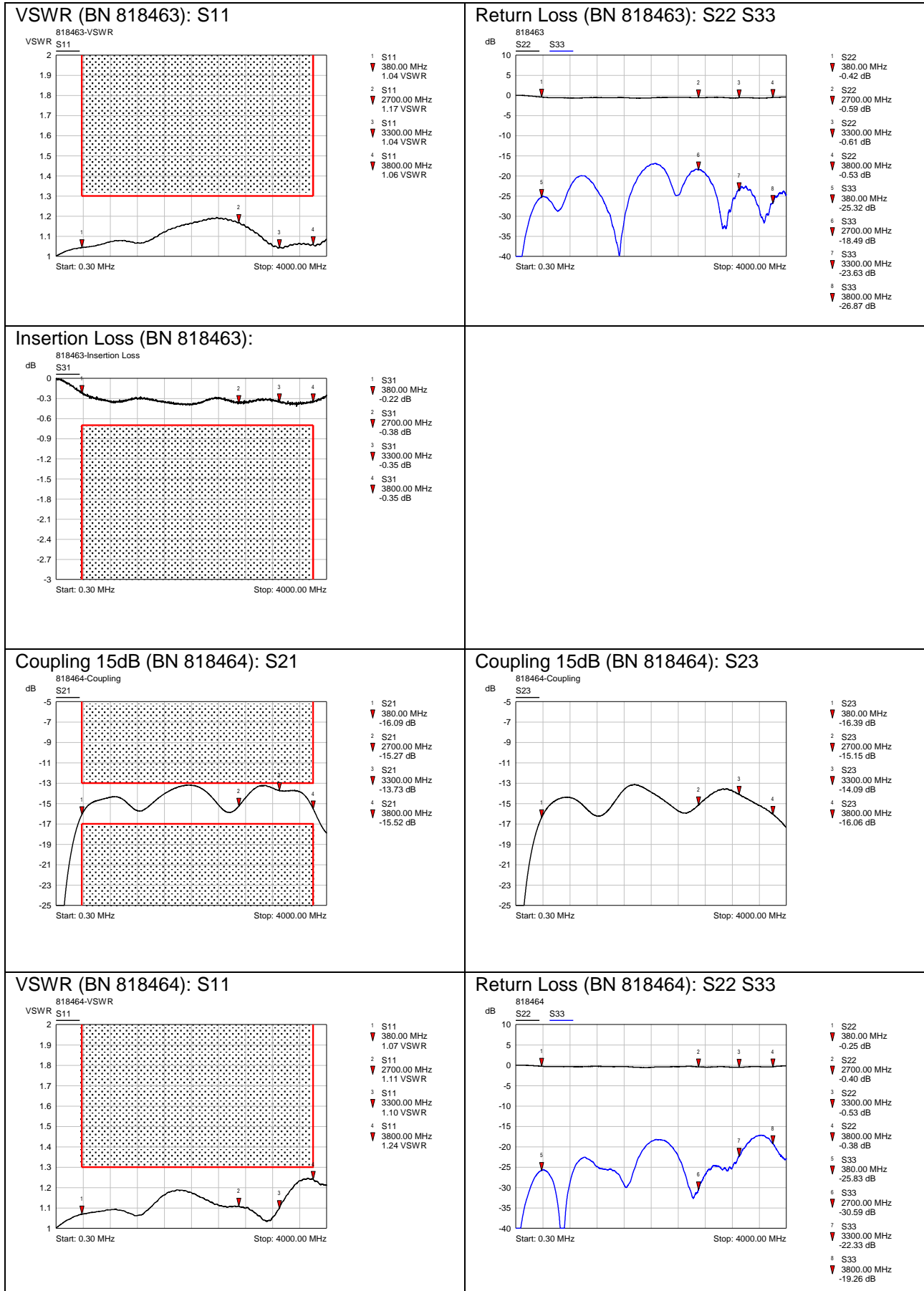
Template TD-00002Y



Asymmetric Splitters 4.8dB /6dB /7dB /8dB /10dB /13dB /15dB /20dB

This document is proprietary to us. All rights reserved. Any use, transfer, or reproduction of this document or the know-how contained therein requires our express consent.

Template TD-00002Y



Asymmetric Splitters 4.8dB /6dB /7dB /8dB /10dB /13dB /15dB /20dB

This document is proprietary to us. All rights reserved. Any use, transfer, or reproduction of this document or the know-how contained therein requires our express consent.

Template TD-00002Y

