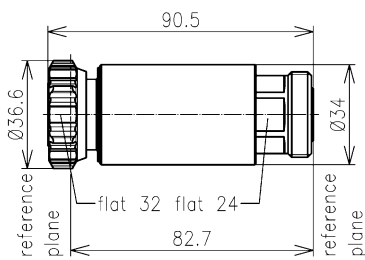
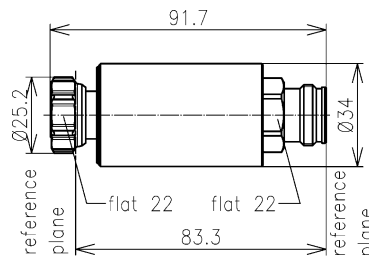


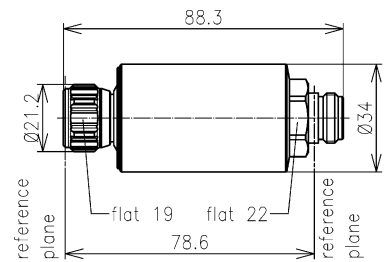
DC Block || BN 766438 BN 432067 BN 950721, BN 432067, BN 950721



BN 766438



BN 432067



BN 950721

all dimensions in millimeter

Radio frequency characteristics

Interface type	7-16 plug / socket (50 Ω) per IEC 61169-4	4.3-10 plug / socket (50 Ω) per IEC 61169-54	N plug / socket (50 Ω) per IEC 61169-16
Intermodulation (IM3) @ 2x 20W, max. / typ.	-160 dBc / -165 dBc	-160 dBc / -165 dBc	-155 dBc / -160 dBc
Version	Inner conductor separated		
Frequency range	80 to 3800 MHz		
Insertion loss, max. / typ.	0.25 dB / 0.10 dB @ 80 to 3800 MHz		
VSWR, max. / typ.	1.40 / 1.28 @ 80 to 100 MHz 1.30 / 1.22 @ 100 to 300 MHz 1.10 / 1.06 @ 300 to 1880 MHz 1.20 / 1.11 @ 1880 to 2700 MHz 1.25 / 1.19 @ 2700 to 3800 MHz		
RF CW power, max. (for VSWR=1.0 at sea level, ambiente temperature 40°C)	1500 W @ 80 MHz 300 W @ 1880 MHz 250 W @ 2700 MHz 130 W @ 3800 MHz		
Blocking DC voltage (for VSWR=1.0 at sea level, ambiente temperature 20°C)	3000 V		

Mechanical characteristics

Inner conductor material / surface finish	copper alloy / silver plated		
Outer conductor material / surface finish	copper alloy / silver plated		
Other metal parts / surface finish	copper alloy / nickel plated		
Insulation	PTFE, Polyimide		
Sealing	silicone rubber		
IP protection level	IP67 per EN 60529 (interface connected with appropriate gasket)		
Weight, approx.	270 g	225 g	200 g

Environmental conditions

Operating temperature range	-40 to +55 °C
-----------------------------	---------------

Scope of delivery	protective caps
-------------------	-----------------

SPINNER GmbH. This document is proprietary to us. All rights reserved. Any use, transfer, or reproduction of this document or the know-how contained therein requires our express consent.

Template TD-00003F