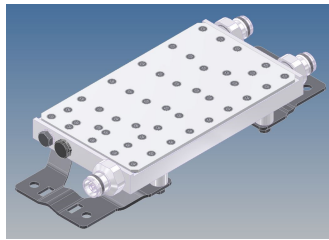
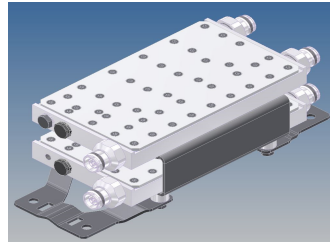


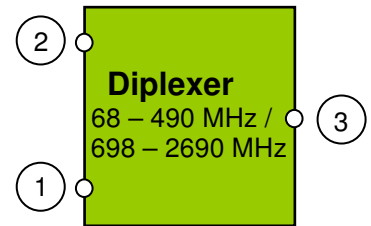
Multiband Diplexer



Single Unit



Double Unit

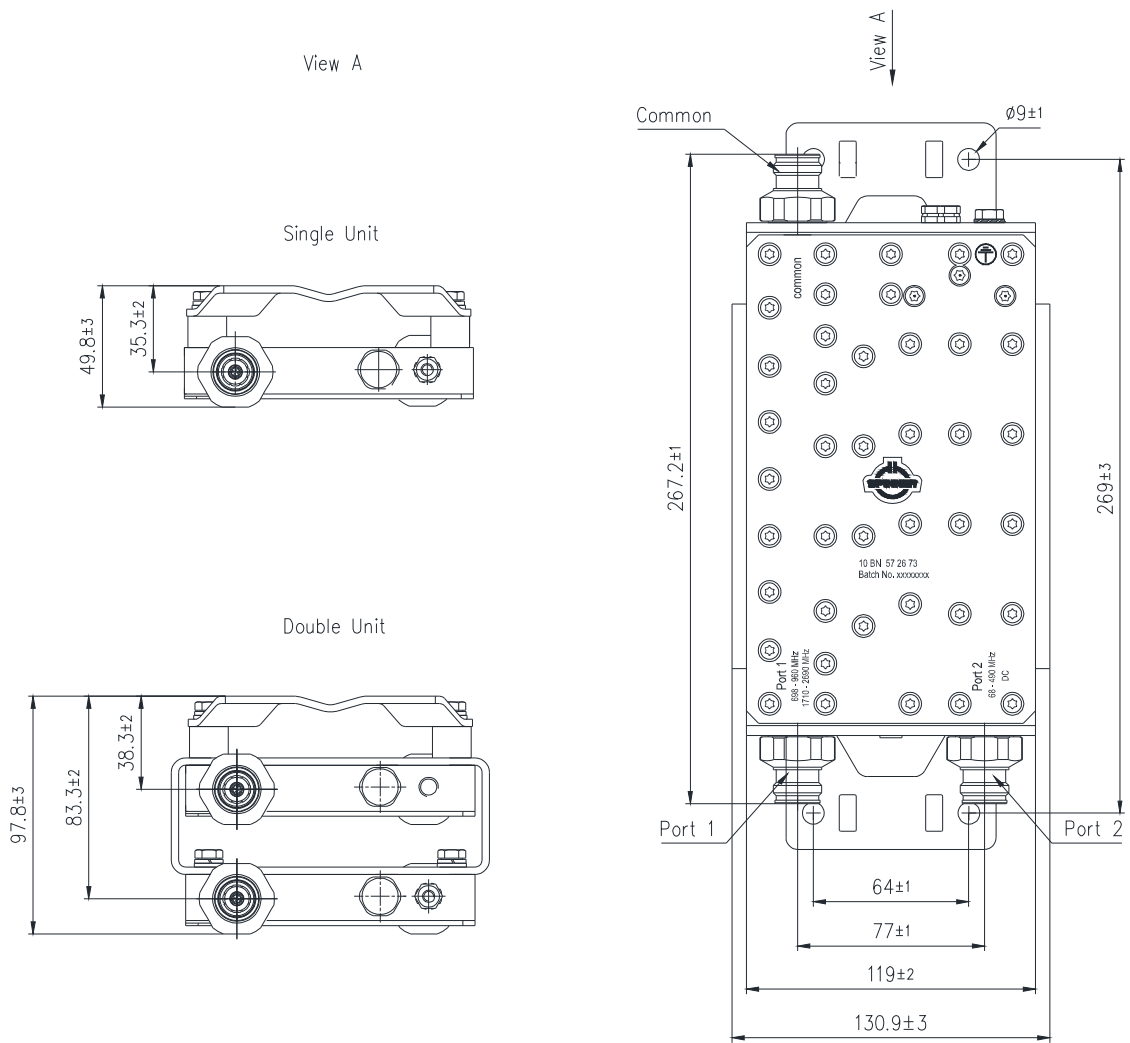


Block Diagram

Part number			BN 572670	BN 572671	BN 572672	BN 572673
Version			single	double	single	double
Connectors			4.3-10 socket (50 Ohms)			
Frequency range	Port 1	Range 1	698 – 800 MHz			
		Range 2	800 – 960 MHz			
		Range 3	1710 – 2500 MHz			
		Range 4	2500 – 2690 MHz			
	Port 2	Range 5	68 – 200 MHz			
		Range 6	200 – 380 MHz			
		Range 7	380 – 470 MHz			
		Range 8	470 – 490 MHz			
Insertion loss	Port 1 → Port 3	Range 1	≤ 0.3 dB			
		Range 2, 3 and 4	≤ 0.2 dB			
	Port 2 → Port 3	Range 5, 6 and 7	≤ 0.2 dB			
		Range 8	≤ 0.3 dB			
Isolation	Port 1 → Port 2	Range 1	≥ 30 dB			
		Range 2 and 3	≥ 50 dB			
		Range 4	≥ 40 dB			
	Port 2 → Port 1	Range 5, 6 and 7	≥ 30 dB			
		Range 8	≥ 25 dB			
VSWR	Port 1	Range 1	≤ 1.35			
		Range 2, 3 and 4	≤ 1.2 typical: ≤ 1.15			
	Port 2	Range 5, 7 and 8	≤ 1.2			
		Range 6	≤ 1.35			
Power rating	Port 1	500 W				
	Port 2	300 W				
DC by-pass			no DC		Port 2 (max. 1A per input max. 60V DC(AISG Standard, 2.0, § 6.4))	
IM – value 3rd order @ 2 x 20 W			≤ -155 dBc typical: ≤ -160 dBc			
Degree of protection: mated / 1bar, 1h, ≤18°C			IP 68			
Environmental conditions			ETSI EN 300019-1-1 Class 1.2 ETSI EN 300019-1-2 Class 2.3 ETSI EN 300019-1-4 Class 4.1E			
Weight			1.5 kg	3.6 kg	1.5 kg	3.6 kg

Wall / Mast mounting	part of delivery
Temperature range	-25 °C – +65 °C

Dimension:

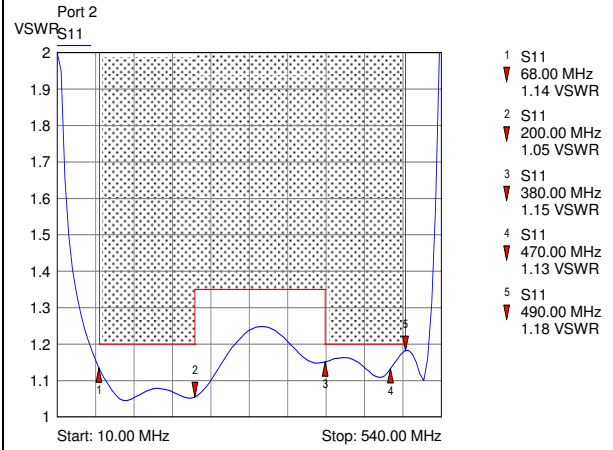
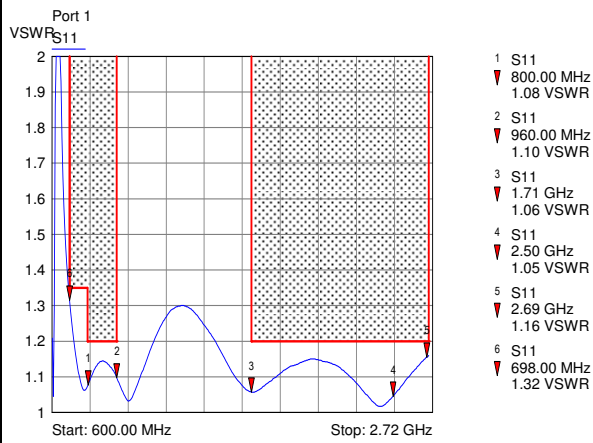


Standard:
4.3-10 female 50 (ohms): IEC 61169-54

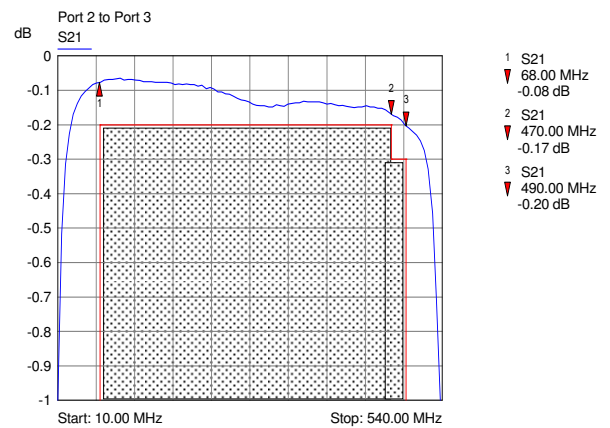
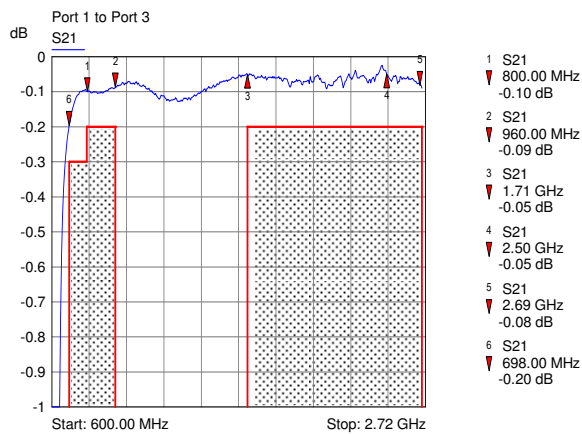
modifications reserved

Measurements:

VSWR:



Insertion loss:



Isolation:

