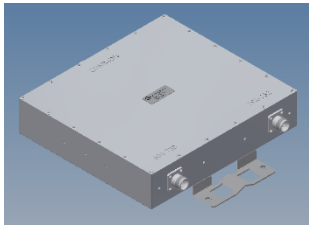
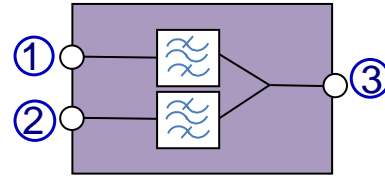


Diplexer LTE700 / LTE800



Picture not binding



block diagram

Electrical characteristics

Part number	BN 570724	
Frequency range	694 - 788 MHz	
Port 1	694 - 788 MHz	
Port 2	791 - 862 MHz	
Insertion loss	@ambient temperature (+25°C)	≤ 0.6 dB @ 694 – 785 MHz / ≤ 1.2 dB @ 785 – 788 MHz ≤ 1.2 dB @ 791 – 794 MHz / ≤ 0.6 dB @ 794 – 862 MHz
	@temperature range (-40°C to +55°C)	≤ 0.6 dB @ 694 – 785 MHz / ≤ 1.6 dB @ 785 – 788 MHz ≤ 1.6 dB @ 791 – 794 MHz / ≤ 0.6 dB @ 794 – 862 MHz
VSWR	≤ 1.25	
Isolation Port 1 ↔ Port 2	≥ 40 dB	
DC-by-pass	N/A	
Group delay	≤ -190 ns	
Group delay variation LTE	≤ -20 ns (in any 180kHz)	
Lightning protection	3 kA, 10/350 µs pulse	
Passive intermodulation (IM3), 3rd order @ 2 x 20W	≤ -155 dBc	
Impedance	50 Ohm	
Power Rating	200 W (CW) max. per input port	

Mechanical characteristics

Connectors	4.3-10 female
Dimensions, approx. (without connectors)	278 x 253 x 58 mm (Width x Height x Depth)
Weight, approx.	6 kg
Colour	Grey (RAL 7047)
Wall / Mast mounting	Part of delivery

Environmental conditions

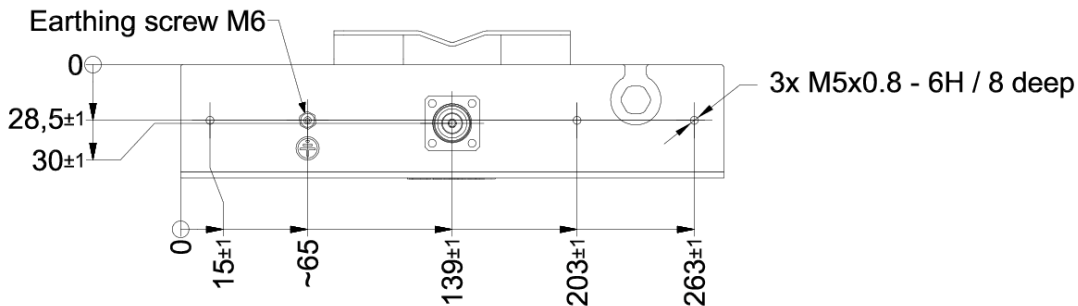
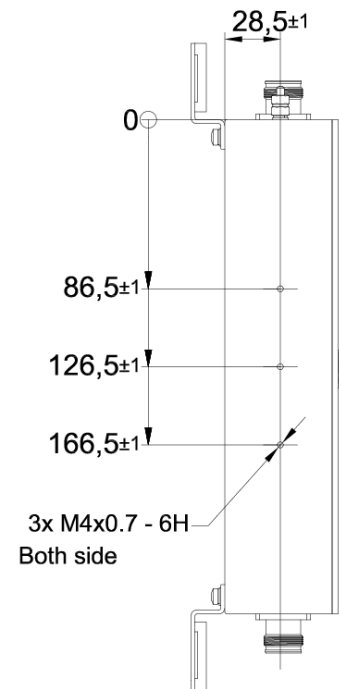
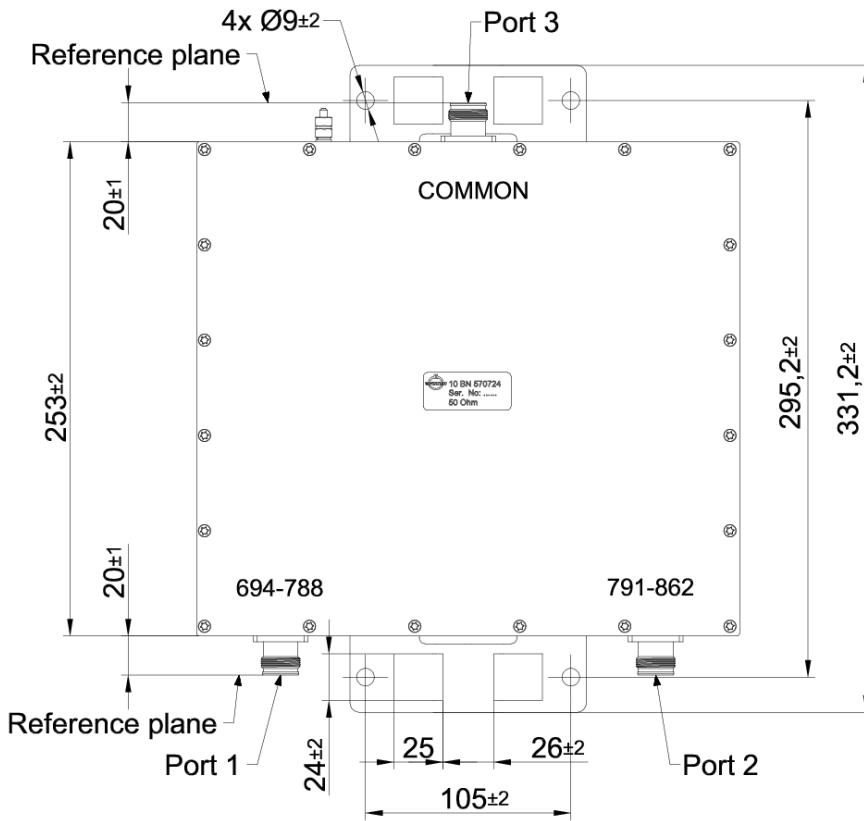
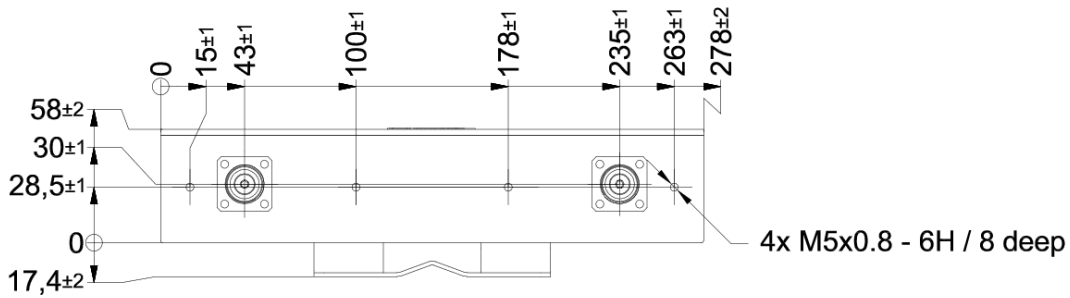
Class. of environmental conditions	ETSI EN 300019-1-1 Class 1.2 ETSI EN 300019-1-2 Class 2.3 ETSI EN 300019-1-4 Class 4.1E
Degree of protection	IP 65 (Outdoor)
Operation Ambient temperature range	-40 °C to +55 °C
Storage Ambient temperature range	-40 °C to +85 °C
Relative humidity, max.	95% (non-condensing)

SPINNER GmbH
 This document is proprietary to us.
 All rights reserved. Any use, transfer, or reproduction of this document
 or the know-how contained therein requires our express consent.

Template TD-00002Y

Diplexer LTE700 / LTE800

Outline (all dimensions in millimeter)



Standard:

4.3-10 female (50 ohms): IEC 61169-54

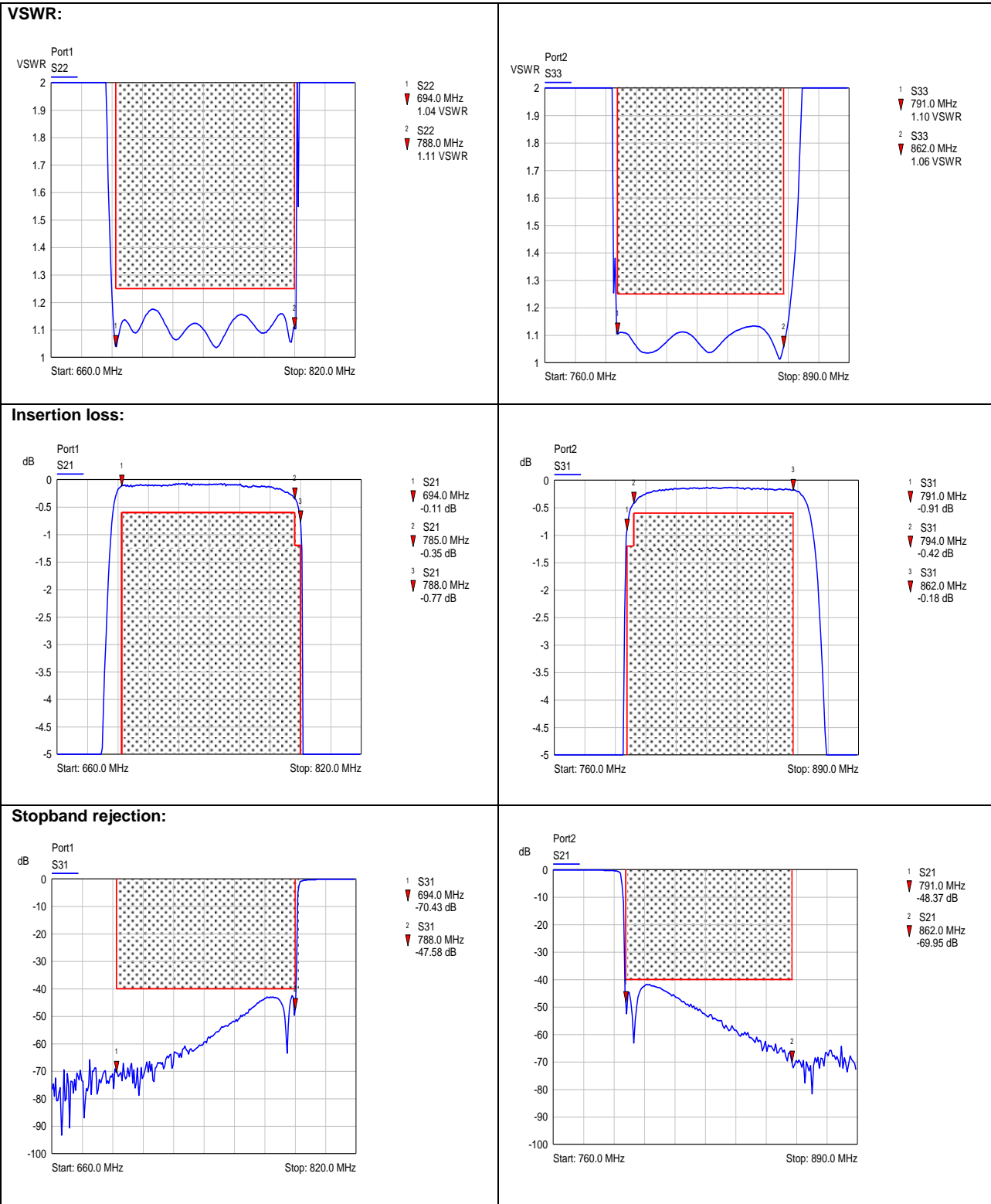
modifications reserved!

SPINNER GmbH
This document is proprietary to us.
All rights reserved. Any use, transfer, or reproduction of this document
or the know-how contained therein requires our express consent.

Template TD-00002Y

Diplexer LTE700 / LTE800

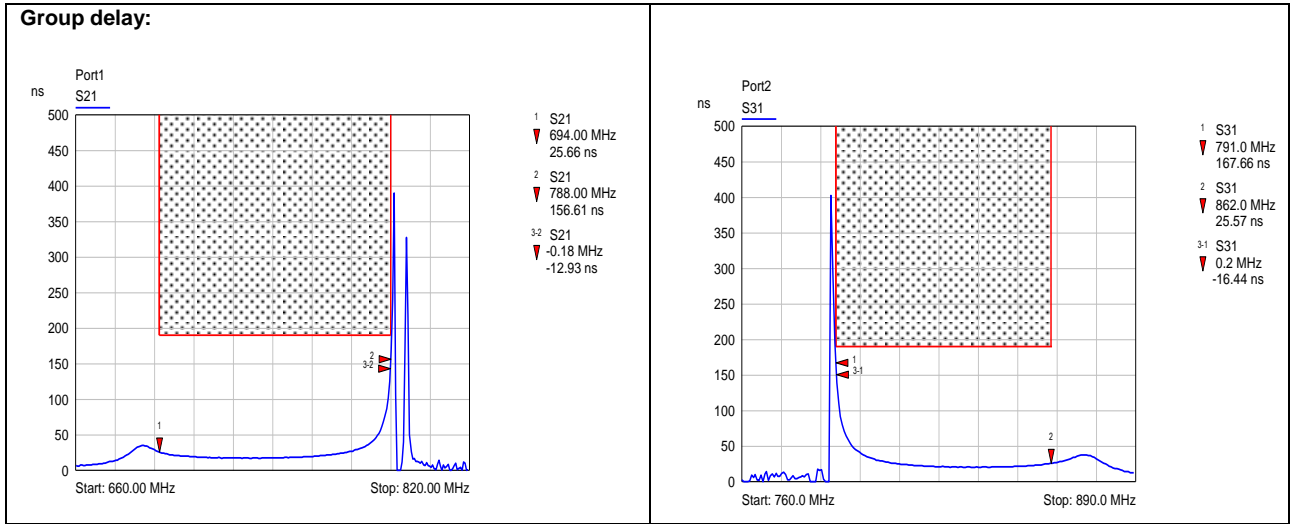
Measurements:



SPINNER GmbH
 This document is proprietary to us.
 All rights reserved. Any use, transfer, or reproduction of this document
 or the know-how contained therein requires our express consent.

Template TD-00002Y

Diplexer LTE700 / LTE800



SPINNER GmbH
 This document is proprietary to us.
 All rights reserved. Any use, transfer, or reproduction of this document
 or the know-how contained therein requires our express consent.

Template TD-00002Y