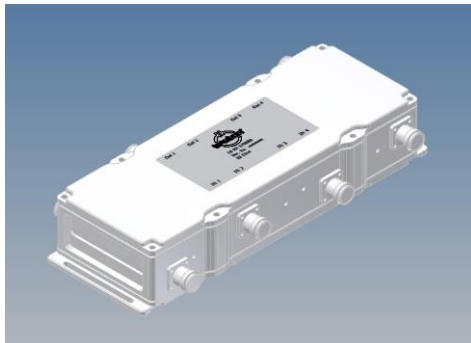
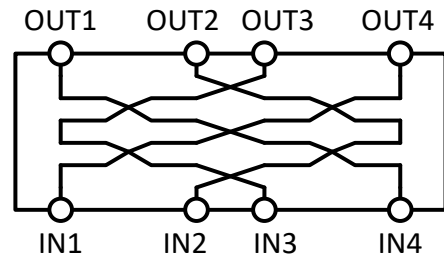


4-way Combiner 350-2700MHz



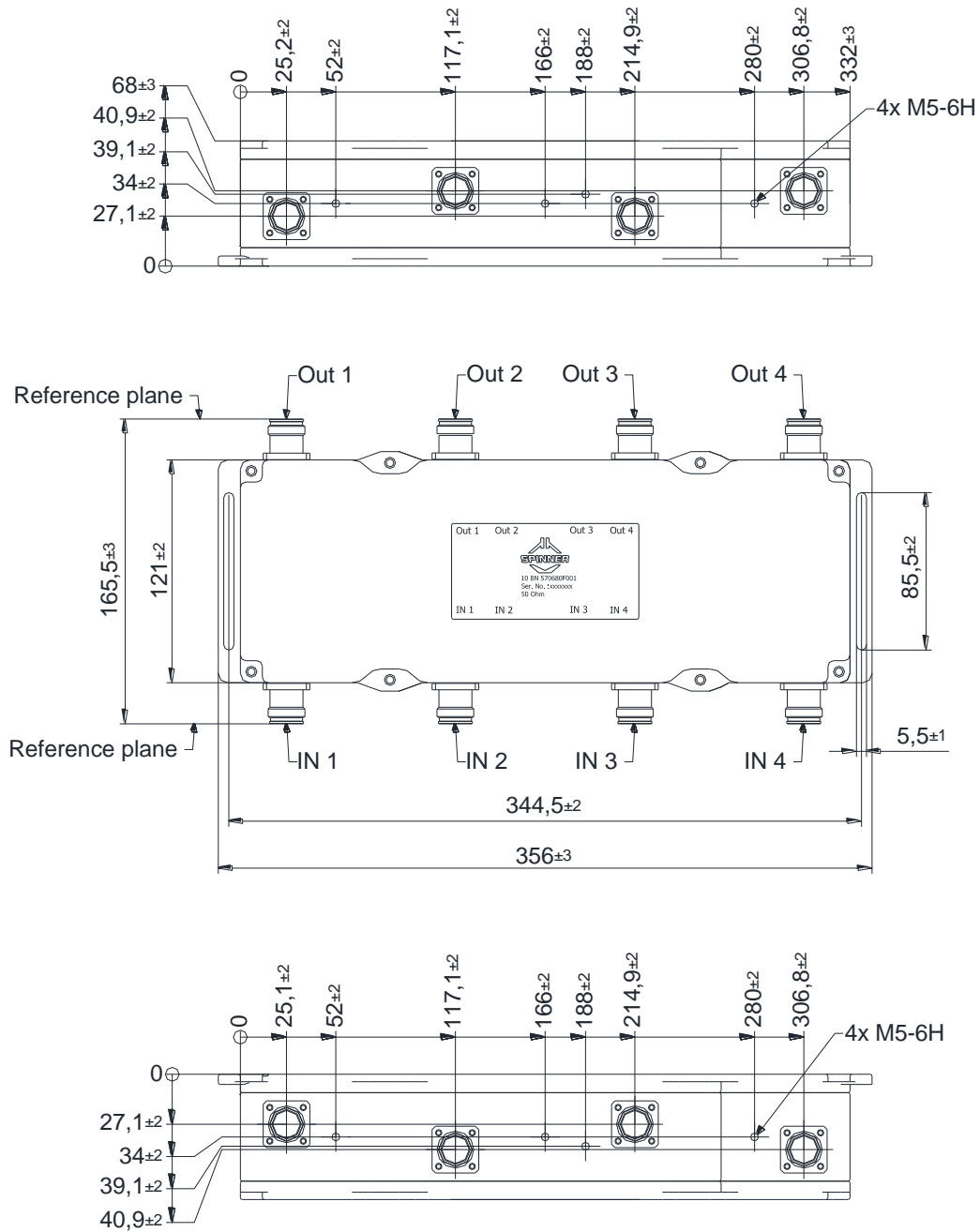
Not binding



Block diagram

Part number	BN 570680F001
Connectors	4.3-10 female (50 Ohms)
Frequency range	350 - 2700 MHz
Insertion loss (including nominal 6 dB splitting losses)	6.0 dB ± 1.5 dB
Isolation	
IN 1 <-> IN 2	≥ 30 dB (typ. 40 dB)
IN 3 <-> IN 4	≥ 30 dB (typ. 40 dB)
IN 2 <-> IN 3	≥ 25 dB (typ. 30 dB)
IN 1 <-> IN 4	≥ 25 dB (typ. 30 dB)
IN 1 <-> IN 3	≥ 23 dB
IN 2 <-> IN 4	≥ 23 dB
VSWR	≤ 1.25 (typ. 1.2)
Max. input power per port	400 W
IM-value 3rd order @ 2 x 20W	≤ -160 dBc (typ. -165dBc)
Test voltage	500 V
Special feature	DC path IN1 → OUT4, IN2 → OUT2 DC path IN3 → OUT3, IN4 → OUT1 (max. 6.5 A AISG 2.0 conform)
Degree of protection	IP 65 outdoor
Class. of environmental conditions	ETSI EN 300019-1-1 Class 1.2 ETSI EN 300019-1-2 Class 2.3 ETSI EN 300019-1-4 Class 4.1E
Wall / Mast mounting	included
Weight	3.6 Kg
Operating temperature	-25°C - +65°C

Dimensions:



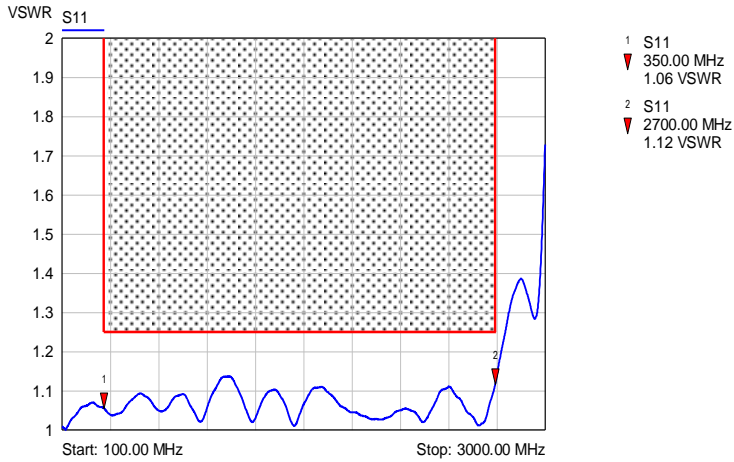
Standard:

4.3-10 female (50 ohms): IEC 61169-54;

modifications reserved

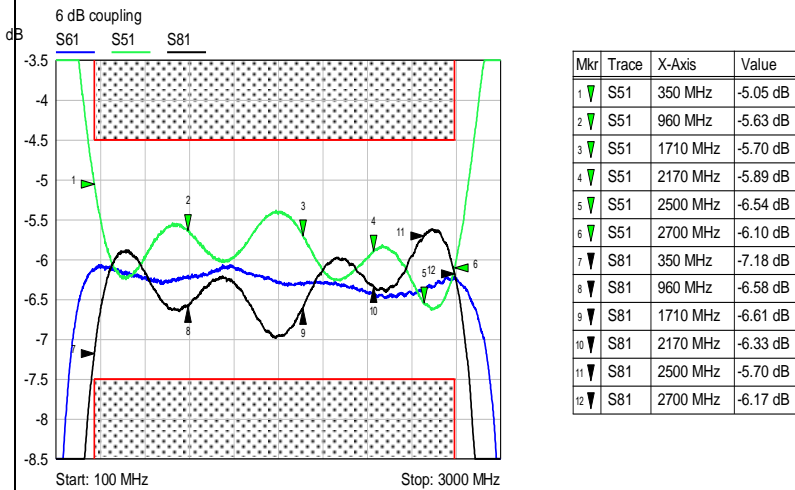
Measurement:

VSWR:



— typical for: IN1, IN2, IN3, IN4

Insertion loss:

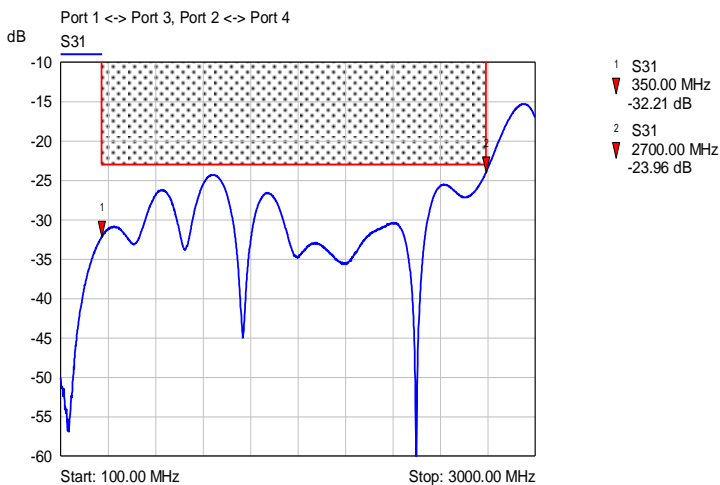


— typical for: IN1->OUT4, IN2->OUT2, IN3->OUT3, IN4->OUT1,

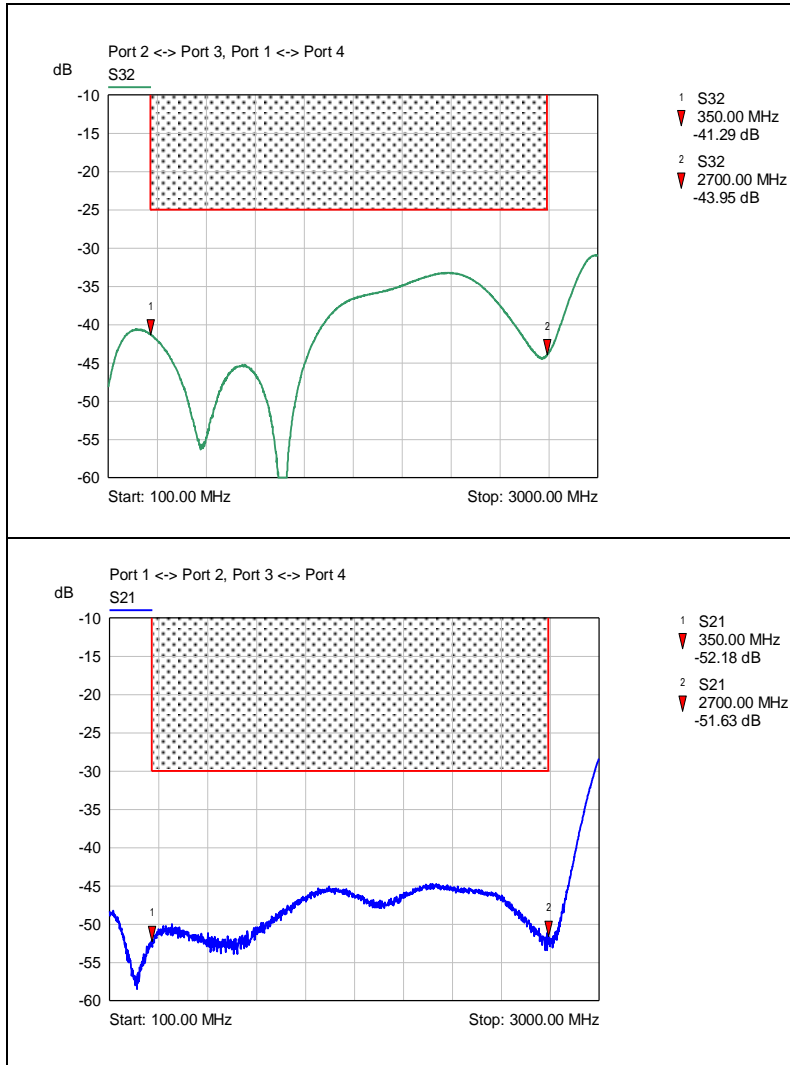
— typical for: IN1->OUT1, IN2->OUT3, IN3->OUT2, IN4->OUT4,

— typical for: IN1->OUT2, IN1->OUT3, IN2->OUT1, IN2->OUT4, IN3->OUT1, IN3->OUT4, IN4->OUT2, IN4->OUT3,

Isolation:



— typical for: IN1<->IN3, IN2<->IN4



— typical for: IN2<->IN3, IN1<->IN4

— typical for: IN1<->IN2, IN3<->IN4